

PRK2 Mouse mAb

CatalogNo: YM0534

Key Features

Host Species

- Mouse

Reactivity

- Human, Mouse, Rat, Monkey

Applications

- WB, IHC, IF, Flow Cyt, ELISA

MW

- 112kD (Calculated)

Recommended Dilution Ratios

WB 1:500-1:2000

IHC 1:200-1:1000

Flow Cyt 1:200-1:400

ELISA 1:10000

IF 1:50-200

Storage

Storage*

-15°C to -25°C/1 year (Do not lower than -25°C)

Formulation

Liquid in PBS containing 50% glycerol, 0.5% BSA and 0.02% sodium azide.

Basic Information

Clonality

Monoclonal

Immunogen Information

Immunogen

Purified recombinant fragment of human PRK2 expressed in E. Coli.

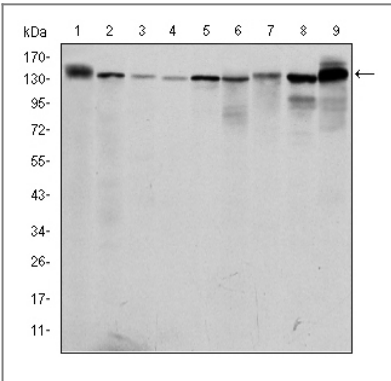
Specificity

PRK2 Monoclonal Antibody detects endogenous levels of PRK2 protein.

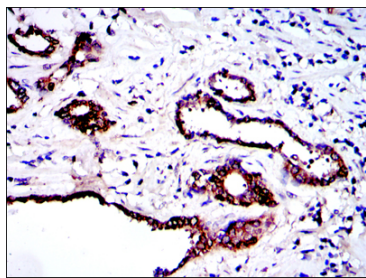
Target Information

Gene name	PKN2		
Protein Name	Serine/threonine-protein kinase N2		
	Organism	Gene ID	UniProt ID
	Human	5586 ;	Q16513 ;
	Mouse	109333 ;	Q8BWW9 ;
	Rat		O08874 ;
Cellular Localization	Cytoplasm . Nucleus . Membrane . Cell projection, lamellipodium . Cytoplasm, cytoskeleton . Cleavage furrow . Midbody . Cell junction . Colocalizes with PTPN13 in lamellipodia-like structures, regions of large actin turnover. Accumulates during telophase at the cleavage furrow and concentrates finally around the midbody in cytokinesis. Recruited to nascent cell-cell contacts at the apical surface of cells. In the course of viral infection, colocalizes with HCV NS5B at perinuclear region in the cytoplasm. .		
Tissue specificity	Ubiquitous. Expressed in numerous tumor cell lines, especially in bladder tumor cells.		
Function	Catalytic activity:ATP + a protein = ADP + a phosphoprotein.,Domain:The C1 domain does not bind the diacylglycerol (DAG).,enzyme regulation:Activated by lipids, particularly cardiolipin and to a lesser extent by other acidic phospholipids and unsaturated fatty acids. Two specific sites, Thr-816 (activation loop of the kinase domain) and Thr-958 (turn motif), need to be phosphorylated for its full activation.,Function:Exhibits a preference for highly basic protein substrates.,PTM:Activated by limited proteolysis with trypsin.,PTM:Autophosphorylated.,similarity:Belongs to the protein kinase superfamily.,similarity:Belongs to the protein kinase superfamily. AGC Ser/Thr protein kinase family. PKC subfamily.,similarity:Contains 1 AGC-kinase C-terminal domain.,similarity:Contains 1 C2 domain.,similarity:Contains 1 protein kinase domain.,similarity:Contains 3 REM (Hr1) repeats.,		

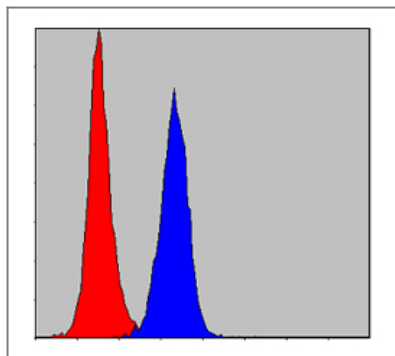
Validation Data



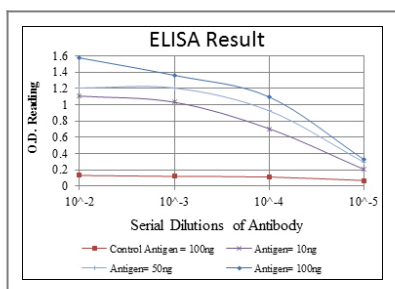
Western Blot analysis using PRK2 Monoclonal Antibody against PC-12 (1), Cos7 (2), K562 (3), Jurkat (4), HeLa (5), A431 (6), C6 (7), NIH/3T3 (8) and HEK293 (9) cell lysate.



Immunohistochemistry analysis of paraffin-embedded prostate tissues with DAB staining using PRK2 Monoclonal Antibody.



Flow cytometric analysis of NIH/3T3 cells using PRK2 Monoclonal Antibody (blue) and negative control (red).



Contact information

Orders: order@immunoway.com
 Support: tech@immunoway.com
 Telephone: 877-594-3616 (Toll Free), 408-747-0185
 Website: <http://www.immunoway.com>
 Address: 2200 Ringwood Ave San Jose, CA 95131 USA



Please scan the QR code to access additional product information:
PRK2 Mouse mAb

For Research Use Only. Not for Use in Diagnostic Procedures.

[Antibody](#) | [ELISA Kits](#) | [Protein](#) | [Reagents](#)