

## MAPKAPK5 Mouse mAb

CatalogNo: YM0533

### | Key Features

#### Host Species

- Mouse

#### Reactivity

- Human

#### Applications

- WB,IHC,IF,ELISA

#### MW

- 54kD (Calculated)

### | Recommended Dilution Ratios

**WB 1:500-1:2000**

**IHC 1:200-1:1000**

**ELISA 1:10000**

**IF 1:50-200**

### | Storage

#### Storage\*

-15°C to -25°C/1 year(Do not lower than -25°C)

#### Formulation

Liquid in PBS containing 50% glycerol, 0.5% BSA and 0.02% sodium azide.

### | Basic Information

#### Clonality

Monoclonal

### | Immunogen Information

#### Immunogen

Purified recombinant fragment of PRAK expressed in E. Coli.

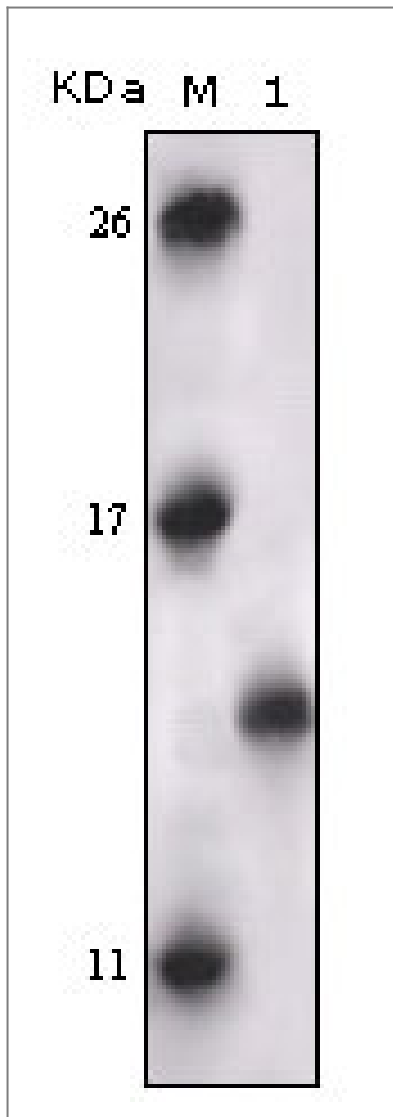
#### Specificity

PRAK Monoclonal Antibody detects endogenous levels of PRAK protein.

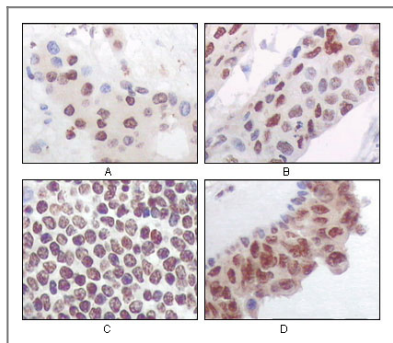
### | Target Information

Gene name	MAPKAPK5		
Protein Name	MAP kinase-activated protein kinase 5		
	Organism	Gene ID	UniProt ID
	Human	<a href="#">8550</a> ;	<a href="#">Q8IW41</a> ;
Cellular Localization	Cytoplasm. Nucleus. Translocates to the cytoplasm following phosphorylation and activation. Interaction with ERK3/MAPK6 or ERK4/MAPK4 and phosphorylation at Thr-182, activates the protein kinase activity, followed by translocation to the cytoplasm. Phosphorylation by PKA/PRKACA at Ser-115 also induces nuclear export.		
Tissue specificity	Expressed ubiquitously.		
Function	Catalytic activity:ATP + a protein = ADP + a phosphoprotein.,enzyme regulation:p38 alpha and beta-dependent phosphorylation increases its activity. Activated by stress-related extracellular stimuli; such as H(2)O(2), arsenite, anisomycin TNF alpha and also PMA and the calcium ionophore A23187; but to a lesser extent. In vitro, activated by SQSTM1.,Function:Mediates stress-induced small heat shock protein 27 phosphorylation.,PTM:Phosphorylated on Thr-182; which is the regulatory phosphorylation site and is located on the T-loop/loop 12.,similarity:Belongs to the protein kinase superfamily. CAMK Ser/Thr protein kinase family.,similarity:Contains 1 protein kinase domain.,subcellular location:Also observed in the nucleus.,subunit:Interacts with SQSTM1.,tissue specificity:Expressed ubiquitously.,		

## | Validation Data



Western Blot analysis using PRAK Monoclonal Antibody against truncated PRAK recombinant protein.



Immunohistochemistry analysis of paraffin-embedded human liver carcinoma (A), esophagus carcinoma (B), normal spleen tissue (C), breast carcinoma (D), showing nuclear and cytoplasmic localization with DAB staining using PRAK Monoclonal Antibody.

## Contact information

Orders: [order@immunoway.com](mailto:order@immunoway.com)  
 Support: [tech@immunoway.com](mailto:tech@immunoway.com)  
 Telephone: 877-594-3616 (Toll Free), 408-747-0185  
 Website: <http://www.immunoway.com>  
 Address: 2200 Ringwood Ave San Jose, CA 95131 USA



Please scan the QR code to access additional product information:  
**MAPKAPK5 Mouse mAb**

