

## PR3 Mouse mAb

CatalogNo: YM0532

### Key Features

#### Host Species

- Mouse

#### Reactivity

- Human

#### Applications

- WB,ELISA

#### MW

- 28kD (Calculated)

### Recommended Dilution Ratios

**WB 1:500-1:2000**

**ELISA 1:10000**

**Not yet tested in other applications.**

### Storage

**Storage\*** -15°C to -25°C/1 year(Do not lower than -25°C)

**Formulation** Liquid in PBS containing 50% glycerol, 0.5% BSA and 0.02% sodium azide.

### Basic Information

**Clonality** Monoclonal

### Immunogen Information

**Immunogen** Purified recombinant fragment of human PR3 expressed in E. Coli.

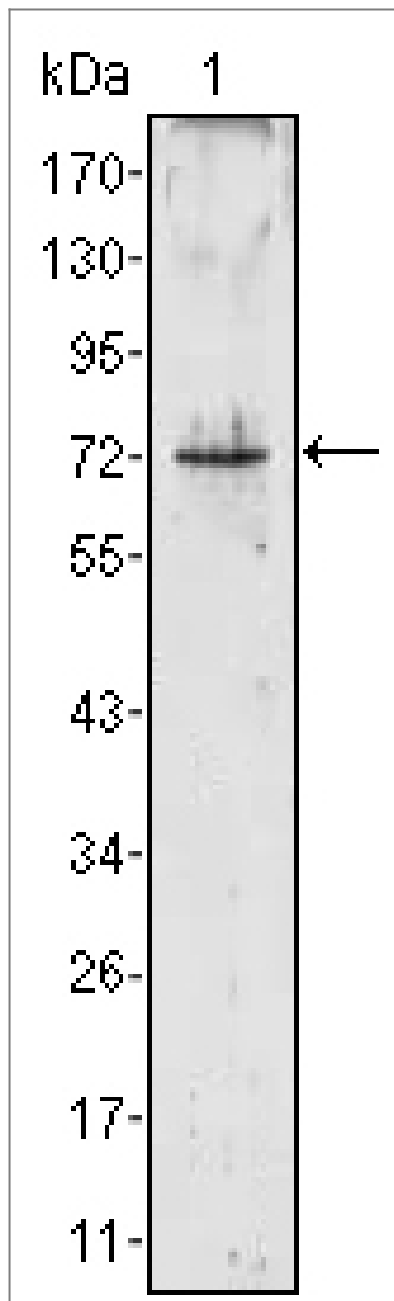
**Specificity** PR3 Monoclonal Antibody detects endogenous levels of PR3 protein.

### Target Information

**Gene name** PRTN3

Protein Name	Myeloblastin		
	Organism	Gene ID	UniProt ID
	Human	<a href="#">5657</a> ;	<a href="#">P24158</a> ;
	Mouse		<a href="#">Q61096</a> ;
Cellular Localization	Cytoplasmic granule . Secreted . Cell membrane ; Peripheral membrane protein ; Extracellular side . Membrane raft ; Peripheral membrane protein ; Extracellular side . Localizes predominantly to azurophil granules (primary secretory granules) in neutrophils (PubMed:2033050, PubMed:3198760, PubMed:7897245, PubMed:18462208). Secreted upon neutrophil stimulation by TNF-alpha, lipopolysaccharide (LPS), fMLP and CXCL8/IL8 or during neutrophil transmigration (PubMed:22266279, PubMed:28240246). Following secretion tethered to the cell membrane by CD177 (PubMed:18462208, PubMed:22266279). .		
Tissue specificity	Expressed in polymorphonuclear leukocytes (at protein level) (PubMed:2033050, PubMed:7897245, PubMed:3198760). Expressed in neutrophils (at protein level) (PubMed:28240246, PubMed:18462208, PubMed:21193407, PubMed:22266279, PubMed:17244676). Expressed in differentiating neutrophils (PubMed:18462208).		
Function	Catalytic activity:Hydrolysis of proteins, including elastin, by preferential cleavage: -Ala- -Xaa- > -Val- -Xaa-.,Function:Polymorphonuclear leukocyte serine protease that degrades elastin, fibronectin, laminin, vitronectin, and collagen types I, III, and IV (in vitro) and causes emphysema when administered by tracheal insufflation to hamsters.,online information:Proteinase 3 entry,similarity:Belongs to the peptidase S1 family. Elastase subfamily.,similarity:Contains 1 peptidase S1 domain.,		

## | Validation Data



Western Blot analysis using PR3 Monoclonal Antibody against PRTN3 (aa28-256)-hIgGfc transfected HEK293 cell lysate (1).

## Contact information

Orders: [order@immunoway.com](mailto:order@immunoway.com)  
Support: [tech@immunoway.com](mailto:tech@immunoway.com)  
Telephone: 877-594-3616 (Toll Free), 408-747-0185  
Website: <http://www.immunoway.com>  
Address: 2200 Ringwood Ave San Jose, CA 95131 USA



Please scan the QR code to access additional product information:  
**PR3 Mouse mAb**