

Pinch-1 Mouse mAb

CatalogNo: YM0520

Key Features

Host Species

- Mouse

Reactivity

- Human

Applications

- WB,IF,FC,ELISA

MW

- 37kD (Calculated)

Recommended Dilution Ratios

WB 1:500-1:2000

IF 1:200-1:1000

Flow Cyt 1:200-1:400

ELISA 1:10000

Not yet tested in other applications.

Storage

Storage*

-15°C to -25°C/1 year(Do not lower than -25°C)

Formulation

Liquid in PBS containing 50% glycerol, 0.5% BSA and 0.02% sodium azide.

Basic Information

Clonality

Monoclonal

Immunogen Information

Immunogen

Purified recombinant fragment of human Pinch-1 expressed in E. Coli.

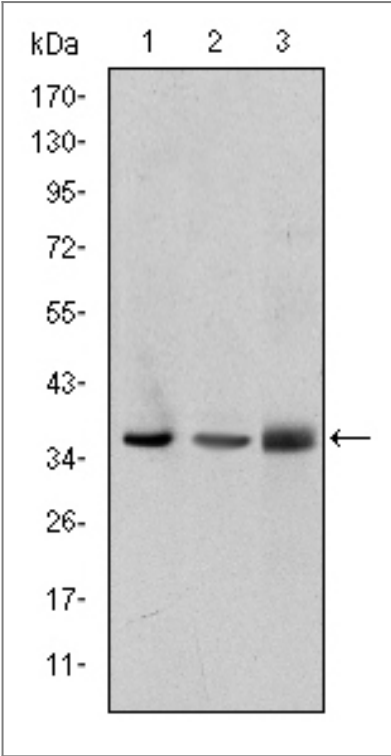
Specificity

Pinch-1 Monoclonal Antibody detects endogenous levels of Pinch-1 protein.

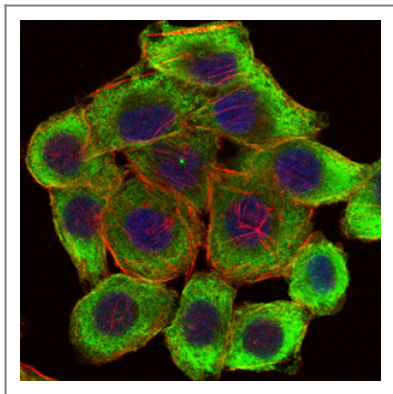
Target Information

Gene name	LIMS1		
Protein Name	LIM and senescent cell antigen-like-containing domain protein 1		
	Organism	Gene ID	UniProt ID
	Human	3987 ;	P48059 ;
	Mouse		Q99JW4 ;
Cellular Localization	Cell junction, focal adhesion. Cell membrane; Peripheral membrane protein; Cytoplasmic side.		
Tissue specificity	Expressed in most tissues except in the brain.		
Function	Function:Effector of integrin and growth factor signaling, coupling surface receptors to downstream signaling molecules involved in the regulation of cell survival, cell proliferation and cell differentiation. Focal adhesion protein part of the complex ILK-PINCH. This complex is considered to be one of the convergence points of integrin- and growth factor-signaling pathway.,similarity:Contains 5 LIM zinc-binding domains.,subunit:Interacts (via LIM zinc-binding 5) with TGFB111 (By similarity). Interacts (via LIM zinc-binding 1) with ILK. Interacts with SH3/SH2 adapter NCK2.,tissue specificity:In most tissues, except in the brain.,		

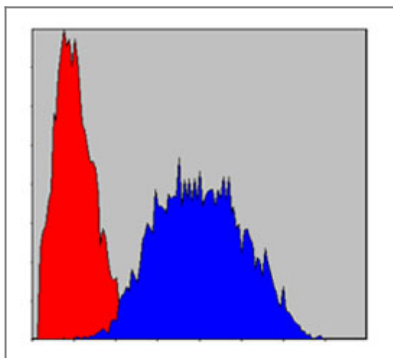
Validation Data



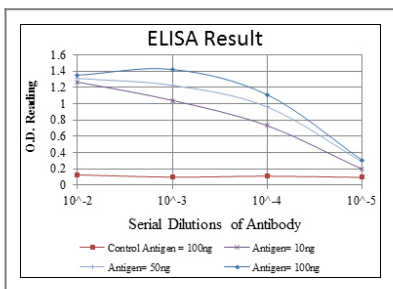
Western Blot analysis using Pinch-1 Monoclonal Antibody against A549 (1), Jurkat (2), and HeLa (3) cell lysate.



Immunofluorescence analysis of HepG2 cells using Pinch-1 Monoclonal Antibody (green). Blue: DRAQ5 fluorescent DNA dye. Red: Actin filaments have been labeled with Alexa Fluor-555 phalloidin.



Flow cytometric analysis of Hela cells using Pinch-1 Monoclonal Antibody (blue) and negative control (red).



Contact information

Orders: order@immunoway.com
 Support: tech@immunoway.com
 Telephone: 877-594-3616 (Toll Free), 408-747-0185
 Website: <http://www.immunoway.com>
 Address: 2200 Ringwood Ave San Jose, CA 95131 USA



Please scan the QR code to access additional product information:
Pinch-1 Mouse mAb

For Research Use Only. Not for Use in Diagnostic Procedures.

[Antibody](#) | [ELISA Kits](#) | [Protein](#) | [Reagents](#)