

## p38 $\beta$ Mouse mAb

CatalogNo: YM0498

### | Key Features

#### Host Species

- Mouse

#### Reactivity

- Human

#### Applications

- WB,ELISA

#### MW

- 41kD (Calculated)

### | Recommended Dilution Ratios

**WB 1:500-1:2000**

**ELISA 1:10000**

**Not yet tested in other applications.**

### | Storage

**Storage\*** -15°C to -25°C/1 year(Do not lower than -25°C)

**Formulation** Liquid in PBS containing 50% glycerol, 0.5% BSA and 0.02% sodium azide.

### | Basic Information

**Clonality** Monoclonal

### | Immunogen Information

**Immunogen** Purified recombinant fragment of p38 $\beta$  (aa251-363) expressed in E. Coli.

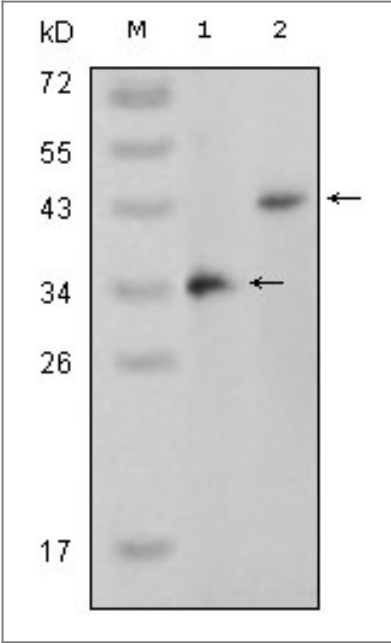
**Specificity** p38 $\beta$  Monoclonal Antibody detects endogenous levels of p38 $\beta$  protein.

### | Target Information

**Gene name** MAPK11

<b>Protein Name</b>	Mitogen-activated protein kinase 11		
	<b>Organism</b>	<b>Gene ID</b>	<b>UniProt ID</b>
	Human	<a href="#">5600;</a>	<a href="#">Q15759;</a>
	Mouse		<a href="#">Q9WUI1;</a>
<b>Cellular Localization</b>	Cytoplasm . Nucleus .		
<b>Tissue specificity</b>	Highest levels in the brain and heart. Also expressed in the placenta, lung, liver, skeletal muscle, kidney and pancreas.		
<b>Function</b>	Catalytic activity:ATP + a protein = ADP + a phosphoprotein.,cofactor:Magnesium.,Domain:The TXY motif contains the threonine and tyrosine residues whose phosphorylation activates the MAP kinases.,enzyme regulation:Activated by phosphorylation on threonine and tyrosine by MKK6. Inhibited by pyridinyl-imidazole related compounds.,Function:Kinase involved in a signal transduction pathway that is activated by changes in the osmolarity of the extracellular environment, by cytokines, or by environmental stress. Phosphorylates preferentially transcription factor ATF2.,PTM:Dually phosphorylated on Thr-180 and Tyr-182, which activates the enzyme.,similarity:Belongs to the protein kinase superfamily. CMGC Ser/Thr protein kinase family. MAP kinase subfamily.,similarity:Contains 1 protein kinase domain.,tissue specificity:Highest levels in the brain and heart. Also expressed in the placenta, lung, liver, skeletal muscle, kidney and pancreas.,		

| Validation Data



Western Blot analysis using p38β Monoclonal Antibody against truncated p38β recombinant protein (1) and full-length p38β (aa1-363)-pcDNA3.1 transfected CHO-K1 cell lysate (2).

| Contact information

Orders: [order@immunoway.com](mailto:order@immunoway.com)  
Support: [tech@immunoway.com](mailto:tech@immunoway.com)  
Telephone: 877-594-3616 (Toll Free), 408-747-0185  
Website: <http://www.immunoway.com>  
Address: 2200 Ringwood Ave San Jose, CA 95131 USA



Please scan the QR code  
to access additional  
product information:  
**p38 $\beta$  Mouse mAb**

---

For Research Use Only. Not for Use in Diagnostic Procedures.

[Antibody](#) | [ELISA Kits](#) | [Protein](#) | [Reagents](#)