

## NPT1 Mouse mAb

CatalogNo: YM0481

### | Key Features

#### Host Species

- Mouse

#### Reactivity

- Human

#### Applications

- WB,ELISA

#### MW

- 51kD (Calculated)

### | Recommended Dilution Ratios

**WB 1:500-1:2000**

**ELISA 1:10000**

**Not yet tested in other applications.**

### | Storage

**Storage\*** -15°C to -25°C/1 year(Do not lower than -25°C)

**Formulation** Liquid in PBS containing 50% glycerol, 0.5% BSA and 0.02% sodium azide.

### | Basic Information

**Clonality** Monoclonal

### | Immunogen Information

**Immunogen** Purified recombinant fragment of NPT1 expressed in E. Coli.

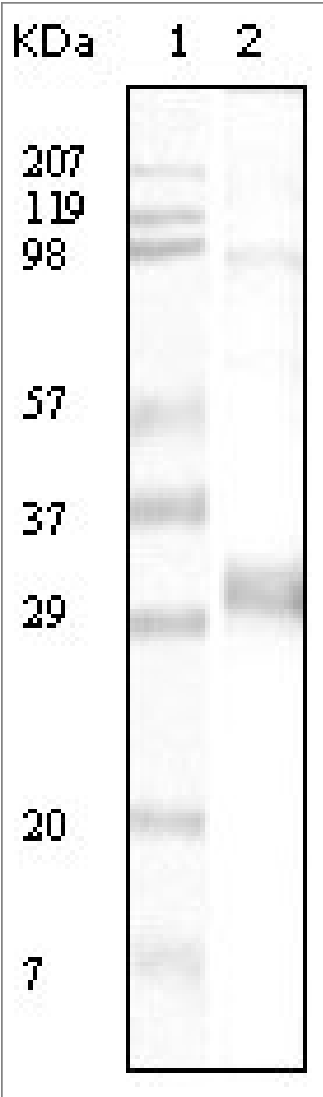
**Specificity** NPT1 Monoclonal Antibody detects endogenous levels of NPT1 protein.

### | Target Information

**Gene name** SLC17A1

Protein Name	Sodium-dependent phosphate transport protein 1		
	Organism	Gene ID	UniProt ID
	Human	<a href="#">6568</a> ;	<a href="#">Q14916</a> ;
	Mouse		<a href="#">Q61983</a> ;
Cellular Localization	Apical cell membrane ; Multi-pass membrane protein .		
Tissue specificity	Expressed in kidney cortex, liver and brain but not in other tissues.		
Function	Caution:It is uncertain whether Met-1 or Met-3 is the initiator.,Function:Important for the resorption of phosphate by the kidney. May be involved in actively transporting phosphate into cells via Na(+) cotransport in the renal brush border membrane.,similarity:Belongs to the major facilitator superfamily. Sodium/anion cotransporter family.,subunit:Interacts with PDZK1.,tissue specificity:Expressed in kidney cortex, liver and brain but not in other tissues.,		

| Validation Data



Western Blot analysis using NPT1 Monoclonal Antibody against truncated NPT1 recombinant protein.

## | Contact information

Orders: order@immunoway.com  
Support: tech@immunoway.com  
Telephone: 877-594-3616 (Toll Free), 408-747-0185  
Website: <http://www.immunoway.com>  
Address: 2200 Ringwood Ave San Jose, CA 95131 USA



Please scan the QR code  
to access additional  
product information:  
**NPT1 Mouse mAb**

---

For Research Use Only. Not for Use in Diagnostic Procedures.

[Antibody](#) | [ELISA Kits](#) | [Protein](#) | [Reagents](#)