

## MEK-6 Mouse mAb

CatalogNo: YM0438

### Key Features

#### Host Species

- Mouse

#### Reactivity

- Human, Mouse

#### Applications

- WB, IF, FC, ELISA

#### MW

- 37kD (Calculated)

### Recommended Dilution Ratios

**WB 1:500-1:2000**

**IF 1:200-1:1000**

**Flow Cyt 1:200-1:400**

**ELISA 1:10000**

**Not yet tested in other applications.**

### Storage

#### Storage\*

-15°C to -25°C/1 year (Do not lower than -25°C)

#### Formulation

Liquid in PBS containing 50% glycerol, 0.5% BSA and 0.02% sodium azide.

### Basic Information

#### Clonality

Monoclonal

### Immunogen Information

#### Immunogen

Purified recombinant fragment of human MEK-6 expressed in E. Coli.

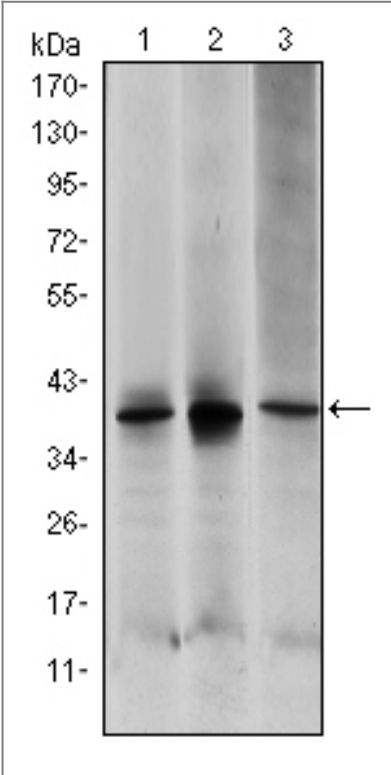
#### Specificity

MEK-6 Monoclonal Antibody detects endogenous levels of MEK-6 protein.

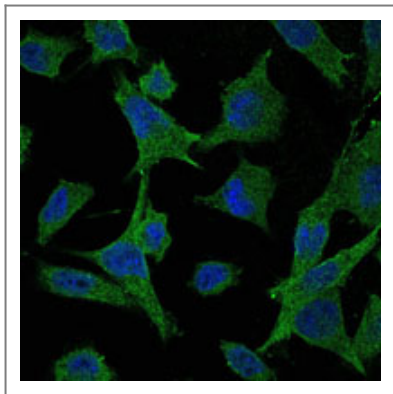
### Target Information

Gene name	MAP2K6		
Protein Name	Dual specificity mitogen-activated protein kinase kinase 6		
	Organism	Gene ID	UniProt ID
	Human	<a href="#">5608</a> ;	<a href="#">P52564</a> ;
	Mouse	<a href="#">26399</a> ;	<a href="#">P70236</a> ;
Cellular Localization	Nucleus . Cytoplasm . Cytoplasm, cytoskeleton . Binds to microtubules.		
Tissue specificity	Isoform 2 is only expressed in skeletal muscle. Isoform 1 is expressed in skeletal muscle, heart, and in lesser extent in liver or pancreas.		
Function	Catalytic activity:ATP + a protein = ADP + a phosphoprotein.,enzyme regulation:Probably activated by dual phosphorylation on Ser-207 and Thr-211.,Function:Catalyzes the concomitant phosphorylation of a threonine and a tyrosine residue in MAP kinase p38 exclusively.,induction:Strongly activated by UV, anisomycin, and osmotic shock but not by phorbol esters, NGF or EGF.,PTM:Acetylation of Ser-207 and Thr-211 by Yersinia yopJ prevents phosphorylation and activation, thus blocking the MAPK signaling pathway.,PTM:Weakly autophosphorylated.,similarity:Belongs to the protein kinase superfamily.,similarity:Belongs to the protein kinase superfamily. STE Ser/Thr protein kinase family. MAP kinase kinase subfamily.,similarity:Contains 1 protein kinase domain.,subunit:Interacts with Yersinia yopJ.,tissue specificity:Isoform 2 is only expressed in skeletal muscle. Isoform 1, on the other hand, is found in skeletal muscle, heart, and in lesser extent in liver or pancreas.,		

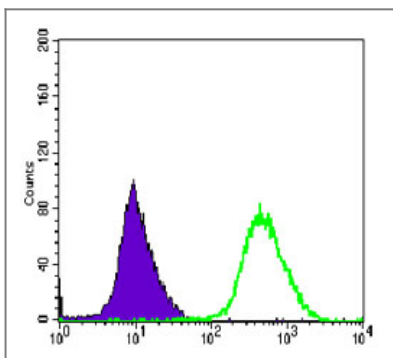
Validation Data



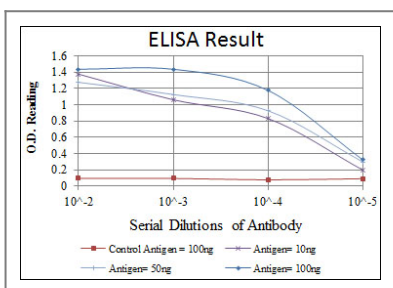
Western Blot analysis using MEK-6 Monoclonal Antibody against HepG2 (1), MCF-7 (2) and NIH/3T3 (3) cell lysate.



Immunofluorescence analysis of HeLa cells using MEK-6 Monoclonal Antibody (green). Blue: DRAQ5 fluorescent DNA dye.



Flow cytometric analysis of HeLa cells using MEK-6 Monoclonal Antibody (green) and negative control (purple).



## Contact information

Orders: [order@immunoway.com](mailto:order@immunoway.com)  
 Support: [tech@immunoway.com](mailto:tech@immunoway.com)  
 Telephone: 877-594-3616 (Toll Free), 408-747-0185  
 Website: <http://www.immunoway.com>  
 Address: 2200 Ringwood Ave San Jose, CA 95131 USA



Please scan the QR code  
 to access additional  
 product information:  
**MEK-6 Mouse mAb**

For Research Use Only. Not for Use in Diagnostic Procedures.

[Antibody](#) | [ELISA Kits](#) | [Protein](#) | [Reagents](#)