

M-CSF Mouse mAb

CatalogNo: YM0432

| Key Features

Host Species

- Mouse

Reactivity

- Human

Applications

- WB,IHC,IF,ELISA

MW

- 60kD (Calculated)

| Recommended Dilution Ratios

WB 1:500-1:2000

IHC 1:200-1:1000

ELISA 1:10000

IF 1:50-200

| Storage

Storage* -15°C to -25°C/1 year(Do not lower than -25°C)

Formulation Liquid in PBS containing 50% glycerol, 0.5% BSA and 0.02% sodium azide.

| Basic Information

Clonality Monoclonal

Clone Number 1B1

| Immunogen Information

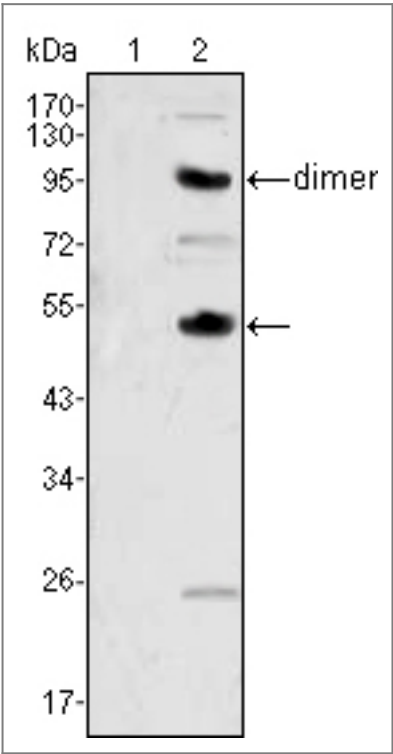
Immunogen Purified recombinant fragment of human M-CSF expressed in E. Coli.

Specificity M-CSF Monoclonal Antibody detects endogenous levels of M-CSF protein.

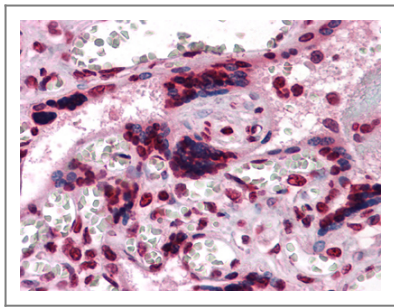
Target Information

Gene name	CSF1		
Protein Name	Macrophage colony-stimulating factor 1		
	Organism	Gene ID	UniProt ID
	Human	1435 ;	P09603 ;
	Mouse		P07141 ;
Cellular Localization	Cell membrane ; Single-pass type I membrane protein .; [Processed macrophage colony-stimulating factor 1]: Secreted, extracellular space.		
Tissue specificity	Endometrium,Kidney,Pancreatic carcinoma,T lymphoblast,Trophoblast,Urine,		
Function	Function:Granulocyte/macrophage colony-stimulating factors are cytokines that act in hematopoiesis by controlling the production, differentiation, and function of 2 related white cell populations of the blood, the granulocytes and the monocytes-macrophages. CSF-1 induces cells of the monocyte/macrophage lineage. It plays a role in immunological defenses, bone metabolism, lipoproteins clearance, fertility and pregnancy.,PTM:Glycosylation and proteolytic cleavage yield different soluble forms. A high molecular weight soluble form is a proteoglycan containing chondroitin sulfate.,PTM:Isoform 1 is N- and O-glycosylated. Isoform 3 is N-glycosylated.,subunit:Homodimer or heterodimer; disulfide-linked.,		

Validation Data



Western Blot analysis using M-CSF Monoclonal Antibody against human recombinant CSF2 (1) and CSF1 (2).



Immunohistochemistry analysis of paraffin-embedded human Placenta tissues with AEC staining using M-CSF Monoclonal Antibody.

Contact information

Orders: order@immunoway.com
Support: tech@immunoway.com
Telephone: 877-594-3616 (Toll Free), 408-747-0185
Website: <http://www.immunoway.com>
Address: 2200 Ringwood Ave San Jose, CA 95131 USA



Please scan the QR code to access additional product information:
M-CSF Mouse mAb

For Research Use Only. Not for Use in Diagnostic Procedures.

[Antibody](#) | [ELISA Kits](#) | [Protein](#) | [Reagents](#)