

Lsk Mouse mAb

CatalogNo: YM0423

Key Features

Host Species

- Mouse

Reactivity

- Human

Applications

- WB,FC,ELISA

MW

- 56kD (Calculated)

Storage

Storage* -15°C to -25°C/1 year(Do not lower than -25°C)

Formulation Liquid in PBS containing 50% glycerol, 0.5% BSA and 0.02% sodium azide.

Recommended Dilution Ratios

WB 1:500-1:2000

Flow Cyt 1:200-1:400

ELISA 1:10000

Not yet tested in other applications.

Basic Information

Clonality Monoclonal

Clone Number 16A3

Immunogen Information

Immunogen Purified recombinant fragment of human Lsk expressed in E. Coli.

Specificity Lsk Monoclonal Antibody detects endogenous levels of Lsk protein.

Target Information

Gene name MATK

Protein Name Megakaryocyte-associated tyrosine-protein kinase

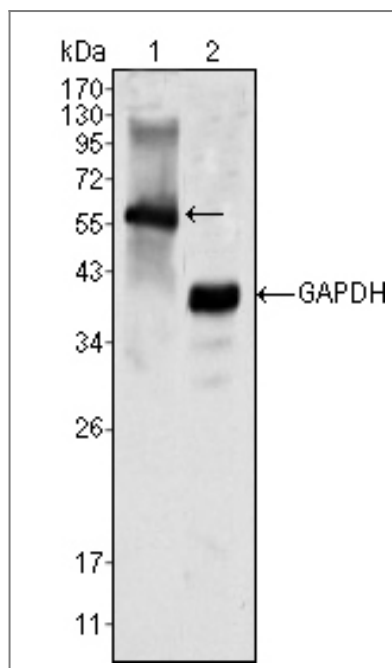
Organism	Gene ID	UniProt ID
Human	4145;	P42679;

Cellular Localization Cytoplasm . Membrane . In platelets, 90% of MATK localizes to the membrane fraction, and translocates to the cytoskeleton upon thrombin stimulation.

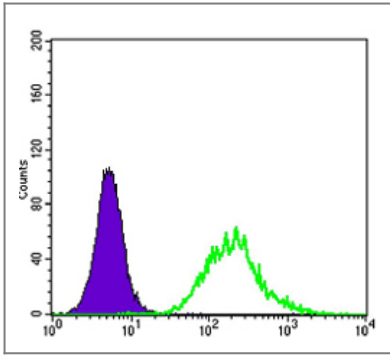
Tissue specificity Expressed in various myeloid cell lines, detected in brain and lung.

Function Catalytic activity:ATP + a [protein]-L-tyrosine = ADP + a [protein]-L-tyrosine phosphate.,Function:Could play a significant role in the signal transduction of hematopoietic cells. May regulate tyrosine kinase activity of SRC-family members in brain by specifically phosphorylating their C-terminal regulatory tyrosine residue which acts as a negative regulatory site. It may play an inhibitory role in the control of T-cell proliferation.,PTM:Phosphorylated upon DNA damage, probably by ATM or ATR.,similarity:Belongs to the protein kinase superfamily. Tyr protein kinase family.,similarity:Belongs to the protein kinase superfamily. Tyr protein kinase family. CSK subfamily.,similarity:Contains 1 protein kinase domain.,similarity:Contains 1 SH2 domain.,similarity:Contains 1 SH3 domain.,tissue specificity:Expressed in various myeloid cell lines, detected in brain and lung.,

Validation Data



Western Blot analysis using Lsk Monoclonal Antibody against K562 cell lysate (1).



Flow cytometric analysis of K562 cells using Lsk Monoclonal Antibody (green) and negative control (purple).

Contact information

Orders: order@immunoway.com
Support: tech@immunoway.com
Telephone: 877-594-3616 (Toll Free), 408-747-0185
Website: <http://www.immunoway.com>
Address: 2200 Ringwood Ave San Jose, CA 95131 USA



Please scan the QR code to access additional product information:
Lsk Mouse mAb

For Research Use Only. Not for Use in Diagnostic Procedures.

[Antibody](#) | [ELISA Kits](#) | [Protein](#) | [Reagents](#)