

LMP7A Mouse mAb

CatalogNo: YM0419

Key Features

Host Species

- Mouse

Reactivity

- Human,Rat

Applications

- WB,IHC,IF,ELISA

MW

- 30kD (Calculated)

Recommended Dilution Ratios

WB 1:500-1:2000

IHC 1:200-1:1000

IF 1:200-1:1000

ELISA 1:10000

Not yet tested in other applications.

Storage

Storage* -15°C to -25°C/1 year(Do not lower than -25°C)

Formulation Liquid in PBS containing 50% glycerol, 0.5% BSA and 0.02% sodium azide.

Basic Information

Clonality Monoclonal

Clone Number 19H2

Immunogen Information

Immunogen Purified recombinant fragment of human LMP7A expressed in E. Coli.

Specificity LMP7A Monoclonal Antibody detects endogenous levels of LMP7A protein.

Target Information

Gene name PSMB8

Protein Name Proteasome subunit beta type-8

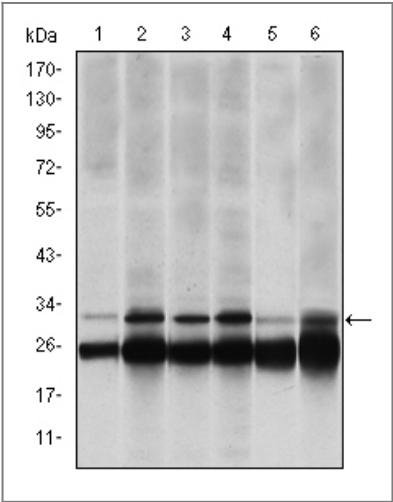
Organism	Gene ID	UniProt ID
Human	5696 ;	P28062 ;
Mouse		P28063 ;
Rat	24968 ;	P28064 ;

Cellular Localization Cytoplasm . Nucleus .

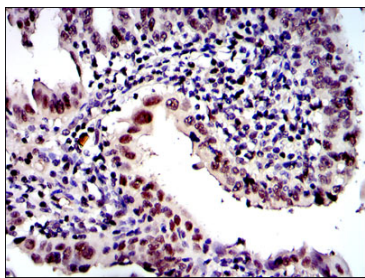
Tissue specificity Blood,Skin,

Function Alternative products:Additional isoforms seem to exist,Catalytic activity:Cleavage of peptide bonds with very broad specificity.,Function:The proteasome is a multicatalytic proteinase complex which is characterized by its ability to cleave peptides with Arg, Phe, Tyr, Leu, and Glu adjacent to the leaving group at neutral or slightly basic pH. The proteasome has an ATP-dependent proteolytic activity. This subunit is involved in antigen processing to generate class I binding peptides.,similarity:Belongs to the peptidase T1B family.,subunit:The 26S proteasome consists of a 20S proteasome core and two 19S regulatory subunits. The 20S proteasome core is composed of 28 subunits that are arranged in four stacked rings, resulting in a barrel-shaped structure. The two end rings are each formed by seven alpha subunits, and the two central rings are each formed by seven beta subunits. The catalytic chamber with the active sites is on the inside of the barrel. This subunit is part of the immunoproteasome where it displaces the equivalent housekeeping subunit PSMB5. Directly interacts with POMP.,

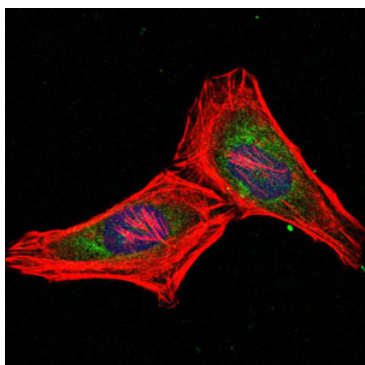
Validation Data



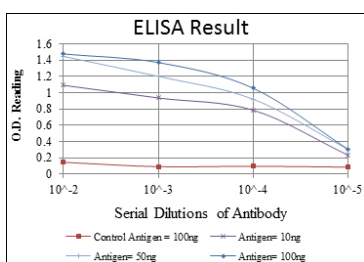
Western Blot analysis using LMP7A Monoclonal Antibody against HeLa (1), MCF-7 (2), A431 (3), RAJI (4), MOTL4 (5) and PC-12 (6) cell lysate.



Immunohistochemistry analysis of paraffin-embedded intima cancer tissues with DAB staining using LMP7A Monoclonal Antibody.



Immunofluorescence analysis of Hela cells using LMP7A Monoclonal Antibody (green). Blue: DRAQ5 fluorescent DNA dye. Red: Actin filaments have been labeled with Alexa Fluor-555 phalloidin.



Contact information

Orders: order@immunoway.com
 Support: tech@immunoway.com
 Telephone: 877-594-3616 (Toll Free), 408-747-0185
 Website: <http://www.immunoway.com>
 Address: 2200 Ringwood Ave San Jose, CA 95131 USA



Please scan the QR code to access additional product information:
LMP7A Mouse mAb

For Research Use Only. Not for Use in Diagnostic Procedures.

[Antibody](#) | [ELISA Kits](#) | [Protein](#) | [Reagents](#)