

## LAL Mouse mAb

CatalogNo: YM0410

### | Key Features

#### Host Species

- Mouse

#### Reactivity

- Human

#### Applications

- WB,ELISA

#### MW

- 45kD (Calculated)

### | Recommended Dilution Ratios

**WB 1:500-1:2000**

**ELISA 1:10000**

**Not yet tested in other applications.**

### | Storage

**Storage\*** -15°C to -25°C/1 year(Do not lower than -25°C)

**Formulation** Liquid in PBS containing 50% glycerol, 0.5% BSA and 0.02% sodium azide.

### | Basic Information

**Clonality** Monoclonal

### | Immunogen Information

**Immunogen** Purified recombinant fragment of LAL expressed in E. Coli.

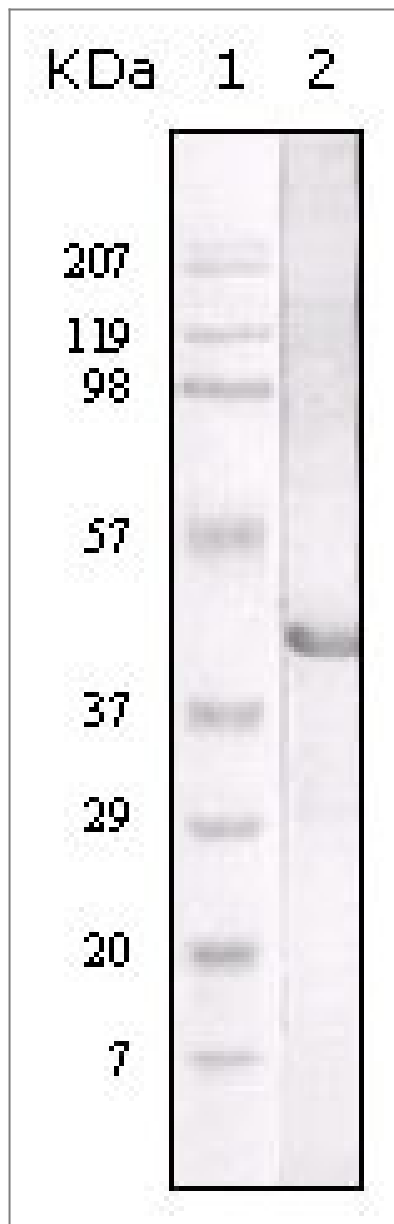
**Specificity** LAL Monoclonal Antibody detects endogenous levels of LAL protein.

### | Target Information

**Gene name** LIPA

<b>Protein Name</b>	Lysosomal acid lipase/cholesteryl ester hydrolase		
	<b>Organism</b>	<b>Gene ID</b>	<b>UniProt ID</b>
	Human	<a href="#">3988</a> ;	<a href="#">P38571</a> ;
	Mouse		<a href="#">Q9Z0M5</a> ;
<b>Cellular Localization</b>	Lysosome .		
<b>Tissue specificity</b>	Most abundantly expressed in brain, lung, kidney and mammary gland, a moderate expression seen in placenta and expressed at low levels in the liver and heart.		
<b>Function</b>	<p>Catalytic activity:A steryl ester + H(2)O = a sterol + a fatty acid.,Disease:Defects in LIPA are the cause of cholesteryl ester storage disease (CESD) [MIM:278000]. CESD is a mild manifestation of LIPA deficiency, leading to the accumulation of cholesteryl esters and triglycerides in most tissues of the body. It is characterized by late-onset.,Disease:Defects in LIPA are the cause of Wolman disease (WOD) [MIM:278000]. WOD is a severe manifestation of LIPA deficiency, leading to the accumulation of cholesteryl esters and triglycerides in most tissues of the body. WOD occurs in infancy and is nearly always fatal before the age of 1 year.,Function:Crucial for the intracellular hydrolysis of cholesteryl esters and triglycerides that have been internalized via receptor-mediated endocytosis of lipoprotein particles. Important in mediating the effect of LDL (low density lipoprotein) uptake on suppression of hydroxymethylglutaryl-CoA reductase and activation of endogenous cellular cholesteryl ester formation.,similarity:Belongs to the AB hydrolase superfamily. Lipase family.,</p>		

| Validation Data



Western Blot analysis using LAL Monoclonal Antibody against LAL recombinant protein.

## Contact information

Orders: [order@immunoway.com](mailto:order@immunoway.com)  
Support: [tech@immunoway.com](mailto:tech@immunoway.com)  
Telephone: 877-594-3616 (Toll Free), 408-747-0185  
Website: <http://www.immunoway.com>  
Address: 2200 Ringwood Ave San Jose, CA 95131 USA



Please scan the QR code  
to access additional  
product information:  
**LAL Mouse mAb**

For Research Use Only. Not for Use in Diagnostic Procedures.

[Antibody](#) | [ELISA Kits](#) | [Protein](#) | [Reagents](#)