

KSHV ORF26 Mouse mAb

CatalogNo: YM0406

Key Features

Host Species

- Mouse

Reactivity

- Human

Applications

- WB,ELISA

Storage

Storage* -15°C to -25°C/1 year(Do not lower than -25°C)

Formulation Liquid in PBS containing 50% glycerol, 0.5% BSA and 0.02% sodium azide.

Recommended Dilution Ratios

WB 1:500-1:2000

ELISA 1:10000

Not yet tested in other applications.

Basic Information

Clonality Monoclonal

Clone Number 20E1

Immunogen Information

Immunogen Purified recombinant fragment of KSHV ORF26 expressed in E. Coli.

Specificity KSHV ORF26 Monoclonal Antibody detects KSHV ORF26 protein.

Target Information

Protein Name

Organism

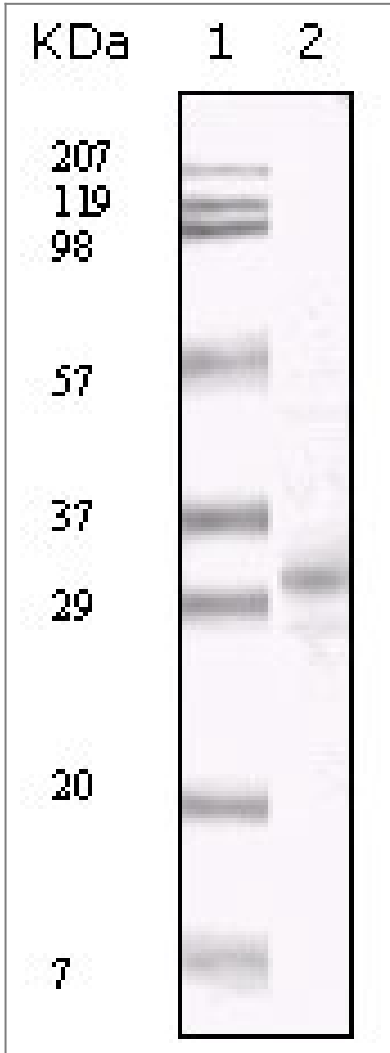
Gene ID

UniProt ID

Human

[4961510](#);

Validation Data



Western Blot analysis using KSHV ORF26 Monoclonal Antibody against TPA induced BCBL-1 cell lysate.

Contact information

Orders: order@immunoway.com
Support: tech@immunoway.com
Telephone: 877-594-3616 (Toll Free), 408-747-0185
Website: <http://www.immunoway.com>
Address: 2200 Ringwood Ave San Jose, CA 95131 USA



Please scan the QR code to access additional product information:
KSHV ORF26 Mouse mAb