

KLF15 Mouse mAb

CatalogNo: YM0396

Key Features

Host Species

- Mouse

Reactivity

- Human

Applications

- WB,ELISA

MW

- 44kD (Calculated)

Recommended Dilution Ratios

WB 1:500-1:2000

ELISA 1:10000

Not yet tested in other applications.

Storage

Storage* -15°C to -25°C/1 year(Do not lower than -25°C)

Formulation Liquid in PBS containing 50% glycerol, 0.5% BSA and 0.02% sodium azide.

Basic Information

Clonality Monoclonal

Immunogen Information

Immunogen Purified recombinant fragment of human KLF15 expressed in E. Coli.

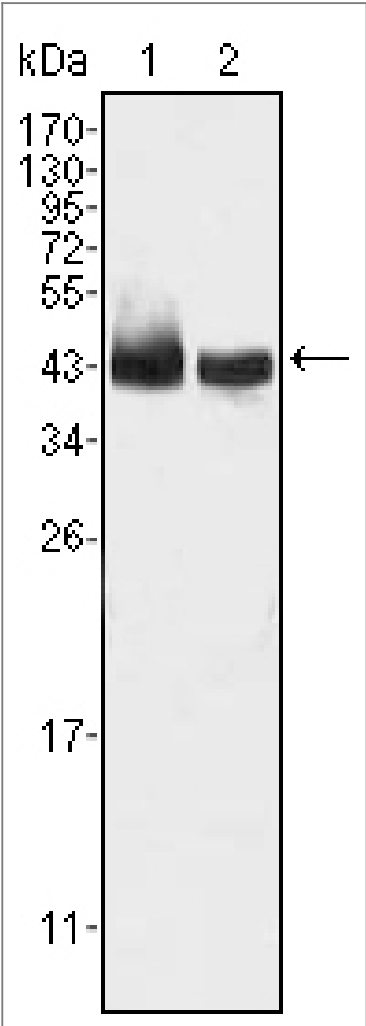
Specificity KLF15 Monoclonal Antibody detects endogenous levels of KLF15 protein.

Target Information

Gene name KLF15

Protein Name	Krueppel-like factor 15		
	Organism	Gene ID	UniProt ID
	Human	28999;	Q9UIH9;
	Mouse		Q9EPW2;
Cellular Localization	Nucleus .		
Tissue specificity	Highly expressed in liver, skeletal muscle, and kidney. Expressed in cardiomyocytes. Expression is highly reduced in cardiac tissue of patients with non-ischemic cardiomyopathy and aortic aneurysm, and in glomerular disease. Not expressed in bone marrow or lymphoid tissues.		
Function	Function:Transcriptional activator. Binds to the GA element of the CLCNKA promoter.,similarity:Belongs to the Sp1 C2H2-type zinc-finger protein family.,similarity:Contains 3 C2H2-type zinc fingers.,tissue specificity:Highly expressed in liver, followed by heart, skeletal muscle, and kidney. Not expressed in bone marrow or lymphoid tissues.,		

Validation Data



Western Blot analysis using KLF15 Monoclonal Antibody against HepG2 (1) and SMMC-7721 (2) cell lysate.

| Contact information

Orders: order@immunoway.com
Support: tech@immunoway.com
Telephone: 877-594-3616 (Toll Free), 408-747-0185
Website: <http://www.immunoway.com>
Address: 2200 Ringwood Ave San Jose, CA 95131 USA



Please scan the QR code
to access additional
product information:
KLF15 Mouse mAb

For Research Use Only. Not for Use in Diagnostic Procedures.

[Antibody](#) | [ELISA Kits](#) | [Protein](#) | [Reagents](#)