

## IL-6 Mouse mAb

CatalogNo: YM0372

### Key Features

#### Host Species

- Mouse

#### Reactivity

- Human

#### Applications

- WB, ELISA

#### MW

- 24kD (Calculated)

### Recommended Dilution Ratios

**WB 1:500-1:2000**

**ELISA 1:10000**

**Not yet tested in other applications.**

### Storage

**Storage\*** -15°C to -25°C/1 year (Do not lower than -25°C)

**Formulation** Liquid in PBS containing 50% glycerol, 0.5% BSA and 0.02% sodium azide.

### Basic Information

**Clonality** Monoclonal

### Immunogen Information

**Immunogen** Purified recombinant fragment of human IL-6 expressed in E. Coli.

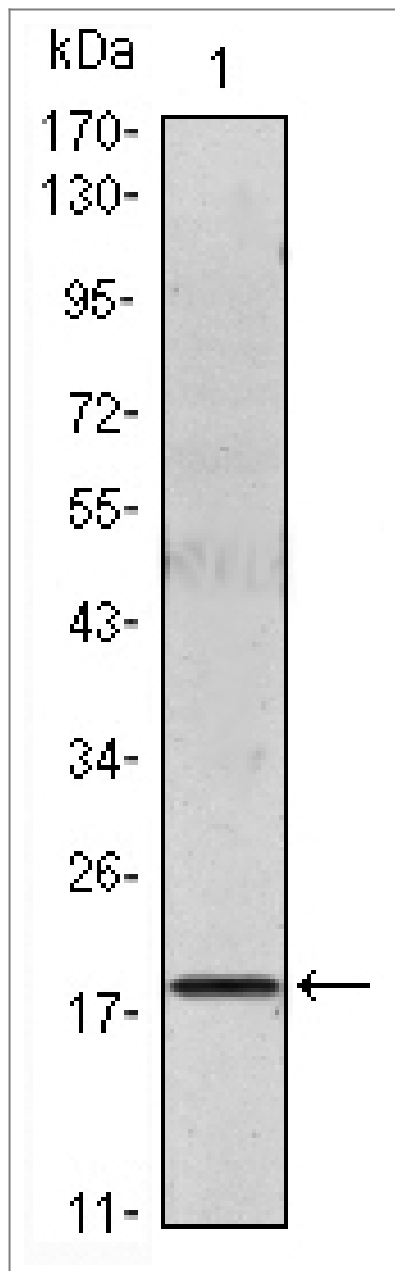
**Specificity** IL-6 Monoclonal Antibody detects endogenous levels of IL-6 protein.

### Target Information

**Gene name** IL6

Protein Name	Interleukin-6		
	Organism	Gene ID	UniProt ID
	Human	<a href="#">3569;</a>	<a href="#">P05231;</a>
	Mouse		<a href="#">P08505;</a>
Cellular Localization	Secreted .		
Tissue specificity	Produced by skeletal muscle.		
Function	<p>Disease:At least 1 polymorphism in the IL6 gene renders HIV-infected men susceptible to Kaposi sarcoma [MIM:148000]. Kaposi sarcoma is a sarcoma of spindle cells mixed with angiomatous tissue. A relatively rare malignant skin tumor that results in multifocal purplish coloured papules or plaques that eventually form nodules. Most commonly seen in patients who suffer from AIDS.,Disease:Genetic variations in IL6 are associated with susceptibility to systemic juvenile rheumatoid arthritis [MIM:604302]. Systemic juvenile rheumatoid arthritis is juvenile chronic arthritis associated with severe, debilitating, extraarticular features, and occasionally fatal complications. Despite medical treatment, many children still experience early joint destruction, necessitating surgical replacement.,Function:IL-6 is a cytokine with a wide variety of biological functions: it plays an essential role in the final differentiation of B-cells into Ig-secreting cells, it induces myeloma and plasmacytoma growth, it induces nerve cells differentiation, in hepatocytes it induces acute phase reactants.,online information:Interleukin-6 entry,online information:The Singapore human mutation and polymorphism database,polymorphism:Genetic variations in IL6 may be correlated with bone mineral density (BMD). Low BMD is a risk factor for osteoporotic fracture. Osteoporosis is characterized by reduced bone mineral density, disruption of bone microarchitecture, and the alteration of the amount and variety of non-collagenous proteins in bone. Osteoporotic bones are more at risk of fracture.,PTM:N- and O-glycosylated.,similarity:Belongs to the IL-6 superfamily.,</p>		

| Validation Data



Western Blot analysis using IL-6 mouse mAb against IL-6 recombinant protein.

## Contact information

Orders: [order@immunoway.com](mailto:order@immunoway.com)  
Support: [tech@immunoway.com](mailto:tech@immunoway.com)  
Telephone: 877-594-3616 (Toll Free), 408-747-0185  
Website: <http://www.immunoway.com>  
Address: 2200 Ringwood Ave San Jose, CA 95131 USA



Please scan the QR code  
to access additional  
product information:  
**IL-6 Mouse mAb**