

## GDF-8 Mouse mAb

CatalogNo: YM0303

### Key Features

#### Host Species

- Mouse

#### Reactivity

- Human

#### Applications

- WB,ELISA

#### MW

- 43kD (Calculated)

### Recommended Dilution Ratios

**WB 1:500-1:2000**

**ELISA 1:10000**

**Not yet tested in other applications.**

### Storage

**Storage\*** -15°C to -25°C/1 year(Do not lower than -25°C)

**Formulation** Liquid in PBS containing 50% glycerol, 0.5% BSA and 0.02% sodium azide.

### Basic Information

**Clonality** Monoclonal

### Immunogen Information

**Immunogen** Purified recombinant fragment of GDF-8 expressed in E. Coli.

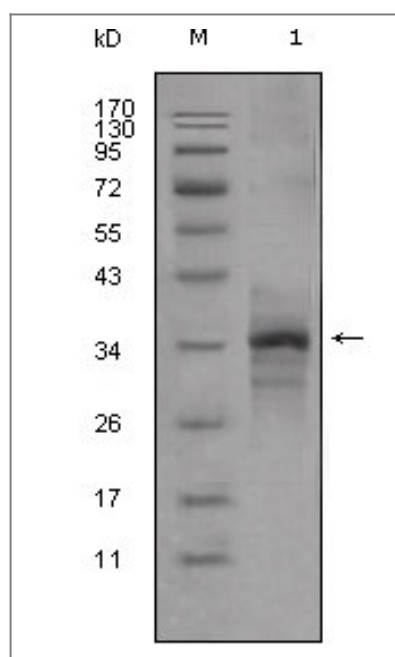
**Specificity** GDF-8 Monoclonal Antibody detects endogenous levels of GDF-8 protein.

### Target Information

**Gene name** MSTN

<b>Protein Name</b>	Growth/differentiation factor 8		
	<b>Organism</b>	<b>Gene ID</b>	<b>UniProt ID</b>
	Human	<a href="#">2660</a> ;	<a href="#">O14793</a> ;
	Mouse		<a href="#">O08689</a> ;
<b>Cellular Localization</b>	Secreted .		
<b>Tissue specificity</b>	Colon,Muscle,Pericardium,Skeletal muscle,		
<b>Function</b>	Function:Acts specifically as a negative regulator of skeletal muscle growth.,online information:Myostatin entry,similarity:Belongs to the TGF-beta family.,subunit:Homodimer; disulfide-linked (By similarity). Interacts with WFIKKN2, leading to inhibit its activity.,		

## Validation Data



Western Blot analysis using GDF-8 Monoclonal Antibody against truncated GDF-8-His recombinant protein (1).

## Contact information

Orders: [order@immunoway.com](mailto:order@immunoway.com)  
 Support: [tech@immunoway.com](mailto:tech@immunoway.com)  
 Telephone: 877-594-3616 (Toll Free), 408-747-0185  
 Website: <http://www.immunoway.com>  
 Address: 2200 Ringwood Ave San Jose, CA 95131 USA



Please scan the QR code to access additional product information:  
**GDF-8 Mouse mAb**

