

FGFR1 Mouse mAb

CatalogNo: YM0276

Key Features

Host Species

- Mouse

Reactivity

- Human

Applications

- WB,ELISA

MW

- 120kD (Calculated)
full length 120-140kD,FOP-FGFR1 90kD
(Observed)

Recommended Dilution Ratios

WB 1:500-1:2000

ELISA 1:10000

Not yet tested in other applications.

Storage

Storage* -15°C to -25°C/1 year(Do not lower than -25°C)

Formulation Liquid in PBS containing 50% glycerol, 0.5% BSA and 0.02% sodium azide.

Basic Information

Clonality Monoclonal

Immunogen Information

Immunogen Purified recombinant extracellular fragment of human Flg (aa22-376) fused with hlgGfc tag expressed in HEK293 cells.

Specificity Flg Monoclonal Antibody detects endogenous levels of Flg protein.

| Target Information

Gene name FGFR1 BFGFR CEK FGFR FLG FLT2 HBGFR

Protein Name Fibroblast growth factor receptor 1

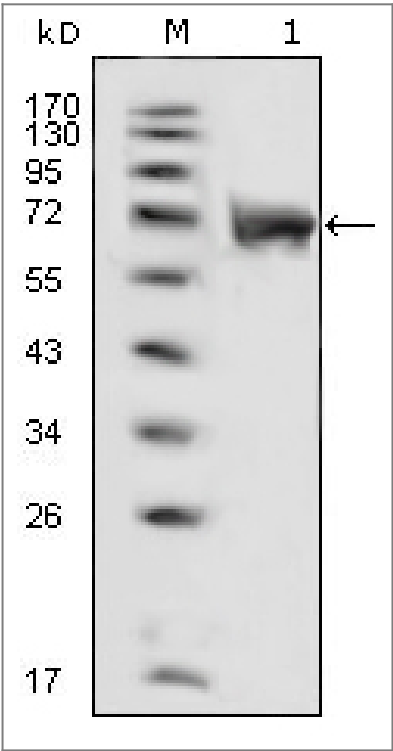
Organism	Gene ID	UniProt ID
Human	2260;	P11362;
Mouse		P16092;

Cellular Localization Cell membrane; Single-pass type I membrane protein. Nucleus. Cytoplasm, cytosol. Cytoplasmic vesicle. After ligand binding, both receptor and ligand are rapidly internalized. Can translocate to the nucleus after internalization, or by translocation from the endoplasmic reticulum or Golgi apparatus to the cytosol, and from there to the nucleus.

Tissue specificity Detected in astrocytoma, neuroblastoma and adrenal cortex cell lines. Some isoforms are detected in foreskin fibroblast cell lines, however isoform 17, isoform 18 and isoform 19 are not detected in these cells.

Function Receptor for basic fibroblast growth factor. Receptor for FGF23 in the presence of KL (By similarity). A shorter form of the receptor could be a receptor for FGF1 (aFGF).

| Validation Data



Western Blot analysis using Flg Monoclonal Antibody against extracellular domain of human Flg (aa22-376).

| Contact information

Orders: order@immunoway.com
Support: tech@immunoway.com
Telephone: 877-594-3616 (Toll Free), 408-747-0185
Website: <http://www.immunoway.com>
Address: 2200 Ringwood Ave San Jose, CA 95131 USA



Please scan the QR code
to access additional
product information:
FGFR1 Mouse mAb

For Research Use Only. Not for Use in Diagnostic Procedures.

[Antibody](#) | [ELISA Kits](#) | [Protein](#) | [Reagents](#)