

## FGFR-4 Mouse mAb

CatalogNo: YM0267

### Key Features

#### Host Species

- Mouse

#### Reactivity

- Human

#### Applications

- WB,IF,ELISA

#### MW

- 88kD (Calculated)

### Recommended Dilution Ratios

**WB 1:500-1:2000**

**IF 1:200-1:1000**

**ELISA 1:10000**

**Not yet tested in other applications.**

### Storage

#### Storage\*

-15°C to -25°C/1 year(Do not lower than -25°C)

#### Formulation

Liquid in PBS containing 50% glycerol, 0.5% BSA and 0.02% sodium azide.

### Basic Information

#### Clonality

Monoclonal

### Immunogen Information

#### Immunogen

Purified recombinant extracellular fragment of human FGFR-4 fused with hIgGfc tag expressed in HEK293 cell line.

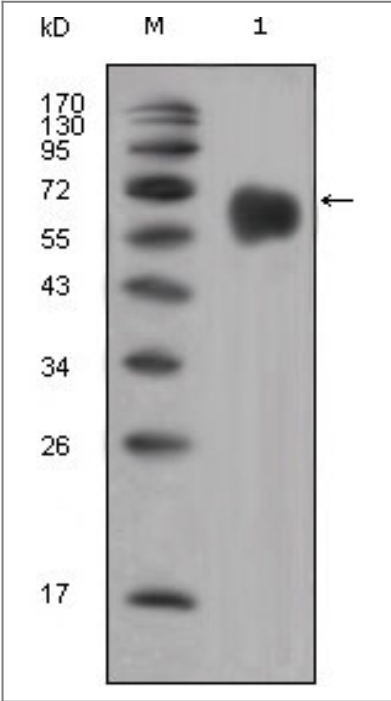
#### Specificity

FGFR-4 Monoclonal Antibody detects endogenous levels of FGFR-4 protein.

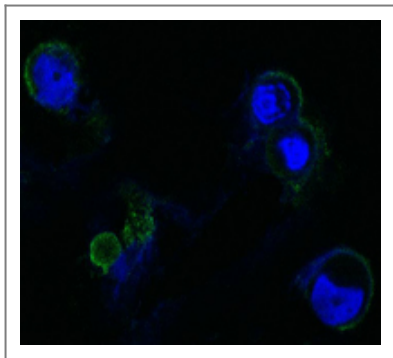
### Target Information

Gene name	FGFR4		
Protein Name	Fibroblast growth factor receptor 4		
	Organism	Gene ID	UniProt ID
	Human	<a href="#">2264</a> ;	<a href="#">P22455</a> ;
	Mouse		<a href="#">Q03142</a> ;
Cellular Localization	Cell membrane; Single-pass type I membrane protein. Endosome. Endoplasmic reticulum. Internalized from the cell membrane to recycling endosomes, and from there back to the cell membrane.; [Isoform 2]: Secreted.; [Isoform 3]: Cytoplasm .		
Tissue specificity	Expressed in gastrointestinal epithelial cells, pancreas, and gastric and pancreatic cancer cell lines.		
Function	Catalytic activity:ATP + a [protein]-L-tyrosine = ADP + a [protein]-L-tyrosine phosphate.,Function:Receptor for acidic fibroblast growth factor. Does not bind to basic fibroblast growth factor. Binds FGF19.,PTM:Glycosylated (By similarity). Phosphorylated on tyrosine residue (By similarity). Phosphorylation requires the presence of a functional (phosphorylated) FGFR1 and not necessarily by means of FGFR heterodimerization.,similarity:Belongs to the protein kinase superfamily. Tyr protein kinase family.,similarity:Belongs to the protein kinase superfamily. Tyr protein kinase family. Fibroblast growth factor receptor subfamily.,similarity:Contains 1 protein kinase domain.,similarity:Contains 3 Ig-like C2-type (immunoglobulin-like) domains.,subcellular location:Isoform 2 may be secreted.,subunit:Interacts with KLB.,tissue specificity:Expressed in gastrointestinal epithelial cells, pancreas, and gastric and pancreatic cancer cell lines.,		

Validation Data



Western Blot analysis using FGFR-4 Monoclonal Antibody against extracellular domain of human FGFR-4 (aa22-369).



Confocal immunofluorescence analysis of methanol-fixed HEK293 cells trasfected with FGFR4-hlgGfc using FGFR-4 Monoclonal Antibody (green), showing membrane localization. Blue: DRAQ5 fluorescent DNA dye.

## | Contact information

Orders: [order@immunoway.com](mailto:order@immunoway.com)  
Support: [tech@immunoway.com](mailto:tech@immunoway.com)  
Telephone: 877-594-3616 (Toll Free), 408-747-0185  
Website: <http://www.immunoway.com>  
Address: 2200 Ringwood Ave San Jose, CA 95131 USA



Please scan the QR code  
to access additional  
product information:  
**FGFR-4 Mouse mAb**

---

For Research Use Only. Not for Use in Diagnostic Procedures.

[Antibody](#) | [ELISA Kits](#) | [Protein](#) | [Reagents](#)