

FAK Mouse mAb

CatalogNo: YM0260

Orthogonal Validated 

Key Features

Host Species

- Mouse

Reactivity

- Human

Applications

- WB, ELISA

MW

- 119kD (Calculated)

Recommended Dilution Ratios

WB 1:500-1:2000**ELISA 1:10000****Not yet tested in other applications.**

Storage

Storage* -15°C to -25°C/1 year (Do not lower than -25°C)**Formulation** Liquid in PBS containing 50% glycerol, 0.5% BSA and 0.02% sodium azide.

Basic Information

Clonality Monoclonal**Clone Number** 12G5

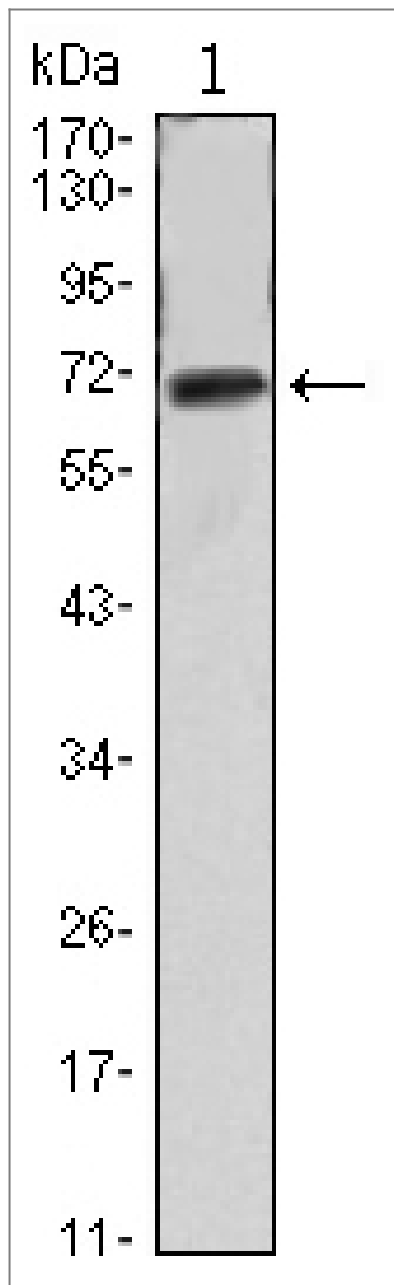
Immunogen Information

Immunogen Purified recombinant fragment of human FAK expressed in E. Coli.**Specificity** FAK Monoclonal Antibody detects endogenous levels of FAK protein.

Target Information

Gene name	PTK2		
Protein Name	Focal adhesion kinase 1		
	Organism	Gene ID	UniProt ID
	Human	5747;	Q05397;
	Mouse		P34152;
Cellular Localization	Cell junction, focal adhesion. Cell membrane; Peripheral membrane protein; Cytoplasmic side. Cytoplasm, cell cortex. Cytoplasm, cytoskeleton. Cytoplasm, cytoskeleton, microtubule organizing center, centrosome . Nucleus. Cytoplasm, cytoskeleton, cilium basal body . Constituent of focal adhesions. Detected at microtubules.		
Tissue specificity	Detected in B and T-lymphocytes. Isoform 1 and isoform 6 are detected in lung fibroblasts (at protein level). Ubiquitous. Expressed in epithelial cells (at protein level) (PubMed:31630787).		
Function	Catalytic activity:ATP + a [protein]-L-tyrosine = ADP + a [protein]-L-tyrosine phosphate.,Domain:The carboxy-terminal region is the site of focal adhesion targeting (FAT) sequence which mediates the localization of FAK1 to focal adhesions.,Domain:The first Pro-rich domain interacts with the SH3 domain of CRK-associated substrate (BCAR1) and CASL.,Function:Non-receptor protein-tyrosine kinase implicated in signaling pathways involved in cell motility, proliferation and apoptosis. Activated by tyrosine-phosphorylation in response to either integrin clustering induced by cell adhesion or antibody cross-linking, or via G-protein coupled receptor (GPCR) occupancy by ligands such as bombesin or lysophosphatidic acid, or via LDL receptor occupancy. Plays a potential role in oncogenic transformations resulting in increased kinase activity.,PTM:Phosphorylated on 6 tyrosine residues upon activation.,similarity:Belongs to the protein kinase superfamily. Tyr protein kinase family.,similarity:Belongs to the protein kinase superfamily. Tyr protein kinase family. FAK subfamily.,similarity:Contains 1 FERM domain.,similarity:Contains 1 protein kinase domain.,subcellular location:Constituent of focal adhesions.,subunit:Interacts with CAS family members and with GIT1, SORBS1 and BCAR3. Interacts with RGNEF and SHB (By similarity). Interacts with TGFB1I1.,tissue specificity:Expressed in all organs tested, in lymphoid cell lines, but most abundantly in brain.,		

| Validation Data



Western Blot analysis using FAK Monoclonal Antibody against FAK-hlgGfc transfected HEK293 cell lysate.

Contact information

Orders: order@immunoway.com
Support: tech@immunoway.com
Telephone: 877-594-3616 (Toll Free), 408-747-0185
Website: <http://www.immunoway.com>
Address: 2200 Ringwood Ave San Jose, CA 95131 USA



Please scan the QR code
to access additional
product information:
FAK Mouse mAb