

ETS1 Mouse mAb

CatalogNo: YM0255

| Key Features

Host Species

- Mouse

Reactivity

- Human

Applications

- WB,IHC,IF,FC,ELISA

MW

- 50kD (Calculated)

| Recommended Dilution Ratios

WB 1:500-1:2000

IHC 1:200-1:1000

IF 1:200-1:1000

Flow Cyt 1:200-1:400

ELISA 1:10000

Not yet tested in other applications.

| Storage

Storage* -15°C to -25°C/1 year(Do not lower than -25°C)

Formulation Liquid in PBS containing 50% glycerol, 0.5% BSA and 0.02% sodium azide.

| Basic Information

Clonality Monoclonal

| Immunogen Information

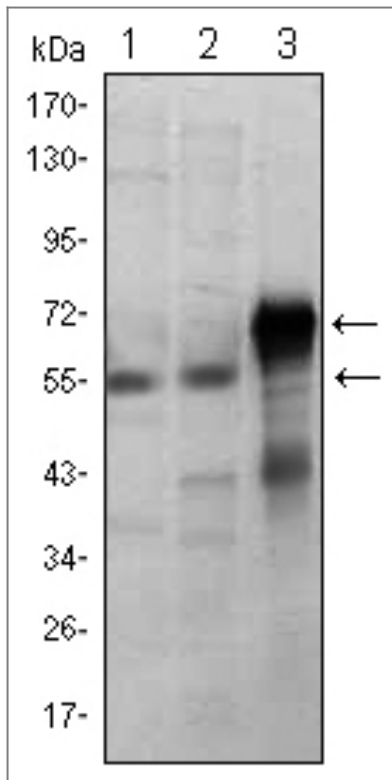
Immunogen Purified recombinant fragment of human ETS1 expressed in E. Coli.

Specificity ETS1 Monoclonal Antibody detects endogenous levels of ETS1 protein.

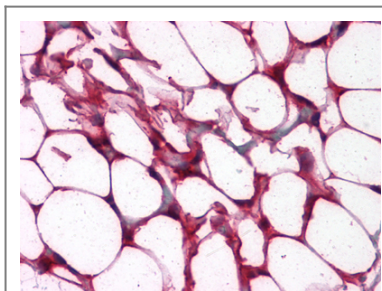
| Target Information

Gene name	ETS1		
Protein Name	Protein C-ets-1		
	Organism	Gene ID	UniProt ID
	Human	2113 ;	P14921 ;
	Mouse	23871 ;	P27577 ;
Cellular Localization	Cytoplasm . Nucleus . Delocalizes from nucleus to cytoplasm when coexpressed with isoform Ets-1 p27. .		
Tissue specificity	Highly expressed within lymphoid cells. Isoforms c-ETS-1A and Ets-1 p27 are both detected in all fetal tissues tested, but vary with tissue type in adult tissues. None is detected in brain or kidney.		
Function	Disease:ETS is responsible for erythroblast and fibroblast transformation. The juxtaposition of the interferon and c-ETS-1 proto-oncogene may be involved in the pathogenesis of human monocytic leukemia.,Function:Transcription factor.,PTM:Sumoylated on Lys-15 and Lys-227, preferentially by SUMO2; which inhibits transcriptional activity.,PTM:Ubiquitinated; which induces proteasomal degradation.,similarity:Belongs to the ETS family.,similarity:Contains 1 ETS DNA-binding domain.,similarity:Contains 1 PNT (pointed) domain.,subunit:Interacts with MAF and MAFB (By similarity). Binds to DAXX. Interacts with UBE2I.,		

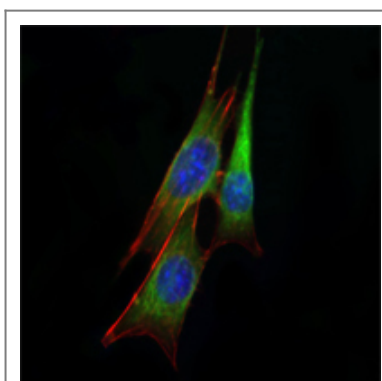
| Validation Data



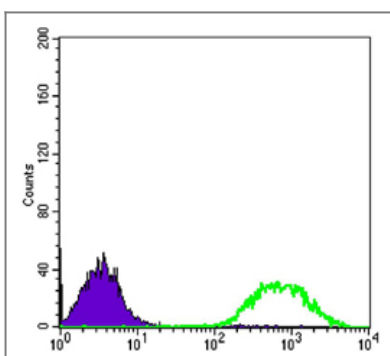
Western Blot analysis using ETS1 Monoclonal Antibody against Jurkat (1), HepG2 (2) and ETS1-hlgGfc transfected HEK293 (3) cell lysate.



Immunohistochemistry analysis of paraffin-embedded human Colon, Adipocytes tissues with AEC staining using ETS1 Monoclonal Antibody.



Immunofluorescence analysis of NIH/3T3 cells using ETS1 Monoclonal Antibody (green). Blue: DRAQ5 fluorescent DNA dye.



Flow cytometric analysis of Jurkat cells using ETS1 Monoclonal Antibody (green) and negative control (purple).

| Contact information

Orders: order@immunoway.com
Support: tech@immunoway.com
Telephone: 877-594-3616 (Toll Free), 408-747-0185
Website: <http://www.immunoway.com>
Address: 2200 Ringwood Ave San Jose, CA 95131 USA



Please scan the QR code
to access additional
product information:
ETS1 Mouse mAb

For Research Use Only. Not for Use in Diagnostic Procedures.

[Antibody](#) | [ELISA Kits](#) | [Protein](#) | [Reagents](#)