

## EphA4 Mouse mAb

CatalogNo: YM0224

Orthogonal Validated 

### Key Features

#### Host Species

- Mouse

#### Reactivity

- Human

#### Applications

- WB,ELISA

#### MW

- 110kD (Calculated)

### Recommended Dilution Ratios

**WB 1:500-1:2000****ELISA 1:10000****Not yet tested in other applications.**

### Storage

**Storage\*** -15°C to -25°C/1 year(Do not lower than -25°C)**Formulation** Liquid in PBS containing 50% glycerol, 0.5% BSA and 0.02% sodium azide.

### Basic Information

**Clonality** Monoclonal**Clone Number** 20B3

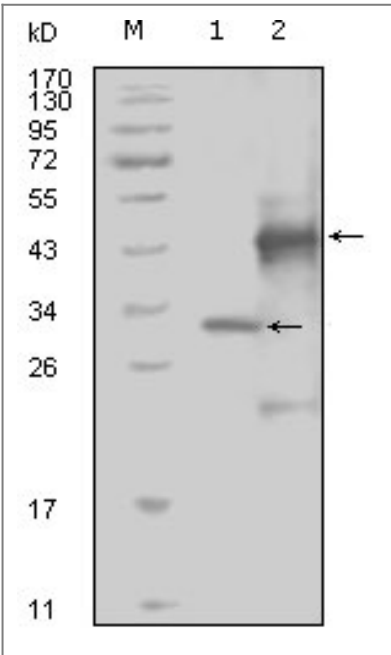
### Immunogen Information

**Immunogen** Purified recombinant fragment of EphA4 (aa777-986) expressed in E. Coli.**Specificity** EphA4 Monoclonal Antibody detects endogenous levels of EphA4 protein.

### Target Information

Gene name	EPHA4		
Protein Name	Ephrin type-A receptor 4		
	Organism	Gene ID	UniProt ID
	Human	<a href="#">2043</a> ;	<a href="#">P54764</a> ;
	Mouse		<a href="#">Q03137</a> ;
Cellular Localization	Cell membrane ; Single-pass type I membrane protein . Cell projection, axon . Cell projection, dendrite . Cell junction, synapse, postsynaptic density membrane . Early endosome . Cell junction, adherens junction . Clustered upon activation and targeted to early endosome. .		
Tissue specificity	Ubiquitous.		
Function	Catalytic activity:ATP + a [protein]-L-tyrosine = ADP + a [protein]-L-tyrosine phosphate.,Domain:The protein kinase domain mediates interaction with NGEF/ephexin-1.,Function:Receptor for members of the ephrin-A family. Binds to ephrin-A1, -A4 and -A5. Binds more poorly to ephrin-A2 and -A3. May play a role in a signal transduction process involved in hindbrain pattern formation.,similarity:Belongs to the protein kinase superfamily. Tyr protein kinase family.,similarity:Belongs to the protein kinase superfamily. Tyr protein kinase family. Ephrin receptor subfamily.,similarity:Contains 1 protein kinase domain.,similarity:Contains 1 SAM (sterile alpha motif) domain.,similarity:Contains 2 fibronectin type-III domains.,subunit:Interacts with the src family kinase, p59-Fyn, through the major phosphorylation site at position Tyr-602. Interacts with NGEF/ephexin-1.,tissue specificity:Ubiquitous.,		

Validation Data



Western Blot analysis using EphA4 Monoclonal Antibody against truncated Trx-EphA4 recombinant protein (1) and truncated GST-EphA4(aa777-986) recombinant protein (2).

## | Contact information

Orders: order@immunoway.com  
Support: tech@immunoway.com  
Telephone: 877-594-3616 (Toll Free), 408-747-0185  
Website: <http://www.immunoway.com>  
Address: 2200 Ringwood Ave San Jose, CA 95131 USA



Please scan the QR code  
to access additional  
product information:

**EphA4 Mouse mAb**

---

For Research Use Only. Not for Use in Diagnostic Procedures.

[Antibody](#) | [ELISA Kits](#) | [Protein](#) | [Reagents](#)