

## Emt Mouse mAb

CatalogNo: YM0218

### Key Features

#### Host Species

- Mouse

#### Reactivity

- Human

#### Applications

- WB,IF,FC,ELISA

#### MW

- 72kD (Calculated)

### Recommended Dilution Ratios

**WB 1:500-1:2000**

**IF 1:200-1:1000**

**Flow Cyt 1:200-1:400**

**ELISA 1:10000**

**Not yet tested in other applications.**

### Storage

#### Storage\*

-15°C to -25°C/1 year(Do not lower than -25°C)

#### Formulation

Liquid in PBS containing 50% glycerol, 0.5% BSA and 0.02% sodium azide.

### Basic Information

#### Clonality

Monoclonal

### Immunogen Information

#### Immunogen

Purified recombinant fragment of human Emt expressed in E. Coli.

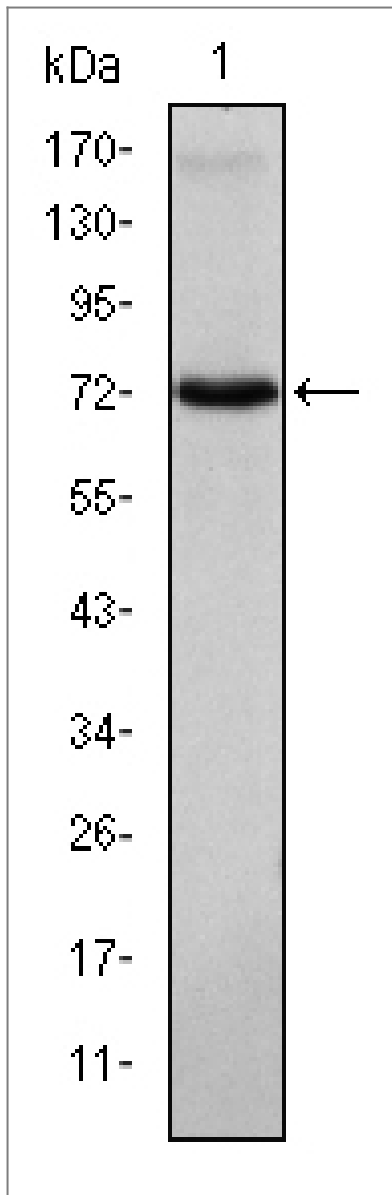
#### Specificity

Emt Monoclonal Antibody detects endogenous levels of Emt protein.

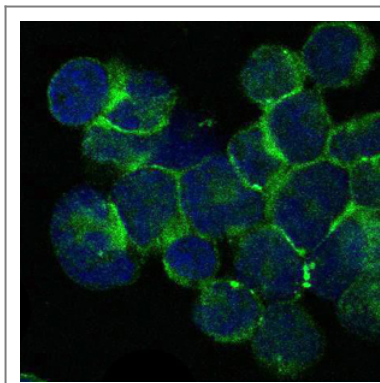
### Target Information

Gene name	ITK EMT LYK		
Protein Name	Tyrosine-protein kinase ITK/TSK		
	Organism	Gene ID	UniProt ID
	Human	<a href="#">3702;</a>	<a href="#">Q08881;</a>
Cellular Localization	Cytoplasm . Nucleus . Localizes in the vicinity of cell surface receptors in the plasma membrane after receptor stimulation.		
Tissue specificity	T-cell lines and natural killer cell lines.		
Function	Catalytic activity:ATP + a [protein]-L-tyrosine = ADP + a [protein]-L-tyrosine phosphate.,cofactor:Binds 1 zinc ion per subunit.,Function:Plays a role in T-cell proliferation and differentiation.,induction:By interleukin-2.,similarity:Belongs to the protein kinase superfamily. Tyr protein kinase family. TEC subfamily.,similarity:Contains 1 Btk-type zinc finger.,similarity:Contains 1 PH domain.,similarity:Contains 1 protein kinase domain.,similarity:Contains 1 SH2 domain.,similarity:Contains 1 SH3 domain.,subcellular location:Localizes to cell surface receptors in the plasma membrane after stimulation with respective receptors (TCR, CD28, CD2) in T-cells.,tissue specificity:T-cell lines and natural killer cell lines.,		

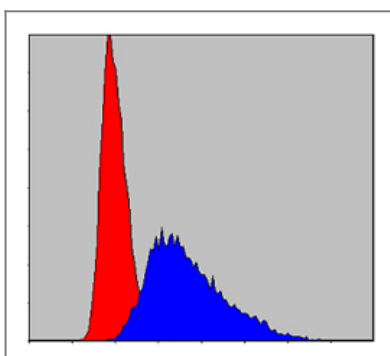
## | Validation Data



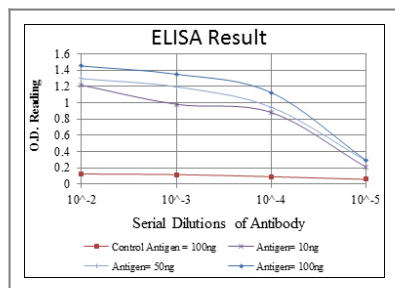
Western Blot analysis using Emt Monoclonal Antibody against Jurkat cell lysate.



Immunofluorescence analysis of Jurkat cells using Emt Monoclonal Antibody (green). Blue: DRAQ5 fluorescent DNA dye.



Flow cytometric analysis of Jurkat cells using Emt Monoclonal Antibody (blue) and negative control (red).



## Contact information

Orders: [order@immunoway.com](mailto:order@immunoway.com)  
 Support: [tech@immunoway.com](mailto:tech@immunoway.com)  
 Telephone: 877-594-3616 (Toll Free), 408-747-0185  
 Website: <http://www.immunoway.com>  
 Address: 2200 Ringwood Ave San Jose, CA 95131 USA



Please scan the QR code to access additional product information:  
**Emt Mouse mAb**

For Research Use Only. Not for Use in Diagnostic Procedures.

[Antibody](#) | [ELISA Kits](#) | [Protein](#) | [Reagents](#)