

EGR1 Mouse mAb

CatalogNo: YM0212

Key Features

Host Species

- Mouse

Reactivity

- Human

Applications

- WB,ELISA

MW

- 78kD (Calculated)

Recommended Dilution Ratios

WB 1:500-1:2000

ELISA 1:10000

Not yet tested in other applications.

Storage

Storage* -15°C to -25°C/1 year(Do not lower than -25°C)

Formulation Liquid in PBS containing 50% glycerol, 0.5% BSA and 0.02% sodium azide.

Basic Information

Clonality Monoclonal

Immunogen Information

Immunogen Purified recombinant fragment of human Egr-1 (aa282-433) expressed in E. Coli.

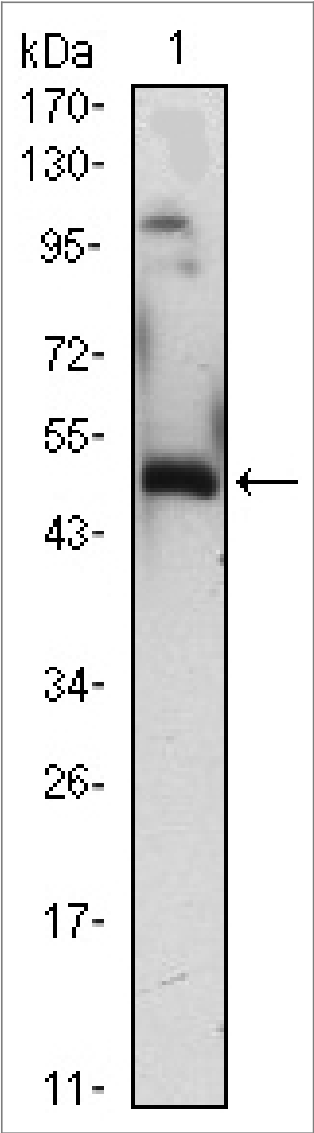
Specificity Egr-1 Monoclonal Antibody detects endogenous levels of Egr-1 protein.

Target Information

Gene name EGR1

Protein Name	Early growth response protein 1		
	Organism	Gene ID	UniProt ID
	Human	1958 ;	P18146 ;
	Mouse		P08046 ;
Cellular Localization	Nucleus . Cytoplasm .		
Tissue specificity	Detected in neutrophils (at protein level).		
Function	Function:Transcriptional regulator. Recognizes and binds to the DNA sequence 5'-CGCCCCGC-3'(EGR-site). Activates the transcription of target genes whose products are required for mitogenesis and differentiation.,induction:By growth factors.,similarity:Belongs to the EGR C2H2-type zinc-finger protein family.,similarity:Contains 3 C2H2-type zinc fingers.,		

| Validation Data



Western Blot analysis using Egr-1 Monoclonal Antibody against EGR1-hlgGfc transfected HEK293 (1)cell lysate.

| Contact information

Orders: order@immunoway.com
Support: tech@immunoway.com
Telephone: 877-594-3616 (Toll Free), 408-747-0185
Website: <http://www.immunoway.com>
Address: 2200 Ringwood Ave San Jose, CA 95131 USA



Please scan the QR code
to access additional
product information:
EGR1 Mouse mAb

For Research Use Only. Not for Use in Diagnostic Procedures.

[Antibody](#) | [ELISA Kits](#) | [Protein](#) | [Reagents](#)