

E2A Mouse mAb

CatalogNo: YM0204

Key Features

Host Species

- Mouse

Reactivity

- Human

Applications

- WB,FC,ELISA

MW

- 68kD (Calculated)

Storage

Storage* -15°C to -25°C/1 year(Do not lower than -25°C)

Formulation Liquid in PBS containing 50% glycerol, 0.5% BSA and 0.02% sodium azide.

Recommended Dilution Ratios

WB 1:500-1:2000

Flow Cyt 1:200-1:400

ELISA 1:10000

Not yet tested in other applications.

Basic Information

Clonality Monoclonal

Clone Number 3G8

Immunogen Information

Immunogen Purified recombinant fragment of human E2A expressed in E. Coli.

Specificity E2A Monoclonal Antibody detects endogenous levels of E2A protein.

Target Information

Gene name TCF3

Protein Name Transcription factor E2-alpha

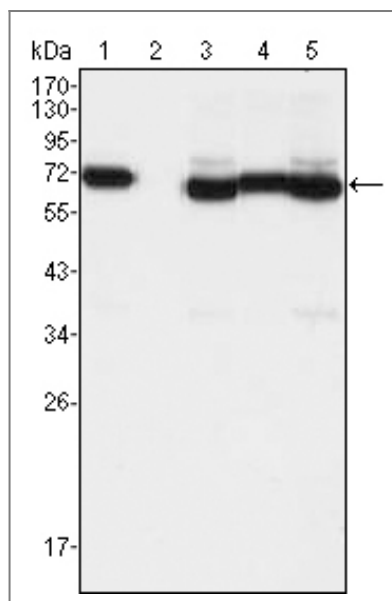
Organism	Gene ID	UniProt ID
Human	6929 ;	P15923 ;
Mouse		P15806 ;

Cellular Localization Nucleus .

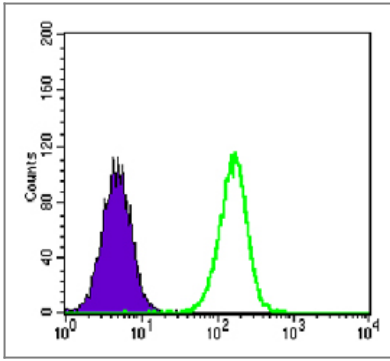
Tissue specificity Lymphoma, Muscle, PCR rescued clones,

Function Disease: Chromosomal aberrations involving TCF3 are cause of forms of pre-B-cell acute lymphoblastic leukemia (B-ALL). Translocation t(1;19)(q23;p13.3) with PBX1; Translocation t(17;19)(q22;p13.3) with HLF. Inversion inv(19)(p13;q13) with TFPT. Function: Heterodimers between TCF3 and tissue-specific basic helix-loop-helix (bHLH) proteins play major roles in determining tissue-specific cell fate during embryogenesis, like muscle or early B-cell differentiation. Dimers bind DNA on E-box motifs: 5'-CANNTG-3'. Binds to the kappa-E2 site in the kappa immunoglobulin gene enhancer. PTM: Phosphorylated following NGF stimulation. Similarity: Contains 1 basic helix-loop-helix (bHLH) domain. Subunit: Efficient DNA binding requires dimerization with another bHLH protein. Forms a heterodimer with ASH1 and TWIST2. Isoform E12 interacts with GRIPE and FIGLA (By similarity). Interacts with PTF1A and TGFB1I1. Component of a nuclear TAL-1 complex composed at least of CBFA2T3, LDB1, TAL1 and TCF3 (By similarity). Interacts with UBE2L.

Validation Data



Western Blot analysis using E2A Monoclonal Antibody against A549 (1), A431 (2), HeLa (3), PANC-1 (4) and PC-3 (5) cell lysate.



Flow cytometric analysis of A549 cells using E2A Monoclonal Antibody (green) and negative control (purple).

Contact information

Orders: order@immunoway.com
Support: tech@immunoway.com
Telephone: 877-594-3616 (Toll Free), 408-747-0185
Website: <http://www.immunoway.com>
Address: 2200 Ringwood Ave San Jose, CA 95131 USA



Please scan the QR code to access additional product information:
E2A Mouse mAb

For Research Use Only. Not for Use in Diagnostic Procedures.

[Antibody](#) | [ELISA Kits](#) | [Protein](#) | [Reagents](#)