

## DDR2 Mouse mAb

CatalogNo: YM0195

### Key Features

#### Host Species

- Mouse

#### Reactivity

- Human

#### Applications

- WB,IHC,IF,ELISA

#### MW

- 97kD (Calculated)

### Recommended Dilution Ratios

**WB 1:500-1:2000**

**IHC 1:200-1:1000**

**IF 1:200-1:1000**

**ELISA 1:10000**

**Not yet tested in other applications.**

### Storage

#### Storage\*

-15°C to -25°C/1 year(Do not lower than -25°C)

#### Formulation

Liquid in PBS containing 50% glycerol, 0.5% BSA and 0.02% sodium azide.

### Basic Information

#### Clonality

Monoclonal

### Immunogen Information

#### Immunogen

Purified recombinant fragment of human DDR2 expressed in E. Coli.

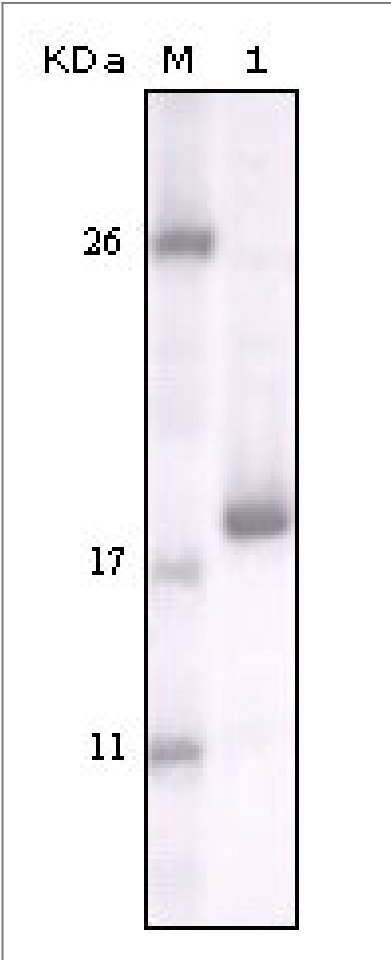
#### Specificity

DDR2 Monoclonal Antibody detects endogenous levels of DDR2 protein.

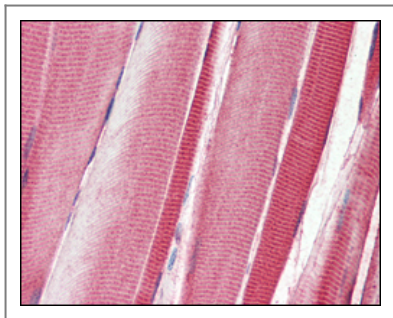
### Target Information

Gene name	DDR2 NTRKR3 TKT TYRO10		
Protein Name	Discoidin domain-containing receptor 2		
	Organism	Gene ID	UniProt ID
	Human	<a href="#">4921;</a>	<a href="#">Q16832;</a>
Cellular Localization	Cell membrane ; Single-pass type I membrane protein .		
Tissue specificity	Detected in osteocytes, osteoblastic cells in subchondral bone, bone lining cells, tibia and cartilage (at protein level). Detected at high levels in heart and lung, and at low levels in brain, placenta, liver, skeletal muscle, pancreas, and kidney.		
Function	Catalytic activity:ATP + a [protein]-L-tyrosine = ADP + a [protein]-L-tyrosine phosphate.,Function:This tyrosine kinase receptor for fibrillar collagen mediates fibroblast migration and proliferation. Contributes to cutaneous wound healing.,similarity:Belongs to the protein kinase superfamily. Tyr protein kinase family. Insulin receptor subfamily.,similarity:Contains 1 F5/8 type C domain.,similarity:Contains 1 protein kinase domain.,tissue specificity:The major 10 kDa transcript is expressed in high levels in heart and lung, less in brain, placenta, liver, skeletal muscle, pancreas, and kidney.,		

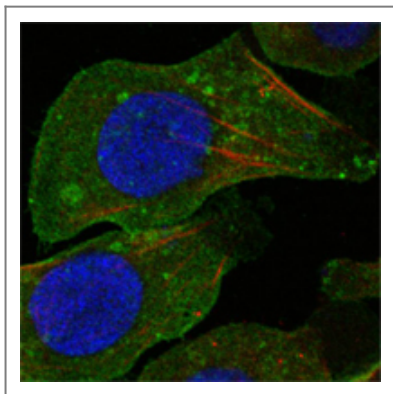
Validation Data



Western Blot analysis using DDR2 Monoclonal Antibody against truncated DDR2 recombinant protein.



Immunohistochemistry analysis of paraffin-embedded human skeletal muscle tissues with AEC staining using DDR2 Monoclonal Antibody.



Confocal immunofluorescence analysis of A549 cells using DDR2 Monoclonal Antibody (green). Red: Actin filaments have been labeled with DY-554 phalloidin. Blue: DRAQ5 fluorescent DNA dye.

## | Contact information

Orders: [order@immunoway.com](mailto:order@immunoway.com)  
Support: [tech@immunoway.com](mailto:tech@immunoway.com)  
Telephone: 877-594-3616 (Toll Free), 408-747-0185  
Website: <http://www.immunoway.com>  
Address: 2200 Ringwood Ave San Jose, CA 95131 USA



Please scan the QR code to access additional product information:  
**DDR2 Mouse mAb**

For Research Use Only. Not for Use in Diagnostic Procedures.

[Antibody](#) | [ELISA Kits](#) | [Protein](#) | [Reagents](#)