

## Csk Mouse mAb

CatalogNo: YM0170

### | Key Features

#### Host Species

- Mouse

#### Reactivity

- Human, Mouse, Rat, Monkey

#### Applications

- WB, IF, FC, ELISA

#### MW

- 51kD (Calculated)

### | Recommended Dilution Ratios

**WB 1:500-1:2000**

**IF 1:200-1:1000**

**Flow Cyt 1:200-1:400**

**ELISA 1:10000**

**Not yet tested in other applications.**

### | Storage

#### Storage\*

-15°C to -25°C/1 year(Do not lower than -25°C)

#### Formulation

Liquid in PBS containing 50% glycerol, 0.5% BSA and 0.02% sodium azide.

### | Basic Information

#### Clonality

Monoclonal

### | Immunogen Information

#### Immunogen

Purified recombinant fragment of human Csk expressed in E. Coli.

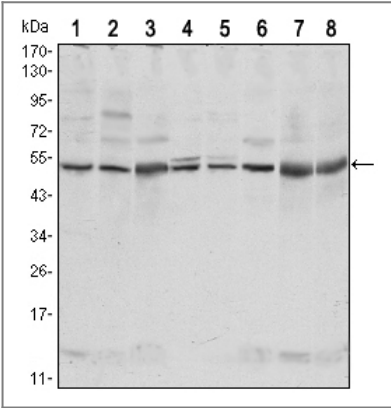
#### Specificity

Csk Monoclonal Antibody detects endogenous levels of Csk protein.

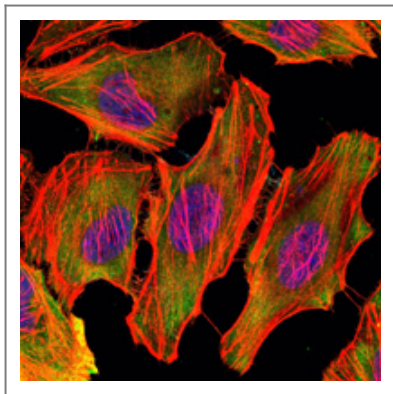
### | Target Information

Gene name	CSK		
Protein Name	Tyrosine-protein kinase CSK		
	Organism	Gene ID	UniProt ID
	Human	<a href="#">1445;</a>	<a href="#">P41240;</a>
	Mouse	<a href="#">12988;</a>	<a href="#">P41241;</a>
	Rat	<a href="#">315707;</a>	<a href="#">P32577;</a>
Cellular Localization	Cytoplasm . Cell membrane . Mainly cytoplasmic, also present in lipid rafts. .		
Tissue specificity	Expressed in lung and macrophages.		
Function	Catalytic activity:ATP + a [protein]-L-tyrosine = ADP + a [protein]-L-tyrosine phosphate.,Function:Specifically phosphorylates 'Tyr-504' on LCK, which acts as a negative regulatory site. Can also act on the LYN and FYN kinases.,PTM:Autophosphorylation of Tyr-304 occurs only at abnormally high CSK concentrations in vitro.,similarity:Belongs to the protein kinase superfamily. Tyr protein kinase family.,similarity:Belongs to the protein kinase superfamily. Tyr protein kinase family. CSK subfamily.,similarity:Contains 1 protein kinase domain.,similarity:Contains 1 SH2 domain.,similarity:Contains 1 SH3 domain.,subcellular location:Mainly cytoplasmic, also present in lipid rafts.,subunit:Interacts with PTPN8 (By similarity). Interacts with phosphorylated SIT1, PAG1, LIME1 and TGFB1I1.,tissue specificity:Expressed in lung and macrophages.,		

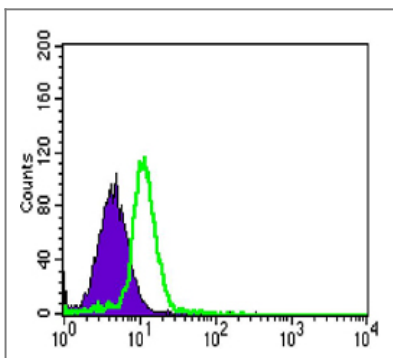
Validation Data



Western Blot analysis using Csk Monoclonal Antibody against NIH/3T3 (1),HeLa (2),COS7 (3), Jurkat (4), Raw246.7 (5), A549 (6), HL-60 (7) and PC-12 (8) cell lysate.



Immunofluorescence analysis of U251 cells using Csk Monoclonal Antibody (green). Blue: DRAQ5 fluorescent DNA dye. Red: Actin filaments have been labeled with Alexa Fluor-555 phalloidin



Flow cytometric analysis of HL-60 cells using Csk Monoclonal Antibody (green) and negative control (purple).

## Contact information

Orders: [order@immunoway.com](mailto:order@immunoway.com)  
 Support: [tech@immunoway.com](mailto:tech@immunoway.com)  
 Telephone: 877-594-3616 (Toll Free), 408-747-0185  
 Website: <http://www.immunoway.com>  
 Address: 2200 Ringwood Ave San Jose, CA 95131 USA



Please scan the QR code  
 to access additional  
 product information:  
**Csk Mouse mAb**

For Research Use Only. Not for Use in Diagnostic Procedures.

[Antibody](#) | [ELISA Kits](#) | [Protein](#) | [Reagents](#)