

## Cripto Mouse mAb

CatalogNo: YM0165

### Key Features

#### Host Species

- Mouse

#### Reactivity

- Human

#### Applications

- WB,ELISA

#### MW

- 21kD (Calculated)

### Recommended Dilution Ratios

**WB 1:500-1:2000**

**ELISA 1:10000**

**Not yet tested in other applications.**

### Storage

**Storage\*** -15°C to -25°C/1 year(Do not lower than -25°C)

**Formulation** Liquid in PBS containing 50% glycerol, 0.5% BSA and 0.02% sodium azide.

### Basic Information

**Clonality** Monoclonal

### Immunogen Information

**Immunogen** Purified recombinant fragment of human Cripto expressed in E. Coli.

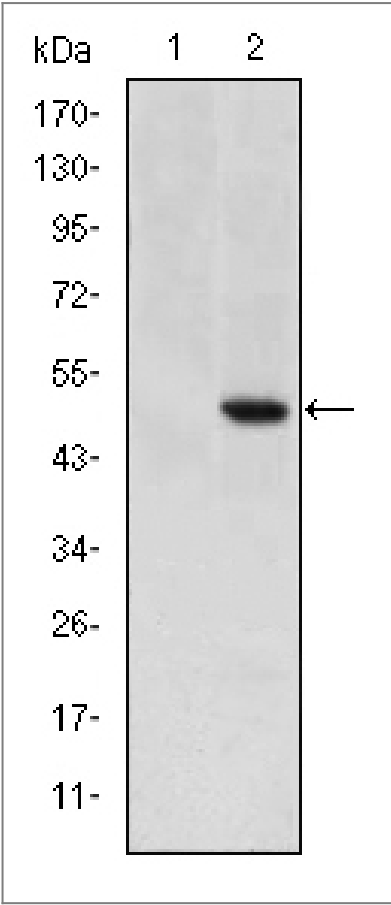
**Specificity** Cripto Monoclonal Antibody detects endogenous levels of Cripto protein.

### Target Information

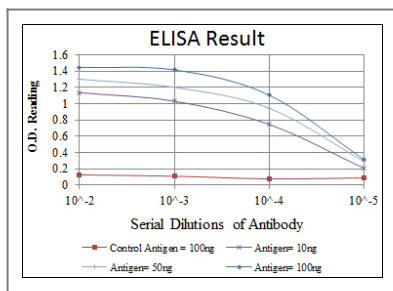
**Gene name** TDGF1

<b>Protein Name</b>	Teratocarcinoma-derived growth factor 1		
	<b>Organism</b>	<b>Gene ID</b>	<b>UniProt ID</b>
	Human	<a href="#">6997</a> ;	<a href="#">P13385</a> ;
	Mouse		<a href="#">P51865</a> ;
<b>Cellular Localization</b>	Cell membrane ; Lipid-anchor, GPI-anchor . Secreted . Released from the cell membrane by GPI cleavage. .		
<b>Tissue specificity</b>	Preferentially expressed in gastric and colorectal carcinomas than in their normal counterparts. Expressed in breast and lung.		
<b>Function</b>	Function:Could play a role in the determination of the epiblastic cells that subsequently give rise to the mesoderm.,similarity:Contains 1 EGF-like domain.,tissue specificity:Preferentially expressed in gastric and colorectal carcinomas than in their normal counterparts.,		

Validation Data



Western Blot analysis using Cripto Monoclonal Antibody against HEK293 (1) and TDGF1-hlgGfc transfected HEK293 (2) cell lysate.



## Contact information

Orders: [order@immunoway.com](mailto:order@immunoway.com)  
 Support: [tech@immunoway.com](mailto:tech@immunoway.com)  
 Telephone: 877-594-3616 (Toll Free), 408-747-0185  
 Website: <http://www.immunoway.com>  
 Address: 2200 Ringwood Ave San Jose, CA 95131 USA



Please scan the QR code  
 to access additional  
 product information:  
**Cripto Mouse mAb**

For Research Use Only. Not for Use in Diagnostic Procedures.

[Antibody](#) | [ELISA Kits](#) | [Protein](#) | [Reagents](#)