

Cortactin Mouse mAb

CatalogNo: YM0161

Orthogonal Validated 

Key Features

Host Species

- Mouse

Reactivity

- Human, Mouse

Applications

- WB, IHC, IF, ELISA

MW

- 62kD (Calculated)

Recommended Dilution Ratios

WB 1:500-2000**IHC 1:200-400****IF/ICC 1:200-400****ELISA 1:5000-20000**

Storage

Storage* -15°C to -25°C/1 year (Do not lower than -25°C)**Formulation** Liquid in PBS containing 50% glycerol, 0.5% BSA and 0.02% sodium azide.

Basic Information

Clonality Monoclonal

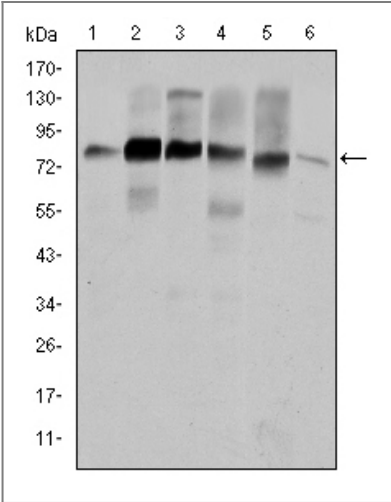
Immunogen Information

Immunogen Purified recombinant fragment of human Cortactin expressed in E. Coli.**Specificity** Cortactin Monoclonal Antibody detects endogenous levels of Cortactin protein.

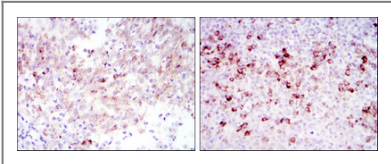
Target Information

Gene name	CTTN		
Protein Name	Src substrate cortactin		
	Organism	Gene ID	UniProt ID
	Human	2017;	Q14247;
	Mouse	13043;	Q60598;
Cellular Localization	Cytoplasm, cytoskeleton . Cell projection, lamellipodium . Cell projection, ruffle. Cell projection, dendrite . Cell projection . Cell membrane ; Peripheral membrane protein ; Cytoplasmic side . Cell projection, podosome . Cell junction . Cell junction, focal adhesion . Membrane, clathrin-coated pit . Cell projection, dendritic spine . Cytoplasm, cell cortex . Colocalizes transiently with PTK2/FAK1 at focal adhesions (By similarity). Associated with membrane ruffles and lamellipodia. In the presence of CTTNBP2NL, colocalizes with stress fibers (By similarity). In the presence of CTTNBP2, localizes at the cell cortex (By similarity). In response to neuronal activation by glutamate, redistributes from dendritic spines to the dendritic shaft (By similarity). Colocalizes with DNM2 at the basis of filopodia in hippocampus neuron growth zones (By similarity). .		
Tissue specificity	Coronary artery,Epithelium,Mammary gland,Placenta,Platelet,Testis,		
Function	Function:May contribute to the organization of cell structure. The SH3 motif may function as a binding region to cytoskeleton. Tyrosine phosphorylation in transformed cells may contribute to cellular growth regulation and transformation.,online information:Cortactin entry,similarity:Contains 1 SH3 domain.,similarity:Contains 7 cortactin repeats.,subcellular location:Associated with membrane ruffles and lamellipodia.,subunit:Interacts with SHANK2 and SHANK3 via its SH2 domain. Also interacts with FGD1 (By similarity). Interacts with PLXDC2.,		

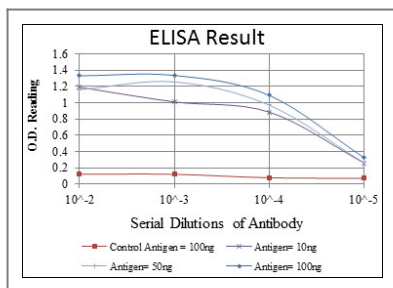
Validation Data



Western Blot analysis using Cortactin Monoclonal Antibody against HeLa (1), A431 (2), MCF-7 (3), SR-BR-3 (4), HepG2 (5) and NIH/3T3 (6) cell lysate.



Immunohistochemistry analysis of paraffin-embedded cervical cancer tissues (left) and tonsil tissues (right) with DAB staining using Cortactin Monoclonal Antibody.



Contact information

Orders: order@immunoway.com
 Support: tech@immunoway.com
 Telephone: 877-594-3616 (Toll Free), 408-747-0185
 Website: <http://www.immunoway.com>
 Address: 2200 Ringwood Ave San Jose, CA 95131 USA



Please scan the QR code
 to access additional
 product information:
**Cortactin Mouse
 mAb**

For Research Use Only. Not for Use in Diagnostic Procedures.

[Antibody](#) | [ELISA Kits](#) | [Protein](#) | [Reagents](#)