

## CIB1 Mouse mAb

CatalogNo: YM0155

### | Key Features

#### Host Species

- Mouse

#### Reactivity

- Human

#### Applications

- WB,IHC,IF,ELISA

#### MW

- 22kD (Calculated)

### | Recommended Dilution Ratios

**WB 1:500-1:2000**

**IHC 1:200-1:1000**

**ELISA 1:10000**

**IF 1:50-200**

### | Storage

**Storage\*** -15°C to -25°C/1 year(Do not lower than -25°C)

**Formulation** Liquid in PBS containing 50% glycerol, 0.5% BSA and 0.02% sodium azide.

### | Basic Information

**Clonality** Monoclonal

**Clone Number** 1E12

### | Immunogen Information

**Immunogen** Purified recombinant fragment of CIB1 expressed in E. Coli.

**Specificity** CIB1 Monoclonal Antibody detects endogenous levels of CIB1 protein.

## | Target Information

**Gene name** CIB1

**Protein Name** Calcium and integrin-binding protein 1

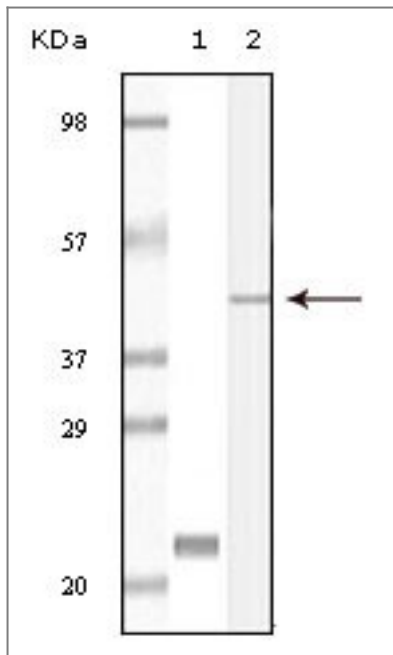
Organism	Gene ID	UniProt ID
Human	<a href="#">10519</a> ;	<a href="#">Q99828</a> ;
Mouse		<a href="#">Q9Z0F4</a> ;

**Cellular Localization** Membrane; Lipid-anchor. Cell membrane, sarcolemma. Cell membrane. Apical cell membrane. Cell projection, ruffle membrane. Cell projection, filopodium tip. Cell projection, growth cone . Cell projection, lamellipodium . Cytoplasm. Cytoplasm, cytoskeleton. Cytoplasm, cytoskeleton, microtubule organizing center, centrosome. Cytoplasm, perinuclear region. Nucleus . Cell projection, neuron projection . Perikaryon . Colocalized with PPP3R1 at the cell membrane of cardiomyocytes in the hypertrophic heart (By similarity). Colocalized with NBR1 to the perinuclear region. Colocalizes with TAS1R2 in apical regions of taste receptor cells. Colocalized with RAC3 in the perinuclear area and at the cell periphery. Colocalized with PAK1 within membrane ruffles during cell spreading upon readhesion to fibronectin. Redistributed to the cytoskeleton upon platelet aggregation. Translocates from the cytosol to the plasma membrane in a calcium-dependent manner. Colocalized with PLK3 at centrosomes in ductal breast carcinoma cells. .; [Isoform 2]: Cytoplasm, perinuclear region . Golgi apparatus, trans-Golgi network .

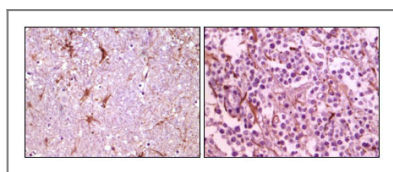
**Tissue specificity** Ubiquitously expressed. Expressed in the epidermis, hair follicles and keratinocytes (PubMed:30068544). Detected in platelets and in cell lines of megakaryocytic and erythrocytic lineages. Both isoform 1 and isoform 2 are detected in various cancer cell lines, with isoform 2 being the predominant form (at protein level).

**Function** Function:May convert the inactive conformation of integrin alpha-IIb/beta3 to an active form through the binding to the integrin cytoplasmic domain.,similarity:Contains 2 EF-hand domains.,subunit:Monomer. Interacts with the heterodimeric integrin alpha-IIb/beta3. Interacts with the protein kinases PLK2/SNK and with the region immediately upstream of the kinase domain of DNA-PK. Interacts with PSEN2. Interacts with MYO1C.,tissue specificity:Ubiquitous.,

## | Validation Data



Western Blot analysis using CIB1 Monoclonal Antibody against truncated CIB1 recombinant protein (1) and A431 cell lysate (2).



Immunohistochemistry analysis of paraffin-embedded human thalamus (left) and glioma (right) tissue, showing membrane localization with DAB staining using CIB1 Monoclonal Antibody.

## Contact information

Orders: [order@immunoway.com](mailto:order@immunoway.com)  
 Support: [tech@immunoway.com](mailto:tech@immunoway.com)  
 Telephone: 877-594-3616 (Toll Free), 408-747-0185  
 Website: <http://www.immunoway.com>  
 Address: 2200 Ringwood Ave San Jose, CA 95131 USA



Please scan the QR code to access additional product information:  
**CIB1 Mouse mAb**

For Research Use Only. Not for Use in Diagnostic Procedures.

[Antibody](#) | [ELISA Kits](#) | [Protein](#) | [Reagents](#)