

Chitotriosidase Mouse mAb

CatalogNo: YM0152

Key Features

Host Species

- Mouse

Reactivity

- Human

Applications

- WB,ELISA

MW

- 52kD (Calculated)

Recommended Dilution Ratios

WB 1:500-1:2000

ELISA 1:10000

Not yet tested in other applications.

Storage

Storage* -15°C to -25°C/1 year(Do not lower than -25°C)

Formulation Liquid in PBS containing 50% glycerol, 0.5% BSA and 0.02% sodium azide.

Basic Information

Clonality Monoclonal

Immunogen Information

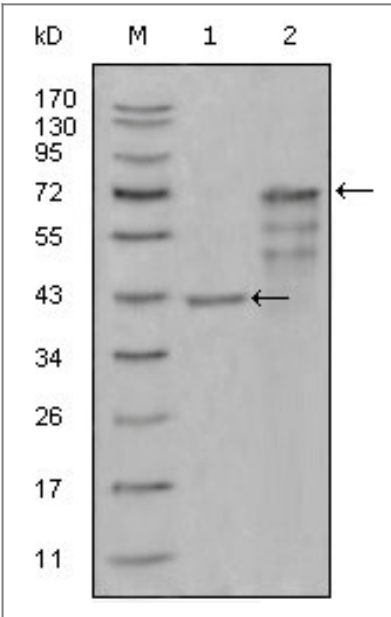
Immunogen Purified recombinant fragment of Chitotriosidase (aa22-137) expressed in E. Coli.

Specificity Chitotriosidase Monoclonal Antibody detects endogenous levels of Chitotriosidase protein.

Target Information

Gene name	CHIT1		
Protein Name	Chitotriosidase-1		
	Organism	Gene ID	UniProt ID
	Human	1118 ;	Q13231 ;
	Mouse		Q9D7Q1 ;
Cellular Localization	Secreted. Lysosome. A small proportion is lysosomal.		
Tissue specificity	Detected in spleen. Secreted by cultured macrophages.		
Function	Catalytic activity:Random hydrolysis of N-acetyl-beta-D-glucosaminide (1->4)-beta-linkages in chitin and chitodextrins.,Disease:Very high plasma levels of CHIT1 are found in patients with Gaucher disease type 1 (GD I). This can be used as diagnostic aid and to evaluate the success of treatment. Successful therapy brings the CHIT1 activity levels back to normal.,Function:Degrades chitin and chitotriose. May participate in the defense against nematodes and other pathogens. Isoform 3 has no enzymatic activity.,polymorphism:A 24 bp duplication in exon 10 leads to the activation of an alternative splice site and the production of an inactive protein. About 6% of the population are deficient for CHIT1 activity, while 35% are carriers and show reduced enzyme levels. People with CHIT1 deficiency appear perfectly healthy.,similarity:Belongs to the glycosyl hydrolase 18 family.,similarity:Belongs to the glycosyl hydrolase 18 family. Chitinase class II subfamily.,similarity:Contains 1 chitin-binding type-2 domain.,subcellular location:A small proportion is lysosomal.,subunit:Monomer.,tissue specificity:Detected in spleen. Secreted by cultured macrophages.,		

Validation Data



Western Blot analysis using Chitotriosidase Monoclonal Antibody against truncated Trx-CHIT1 recombinant protein (1) and truncated CHIT1 (aa22-466)-hlgGfc transfected CHO-K1 cell lysate (2).

| Contact information

Orders: order@immunoway.com
Support: tech@immunoway.com
Telephone: 877-594-3616 (Toll Free), 408-747-0185
Website: <http://www.immunoway.com>
Address: 2200 Ringwood Ave San Jose, CA 95131 USA



Please scan the QR code
to access additional
product information:
**Chitotriosidase
Mouse mAb**

For Research Use Only. Not for Use in Diagnostic Procedures.

[Antibody](#) | [ELISA Kits](#) | [Protein](#) | [Reagents](#)