

## Cerberus Mouse mAb

CatalogNo: YM0149

### | Key Features

#### Host Species

- Mouse

#### Reactivity

- Human

#### Applications

- WB,IHC,IF,ELISA

#### MW

- 30kD (Calculated)

### | Recommended Dilution Ratios

**WB 1:500-1:2000**

**IHC 1:200-1:1000**

**ELISA 1:10000**

**IF 1:50-200**

### | Storage

#### Storage\*

-15°C to -25°C/1 year(Do not lower than -25°C)

#### Formulation

Liquid in PBS containing 50% glycerol, 0.5% BSA and 0.02% sodium azide.

### | Basic Information

#### Clonality

Monoclonal

### | Immunogen Information

#### Immunogen

Purified recombinant fragment of human Cerberus expressed in E. Coli.

#### Specificity

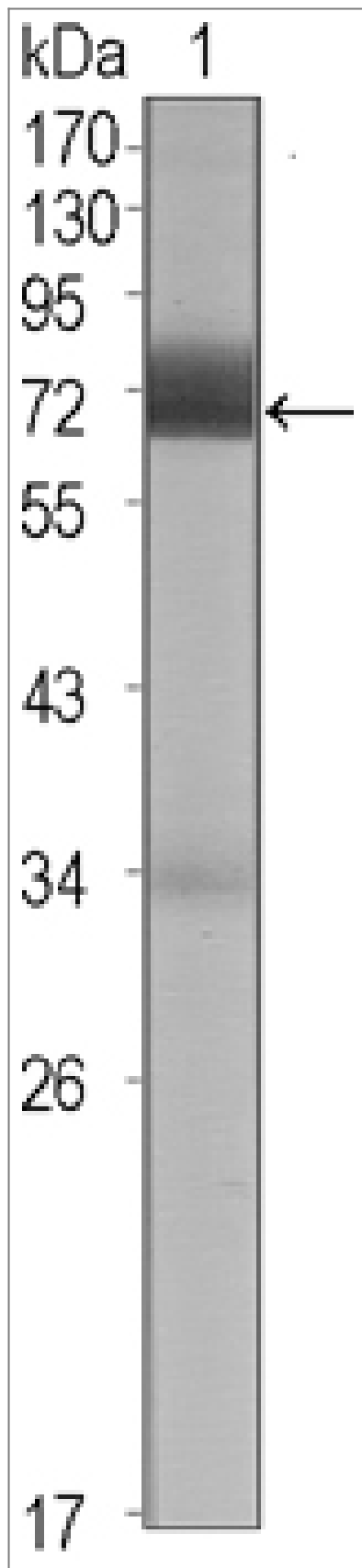
Cerberus Monoclonal Antibody detects endogenous levels of Cerberus protein.

### | Target Information

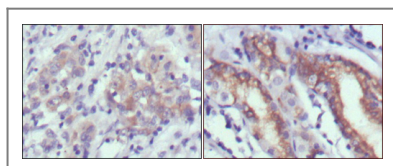
Gene name	CER1		
Protein Name	Cerberus		
	Organism	Gene ID	UniProt ID
	Human	<a href="#">9350</a> ;	<a href="#">O95813</a> ;
Cellular Localization	Secreted .		
Tissue specificity	Blood,PCR rescued clones,		
Function	Function:Cytokine that may play a role in anterior neural induction and somite formation during embryogenesis in part through a BMP-inhibitory mechanism. Can regulate Nodal signaling during gastrulation as well as the formation and patterning of the primitive streak.,PTM:N-glycosylated.,sequence Caution:Translated as Ser.,similarity:Belongs to the DAN family.,similarity:Contains 1 CTCK (C-terminal cystine knot-like) domain.,subunit:Forms monomers and predominantly dimers.,		

---

## | Validation Data



Western Blot analysis using Cerberus Monoclonal Antibody against CER1 (aa18-267)-hIgGfc transfected HEK293 cell lysate (1).



Immunohistochemistry analysis of paraffin-embedded human gastric cancer (left) and normal gastric tissues (right) with DAB staining using Cerberus Monoclonal Antibody.

## | Contact information

Orders: order@immunoway.com  
Support: tech@immunoway.com  
Telephone: 877-594-3616 (Toll Free), 408-747-0185  
Website: <http://www.immunoway.com>  
Address: 2200 Ringwood Ave San Jose, CA 95131 USA



Please scan the QR code  
to access additional  
product information:  
**Cerberus Mouse  
mAb**

---

For Research Use Only. Not for Use in Diagnostic Procedures.

[Antibody](#) | [ELISA Kits](#) | [Protein](#) | [Reagents](#)