

CBX1 Mouse mAb

CatalogNo: YM0097

Key Features

Host Species

- Mouse

Reactivity

- Human,Monkey

Applications

- WB,IF,FC,ELISA

MW

- 21kD (Calculated)

Recommended Dilution Ratios

WB 1:500-1:2000

IF 1:200-1:1000

Flow Cyt 1:200-1:400

ELISA 1:10000

Not yet tested in other applications.

Storage

Storage* -15°C to -25°C/1 year(Do not lower than -25°C)

Formulation Liquid in PBS containing 50% glycerol, 0.5% BSA and 0.02% sodium azide.

Basic Information

Clonality Monoclonal

Clone Number 2D2

Immunogen Information

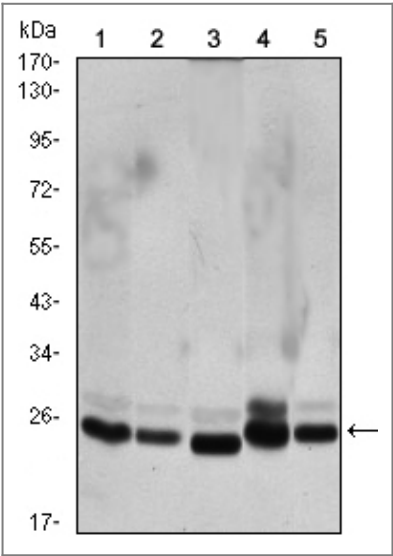
Immunogen Purified recombinant fragment of human CBX1 expressed in E. Coli.

Specificity CBX1 Monoclonal Antibody detects endogenous levels of CBX1 protein.

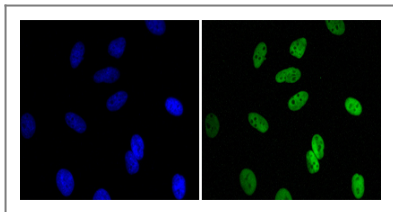
Target Information

Gene name	CBX1		
Protein Name	Chromobox protein homolog 1		
	Organism	Gene ID	UniProt ID
	Human	10951 ;	P83916 ;
	Mouse		P83917 ;
Cellular Localization	Nucleus . Unassociated with chromosomes during mitosis.		
Tissue specificity	Expressed in all adult and embryonic tissues.		
Function	Function:Component of heterochromatin. Recognizes and binds histone H3 tails methylated at 'Lys-9', leading to epigenetic repression. Interaction with lamin B receptor (LBR) can contribute to the association of the heterochromatin with the inner nuclear membrane.,online information:Heterochromatin protein 1 entry,PTM:Not phosphorylated.,similarity:Contains 2 chromo domains.,subcellular location:Unassociated with chromosomes during mitosis.,subunit:Homodimer. Interacts directly with CHAF1A, EMSY, LBR, TIF1/TIF1A and TRIM28/TIF1B PXVXL motif via the chromoshadow domain. Interacts directly with histone H3 methylated at 'Lys-9' via the chromo domain. Interacts with SUV39H1 and SETDB1, SUV420H1 and SUV420H2. Interacts with PRDM6.,tissue specificity:In all adult and embryonic tissues.,		

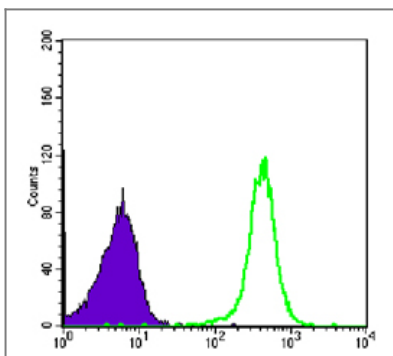
Validation Data



Western Blot analysis using CBX1 Monoclonal Antibody against HeLa (1), COS7 (2), NIH/3T3 (3), A431 (4),and C6 (5) cell lysate.



Immunofluorescence analysis of HeLa cells using CBX1 Monoclonal Antibody (green). Blue: DRAQ5 fluorescent DNA dye.



Flow cytometric analysis of COS7 cells using CBX1 Monoclonal Antibody (green) and negative control (purple).

Contact information

Orders: order@immunoway.com
 Support: tech@immunoway.com
 Telephone: 877-594-3616 (Toll Free), 408-747-0185
 Website: <http://www.immunoway.com>
 Address: 2200 Ringwood Ave San Jose, CA 95131 USA



Please scan the QR code
 to access additional
 product information:
CBX1 Mouse mAb

For Research Use Only. Not for Use in Diagnostic Procedures.

[Antibody](#) | [ELISA Kits](#) | [Protein](#) | [Reagents](#)