

## BDH1 Mouse mAb

CatalogNo: YM0059

### | Key Features

#### Host Species

- Mouse

#### Reactivity

- Human, Mouse

#### Applications

- WB, IHC, IF, ELISA

#### MW

- 38kD (Calculated)

### | Recommended Dilution Ratios

**WB 1:500-1:2000**

**IHC 1:200-1:1000**

**ELISA 1:10000**

**IF 1:50-200**

### | Storage

**Storage\*** -15°C to -25°C/1 year (Do not lower than -25°C)

**Formulation** Liquid in PBS containing 50% glycerol, 0.5% BSA and 0.02% sodium azide.

### | Basic Information

**Clonality** Monoclonal

### | Immunogen Information

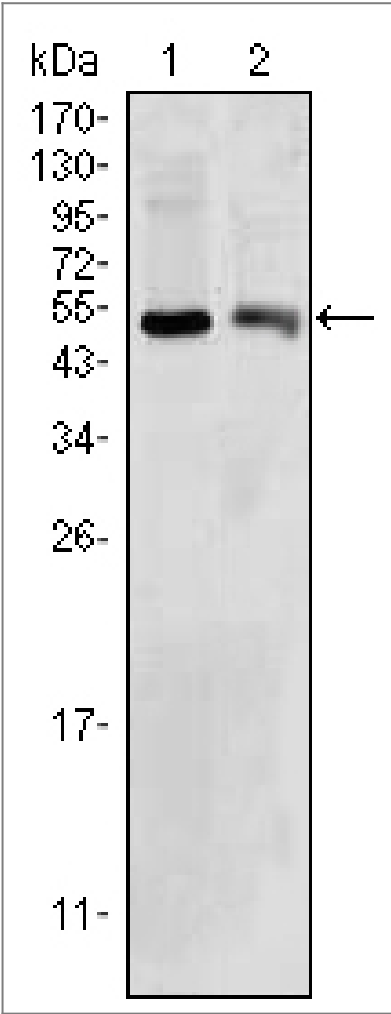
**Immunogen** Purified recombinant fragment of human BDH1 expressed in E. Coli.

**Specificity** BDH1 Monoclonal Antibody detects endogenous levels of BDH1 protein.

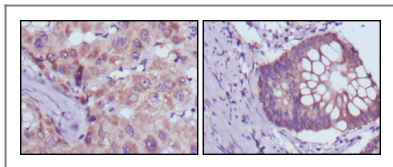
### | Target Information

Gene name	BDH1		
Protein Name	D-beta-hydroxybutyrate dehydrogenase, mitochondrial		
	Organism	Gene ID	UniProt ID
	Human	<a href="#">622;</a>	<a href="#">Q02338;</a>
	Mouse	<a href="#">71911;</a>	<a href="#">Q80XN0;</a>
Cellular Localization	Mitochondrion inner membrane . Mitochondrion matrix .		
Tissue specificity	Heart,Lung,Ovary,		
Function	Catalytic activity:(R)-3-hydroxybutanoate + NAD(+) = acetoacetate + NADH.,enzyme regulation:Requires phosphatidylcholine as an allosteric activator for enzymatic activity.,similarity:Belongs to the short-chain dehydrogenases/reductases (SDR) family.,subunit:Homotetramer.,		

## Validation Data



Western Blot analysis using BDH1 Monoclonal Antibody against HepG2 (1) and NIH/3T3 (2) cell lysate.



Immunohistochemistry analysis of paraffin-embedded human liver cancer (left) and colorectal cancer tissues (right) with DAB staining using BDH1 Monoclonal Antibody.

## | Contact information

Orders: [order@immunoway.com](mailto:order@immunoway.com)  
Support: [tech@immunoway.com](mailto:tech@immunoway.com)  
Telephone: 877-594-3616 (Toll Free), 408-747-0185  
Website: <http://www.immunoway.com>  
Address: 2200 Ringwood Ave San Jose, CA 95131 USA



Please scan the QR code  
to access additional  
product information:  
**BDH1 Mouse mAb**

---

For Research Use Only. Not for Use in Diagnostic Procedures.

[Antibody](#) | [ELISA Kits](#) | [Protein](#) | [Reagents](#)