

## ATF-2 Mouse mAb

CatalogNo: YM0052

### Key Features

#### Host Species

- Mouse

#### Reactivity

- Human, Mouse

#### Applications

- WB, IHC, IF, ELISA

#### MW

- 55kD (Calculated)

### Recommended Dilution Ratios

**WB 1:500-1:2000**

**IHC 1:200-1:1000**

**ELISA 1:10000**

**IF 1:50-200**

### Storage

#### Storage\*

-15°C to -25°C/1 year (Do not lower than -25°C)

#### Formulation

Liquid in PBS containing 50% glycerol, 0.5% BSA and 0.02% sodium azide.

### Basic Information

#### Clonality

Monoclonal

### Immunogen Information

#### Immunogen

Purified recombinant fragment of human ATF-2 expressed in E. Coli.

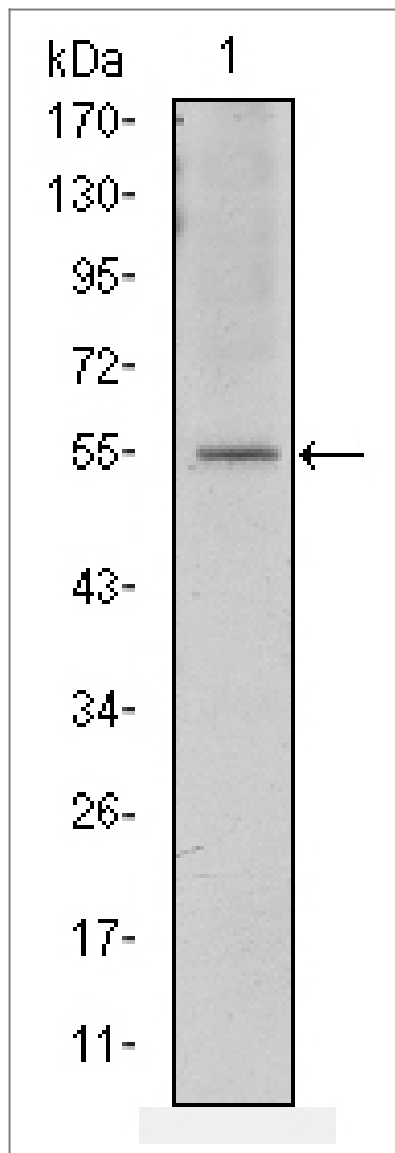
#### Specificity

ATF-2 Monoclonal Antibody detects endogenous levels of ATF-2 protein.

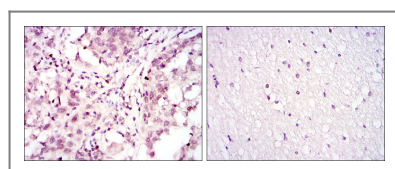
### Target Information

Gene name	ATF2		
Protein Name	Cyclic AMP-dependent transcription factor ATF-2		
	Organism	Gene ID	UniProt ID
	Human	<a href="#">1386</a> ;	<a href="#">P15336</a> ;
	Mouse	<a href="#">11909</a> ;	<a href="#">P16951</a> ;
Cellular Localization	Nucleus. Cytoplasm. Mitochondrion outer membrane. Shuttles between the cytoplasm and the nucleus and heterodimerization with JUN is essential for the nuclear localization. Localization to the cytoplasm is observed under conditions of cellular stress and in disease states. Localizes at the mitochondrial outer membrane in response to genotoxic stress. Phosphorylation at Thr-52 is required for its nuclear localization and negatively regulates its mitochondrial localization. Co-localizes with the MRN complex in the IR-induced foci (IRIF).		
Tissue specificity	Ubiquitously expressed, with more abundant expression in the brain.		
Function	Caution:It is uncertain whether Met-1 or Met-19 is the initiator.,Function:Transcriptional activator, probably constitutive, which binds to the cAMP-responsive element (CRE) (consensus: 5'-GTGACGT[AC][AG]-3'), a sequence present in many viral and cellular promoters. Interaction with JUN redirects JUN to bind to CRES preferentially over the 12-O-tetradecanoylphorbol-13-acetate response elements (TRES) as part of an ATF2-c-Jun complex.,PTM:Phosphorylation of Thr-69 and Thr-71 by MAPK14 causes increased transcriptional activity. Also phosphorylated and activated by JNK.,similarity:Belongs to the bZIP family.,similarity:Belongs to the bZIP family. ATF subfamily.,similarity:Contains 1 bZIP domain.,similarity:Contains 1 C2H2-type zinc finger.,subunit:Binds DNA as a dimer and can form a homodimer in the absence of DNA. Can form a heterodimer with JUN. Interacts with SMAD3 and SMAD4. Binds through its N-terminal region to UTF1 which acts as a coactivator of ATF2 transcriptional activity.,tissue specificity:Abundant expression seen in the brain.,		

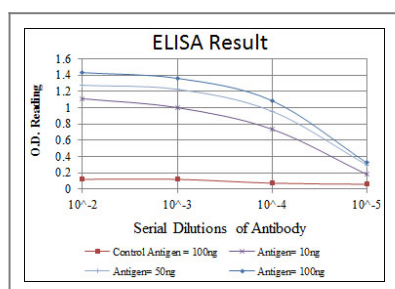
| Validation Data



Western Blot analysis using ATF-2 Monoclonal Antibody against NIH/3T3 cell lysate.



Immunohistochemistry analysis of paraffin-embedded lung cancer (left) and brain tissues (right) with DAB staining using ATF-2 Monoclonal Antibody.



## Contact information

Orders: [order@immunoway.com](mailto:order@immunoway.com)  
Support: [tech@immunoway.com](mailto:tech@immunoway.com)  
Telephone: 877-594-3616 (Toll Free), 408-747-0185  
Website: <http://www.immunoway.com>  
Address: 2200 Ringwood Ave San Jose, CA 95131 USA



Please scan the QR code  
to access additional  
product information:  
**ATF-2 Mouse mAb**

---

For Research Use Only. Not for Use in Diagnostic Procedures.

[Antibody](#) | [ELISA Kits](#) | [Protein](#) | [Reagents](#)