

## ApoA-V Mouse mAb

CatalogNo: YM0033

### Key Features

#### Host Species

- Mouse

#### Reactivity

- Human

#### Applications

- WB,ELISA

#### MW

- 41kD (Calculated)

### Recommended Dilution Ratios

**WB 1:500-1:2000**

**ELISA 1:10000**

**Not yet tested in other applications.**

### Storage

#### Storage\*

-15°C to -25°C/1 year(Do not lower than -25°C)

#### Formulation

Liquid in PBS containing 50% glycerol, 0.5% BSA and 0.02% sodium azide.

### Basic Information

#### Clonality

Monoclonal

### Immunogen Information

#### Immunogen

Purified recombinant fragment of human ApoA-V expressed in E. Coli.

#### Specificity

ApoA-V Monoclonal Antibody detects endogenous levels of ApoA-V protein.

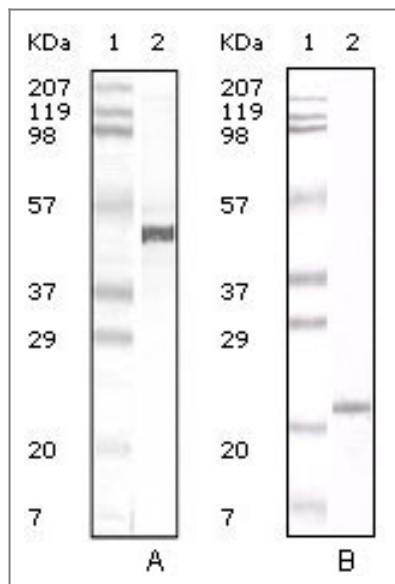
### Target Information

#### Gene name

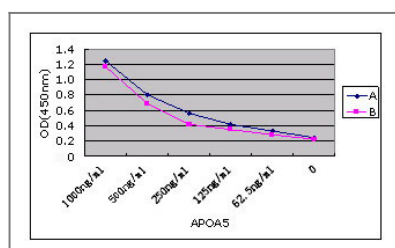
APOA5

Protein Name	Apolipoprotein A-V		
	Organism	Gene ID	UniProt ID
	Human	<a href="#">116519</a> ;	<a href="#">Q6Q788</a> ;
	Mouse		<a href="#">Q8C7G5</a> ;
Cellular Localization	Secreted . Early endosome . Late endosome . Golgi apparatus, trans-Golgi network . In the presence of SORL1, internalized to early endosomes, sorted in a retrograde fashion to late endosomes, from which a portion is sent to lysosomes and degradation, another portion is sorted to the trans-Golgi network. .		
Tissue specificity	Liver and plasma.		
Function	<p>Caution:It is uncertain whether Met-1 or Met-4 is the initiator.,Disease:Defects in APOA5 are a cause of hyperlipoproteinemia type 5 [MIM:144650]. Hyperlipoproteinemia type 5 is characterized by increased amounts of chylomicrons and very low density lipoprotein (VLDL) and decreased low density lipoprotein (LDL) and high density lipoprotein (HDL) in the plasma after a fast. Numerous conditions cause this phenotype, including insulin-dependent diabetes mellitus, contraceptive steroids, alcohol abuse, and glycogen storage disease type 1A (GSD1A) [MIM:232200].,Disease:Defects in APOA5 are a cause of susceptibility to familial hypertriglyceridemia [MIM:145750]. It is a coronary heart disease risk factor. On a regular diet the patient demonstrates increased plasma VLDL. Plasma triglycerides are persistently increased, while plasma cholesterol and phospholipids are usually within normal limits.,Function:Minor apolipoprotein mainly associated with HDL and to a lesser extent with VLDL. May also be associated with chylomicrons. Important determinant of plasma triglyceride (TG) levels by both being a potent stimulator of apo-CII lipoprotein lipase (LPL) TG hydrolysis and a inhibitor of the hepatic VLDL-TG production rate (without affecting the VLDL-apoB production rate) (By similarity). Activates poorly lecithin:cholesterol acyltransferase (LCAT) and does not enhance efflux of cholesterol from macrophages.,induction:Up-regulated by PPARA agonists, which are used clinically to lower serum TG (such as fibrates).,miscellaneous:Induced in early phase of liver regeneration.,polymorphism:Three common alleles are known: allele APOA5*1, APOA5*2 and APOA5*3. The APOA5*2 haplotype, which consists of 3 non-coding SNPs, is present in approximately 16% of Caucasians and is associated with increased plasma triglyceride concentrations. APOA5*3 haplotype is defined by the rare Ser-19-Trp substitution. Together, the APOA5*2 and APOA5*3 haplotypes are found in 25 to 50% of African Americans, Hispanics, and Caucasians.,sequence Caution:Translated as Gln.,similarity:Belongs to the apolipoprotein A1/A4/E family.,subunit:Interacts with GPIHBP1.,tissue specificity:Liver.,</p>		

| Validation Data



Western Blot analysis using ApoA-V Monoclonal Antibody against human serum (A) and ApoA-V recombinant protein (B).



## Contact information

Orders: [order@immunoway.com](mailto:order@immunoway.com)  
 Support: [tech@immunoway.com](mailto:tech@immunoway.com)  
 Telephone: 877-594-3616 (Toll Free), 408-747-0185  
 Website: <http://www.immunoway.com>  
 Address: 2200 Ringwood Ave San Jose, CA 95131 USA



Please scan the QR code to access additional product information:  
**ApoA-V Mouse mAb**

For Research Use Only. Not for Use in Diagnostic Procedures.

[Antibody](#) | [ELISA Kits](#) | [Protein](#) | [Reagents](#)