

## ANIB1 Mouse mAb

CatalogNo: YM0025

### | Key Features

#### Host Species

- Mouse

#### Reactivity

- Human

#### Applications

- WB,ELISA

### | Recommended Dilution Ratios

**WB 1:500-1:2000**

**ELISA 1:10000**

**Not yet tested in other applications.**

### | Storage

#### Storage\*

-15°C to -25°C/1 year(Do not lower than -25°C)

#### Formulation

Liquid in PBS containing 50% glycerol, 0.5% BSA and 0.02% sodium azide.

### | Basic Information

#### Clonality

Monoclonal

#### Clone Number

15A3

### | Immunogen Information

#### Immunogen

Purified recombinant fragment of human ANIB1 expressed in E. Coli.

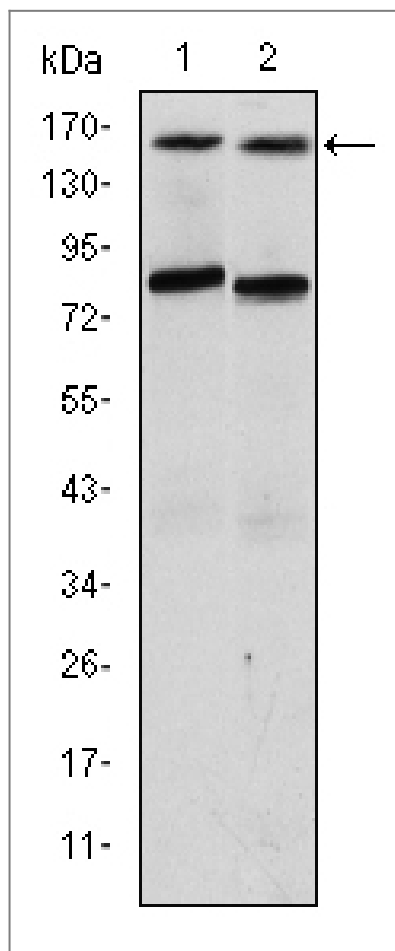
#### Specificity

ANIB1 Monoclonal Antibody detects ANIB1 protein.

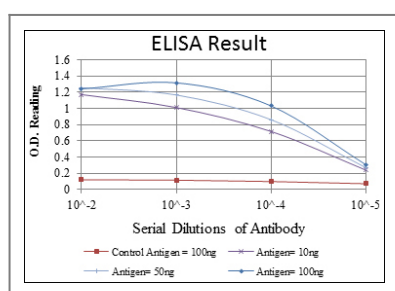
### | Target Information

#### Protein Name

## Validation Data



Western Blot analysis using ANIB1 Monoclonal Antibody against T47D (1) and MCF-7 (2) cell lysate.



## Contact information

Orders: order@immunoway.com  
Support: tech@immunoway.com  
Telephone: 877-594-3616 (Toll Free), 408-747-0185  
Website: <http://www.immunoway.com>  
Address: 2200 Ringwood Ave San Jose, CA 95131 USA



Please scan the QR code to access additional product information:  
**ANIB1 Mouse mAb**

