

AGT Mouse mAb

CatalogNo: YM0016

Key Features

Host Species

- Mouse

Reactivity

- Human

Applications

- WB,ELISA

MW

- 52kD (Calculated)

Storage

Storage* -15°C to -25°C/1 year(Do not lower than -25°C)

Formulation Liquid in PBS containing 50% glycerol, 0.5% BSA and 0.02% sodium azide.

Recommended Dilution Ratios

WB 1:500-1:2000

ELISA 1:10000

Not yet tested in other applications.

Basic Information

Clonality Monoclonal

Clone Number 2D1

Immunogen Information

Immunogen Purified recombinant fragment of human AGT expressed in E. Coli.

Specificity AGT Monoclonal Antibody detects endogenous levels of AGT protein.

Target Information

Gene name AGT

Protein Name Angiotensinogen

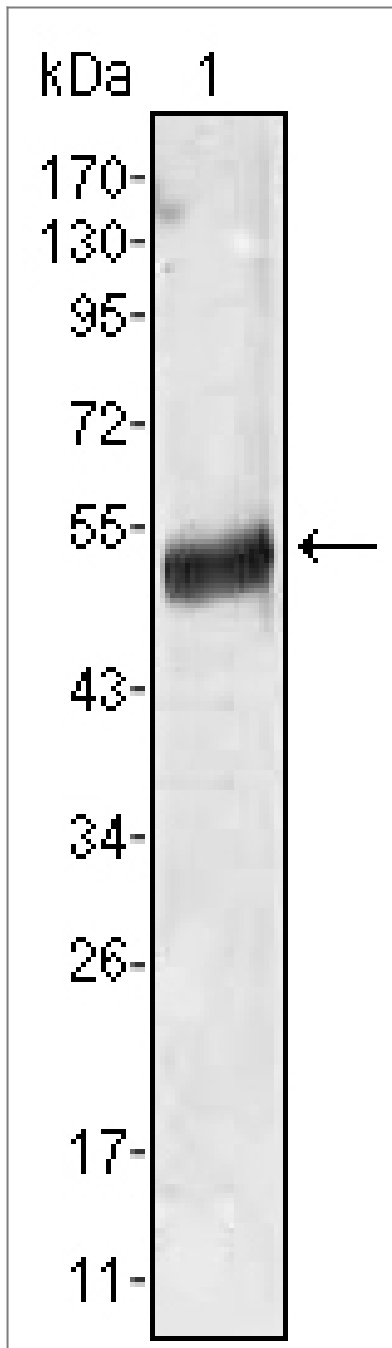
| Organism | Gene ID | UniProt ID |
|----------|-----------------------|--------------------------|
| Human | 183 ; | P01019 ; |
| Mouse | | P11859 ; |

Cellular Localization Secreted.

Tissue specificity Expressed by the liver and secreted in plasma.

Function Caution:It is uncertain whether Met-1 or Met-10 is the initiator.,Disease:Defects in AGT are a cause of renal tubular dysgenesis (RTD) [MIM:267430]. RTD is an autosomal recessive severe disorder of renal tubular development characterized by persistent fetal anuria and perinatal death, probably due to pulmonary hypoplasia from early-onset oligohydramnios (the Potter phenotype).,Disease:Defects in AGT are associated with susceptibility to essential hypertension [MIM:145500]. Hypertension also occurs in 5-7% of all pregnancies where it is a leading cause of maternal, fetal and neonatal morbidity and mortality. Among pregnancy-induced hypertension cases, severe pre-eclampsia [MIM:189800] is characterized by the development of hypertension and proteinuria after the 20th week of pregnancy and is the most distinctive, life-threatening form.,Function:Angiotensin-3 stimulates aldosterone release.,Function:In response to lowered blood pressure, the enzyme renin cleaves angiotensin-1, from angiotensinogen. ACE (angiotensin converting enzyme) then removes a dipeptide to yield the physiologically active peptide angiotensin-2, the most potent pressor substance known, which helps regulate volume and mineral balance of body fluids.,online information:Angiotensin entry,online information:The Singapore human mutation and polymorphism database,PTM:Beta-decarboxylation of Asp-34 in angiotensin-2, by mononuclear leukocytes produces alanine. The resulting peptide form, angiotensin-A, has the same affinity for the AT1 receptor as angiotensin-2, but a higher affinity for the AT2 receptor.,similarity:Belongs to the serpin family.,subunit:During pregnancy, exists as a disulfide-linked 2:2 heterotetramer with the proform of PRG2 and as a complex (probably a 2:2:2 heterohexamer) with pro-PRG2 and C3dg.,tissue specificity:Expressed by the liver and secreted in plasma.,

| Validation Data



Western Blot analysis using AGT Monoclonal Antibody against human plasma (1).

Contact information

Orders: order@immunoway.com
Support: tech@immunoway.com
Telephone: 877-594-3616 (Toll Free), 408-747-0185
Website: <http://www.immunoway.com>
Address: 2200 Ringwood Ave San Jose, CA 95131 USA



Please scan the QR code to access additional product information:
AGT Mouse mAb