

## GOT2 Mouse mAb

CatalogNo: YM0006

### | Key Features

#### Host Species

- Mouse

#### Reactivity

- Human, Mouse, Rat, Monkey

#### Applications

- WB, IF, ELISA

#### MW

- 48kD (Calculated)

### | Recommended Dilution Ratios

**WB 1:500-1:2000**

**IF 1:200-1:1000**

**ELISA 1:10000**

**Not yet tested in other applications.**

### | Storage

#### Storage\*

-15°C to -25°C/1 year(Do not lower than -25°C)

#### Formulation

Liquid in PBS containing 50% glycerol, 0.5% BSA and 0.02% sodium azide.

### | Basic Information

#### Clonality

Monoclonal

### | Immunogen Information

#### Immunogen

Purified recombinant fragment of human AATM expressed in E. Coli.

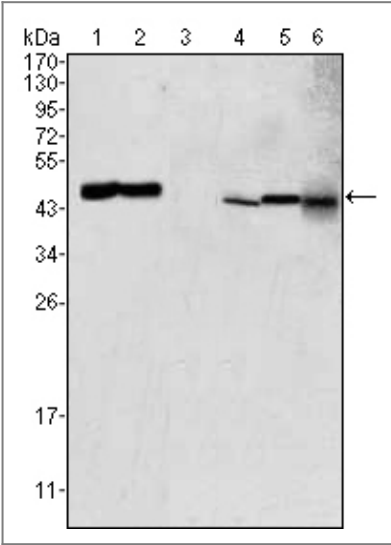
#### Specificity

AATM Monoclonal Antibody detects endogenous levels of AATM protein.

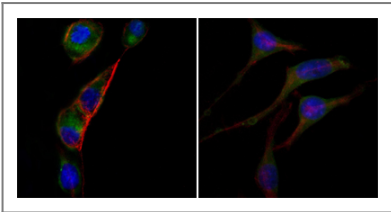
### | Target Information

Gene name	GOT2		
Protein Name	Aspartate aminotransferase, mitochondrial		
	Organism	Gene ID	UniProt ID
	Human	<a href="#">2806</a> ;	<a href="#">P00505</a> ;
	Mouse	<a href="#">14719</a> ;	<a href="#">P05202</a> ;
	Rat	<a href="#">25721</a> ;	<a href="#">P00507</a> ;
Cellular Localization	Mitochondrion matrix . Cell membrane . Exposure to alcohol promotes translocation to the cell membrane. .		
Tissue specificity	Epithelium,Gastric mucosa,Muscle,		
Function	Catalytic activity:L-aspartate + 2-oxoglutarate = oxaloacetate + L-glutamate.,cofactor:Pyridoxal phosphate.,Function:Facilitates cellular uptake of long-chain free fatty acids.,miscellaneous:In eukaryotes there are cytoplasmic, mitochondrial and chloroplastic isozymes.,similarity:Belongs to the class-I pyridoxal-phosphate-dependent aminotransferase family.,subunit:Homodimer.,		

Validation Data



Western Blot analysis using AATM Monoclonal Antibody against HEK293 (1), PC-12 (2), HL-60 (3), BCBL-1 (4), HepG2 (5) and NIH/3T3 (6) cell lysate.



Immunofluorescence analysis of PC-3 (left) and SK-BR-3 (right) cells using AATM Monoclonal Antibody (green). Red: Actin filaments have been labeled with DY-554 phalloidin. Blue: DRAQ5 fluorescent DNA dye.

Contact information

Orders: order@immunoway.com  
Support: tech@immunoway.com  
Telephone: 877-594-3616 (Toll Free), 408-747-0185  
Website: http://www.immunoway.com  
Address: 2200 Ringwood Ave San Jose, CA 95131 USA



Please scan the QR code  
to access additional  
product information:  
**GOT2 Mouse mAb**

---

For Research Use Only. Not for Use in Diagnostic Procedures.

[Antibody](#) | [ELISA Kits](#) | [Protein](#) | [Reagents](#)