

SP3 (Acetyl Lys551) Rabbit pAb

CatalogNo: YK0170

Key Features

Host Species

- Rabbit

Reactivity

- Human, Mouse

Applications

- WB, IHC

MW

- 85kD (Observed)

Isotype

- IgG

Storage

Storage* -15°C to -25°C/1 year (Do not lower than -25°C)

Formulation Liquid in PBS containing 50% glycerol, 0.5% BSA and 0.02% sodium azide.

Recommended Dilution Ratios

WB 1:500-2000

IHC 1:50-300

Basic Information

Clonality Polyclonal

Immunogen Information

Immunogen Synthesized peptide derived from human Sp3 (Acetyl Lys551)

Specificity This antibody detects endogenous levels of Human, Mouse Sp3 (Acetyl Lys551). The name of modified sites may be influenced by many factors, such as species (the modified site was not originally found in human samples) and the change of protein sequence (the previous protein sequence is incomplete, and the protein sequence may be prolonged with the development of protein sequencing technology). When naming, we will use the "numbers" in historical reference to keep the sites consistent with the reports. The antibody binds to the following modification sequence (lowercase letters are modification sites): RlKEE

Target Information

Gene name SP3

Protein Name Sp3 (Acetyl Lys551)

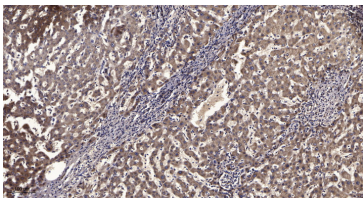
Organism	Gene ID	UniProt ID
Human	6670 ;	Q02447 ;
Mouse	20687 ;	O70494 ;

Cellular Localization Nucleus. Nucleus, PML body. Localizes to the nuclear periphery and in nuclear dots when sumoylated. Some localization in PML nuclear bodies.

Tissue specificity Ubiquitously expressed.

Function Function:Transcriptional factor that can act as an activator or repressor, probably in a isoform-specific manner. Binds to GT and GC boxes promoters elements.,similarity:Belongs to the Sp1 C2H2-type zinc-finger protein family.,similarity:Contains 3 C2H2-type zinc fingers.,tissue specificity:Ubiquitously expressed.,

Validation Data



Immunohistochemical analysis of paraffin-embedded human liver cancer. 1, Antibody was diluted at 1:200(4° overnight). 2, Tris-EDTA,pH9.0 was used for antigen retrieval. 3,Secondary antibody was diluted at 1:200(room temperature, 45min).

Contact information

Orders: order@immunoway.com
Support: tech@immunoway.com
Telephone: 877-594-3616 (Toll Free), 408-747-0185
Website: <http://www.immunoway.com>
Address: 2200 Ringwood Ave San Jose, CA 95131 USA



Please scan the QR code to access additional product information:
SP3 (Acetyl Lys551)
Rabbit pAb