

# KLF13 (Acetyl Lys166) Rabbit pAb

CatalogNo: YK0152

## Key Features

### Host Species

- Rabbit

### Reactivity

- Human, Mouse

### Applications

- WB, IHC

### MW

- 32kD (Observed)

### Isotype

- IgG

## Storage

**Storage\*** -15°C to -25°C/1 year (Do not lower than -25°C)

**Formulation** Liquid in PBS containing 50% glycerol, 0.5% BSA and 0.02% sodium azide.

## Recommended Dilution Ratios

**WB 1:500-2000**

**IHC 1:50-300**

## Basic Information

**Clonality** Polyclonal

## Immunogen Information

**Immunogen** Synthesized peptide derived from human KLF13 (Acetyl Lys166)

**Specificity** This antibody detects endogenous levels of Human, Mouse KLF13 (Acetyl Lys166). The name of modified sites may be influenced by many factors, such as species (the modified site was not originally found in human samples) and the change of protein sequence (the previous protein sequence is incomplete, and the protein sequence may be prolonged with the development of protein sequencing technology). When naming, we will use the "numbers" in historical reference to keep the sites consistent with the reports. The antibody binds to the following modification sequence (lowercase letters are modification sites): QRKHK

## Target Information

**Gene name** KLF13 BTEB3 NSLP1

**Protein Name** KLF13 (Acetyl Lys166)

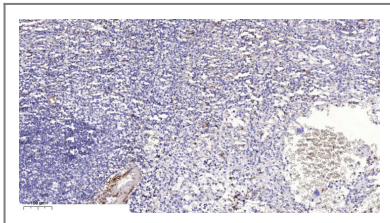
Organism	Gene ID	UniProt ID
Human	<a href="#">51621</a> ;	<a href="#">Q9Y2Y9</a> ;
Mouse	<a href="#">50794</a> ;	<a href="#">Q9JJZ6</a> ;

**Cellular Localization** Nucleus.

**Tissue specificity** Ubiquitous.

**Function** Domain:The Ala/Pro-rich domain may contain discrete activation and repression subdomains and also can mediate protein-protein interactions.,Function:Represses transcription by binding to the BTE site, a GC-rich DNA element, in competition with the activator SP1. It also represses transcription by interacting with the corepressor Sin3A and HDAC1. Activates RANTES expression in T-cells.,PTM:Phosphorylated.,similarity:Belongs to the Sp1 C2H2-type zinc-finger protein family.,similarity:Contains 3 C2H2-type zinc fingers.,tissue specificity:Ubiquitous.,

## Validation Data



Immunohistochemical analysis of paraffin-embedded human spleen. 1, Antibody was diluted at 1:200(4° overnight). 2, Tris-EDTA,pH9.0 was used for antigen retrieval. 3,Secondary antibody was diluted at 1:200(room temperature, 45min).

## Contact information

Orders: [order@immunoway.com](mailto:order@immunoway.com)  
Support: [tech@immunoway.com](mailto:tech@immunoway.com)  
Telephone: 877-594-3616 (Toll Free), 408-747-0185  
Website: <http://www.immunoway.com>  
Address: 2200 Ringwood Ave San Jose, CA 95131 USA



Please scan the QR code to access additional product information:  
**KLF13 (Acetyl Lys166) Rabbit pAb**