

# SREBP-1 (Acetyl Lys324) Rabbit pAb

CatalogNo: YK0094

## Key Features

### Host Species

- Rabbit

### Reactivity

- Human, Mouse, Rat

### Applications

- IHC, IF, WB

### MW

- 130kD (Observed)

### Isotype

- IgG

## Storage

**Storage\*** -15°C to -25°C/1 year (Do not lower than -25°C)

**Formulation** Liquid in PBS containing 50% glycerol, 0.5% BSA and 0.02% sodium azide.

## Recommended Dilution Ratios

IHC 1:50-200

WB 1:500-2000

IF 1:50-200

## Basic Information

**Clonality** Polyclonal

## Immunogen Information

**Immunogen** Synthesized peptide derived from human SREBP-1 (Acetyl-Lys324)

**Specificity** This antibody detects endogenous acetyl levels of SREBP-1 (Acetyl-Lys324) at Human:K324, Mouse:K318, Rat:K318. The name of modified sites may be influenced by many factors, such as species (the modified site was not originally found in human samples) and the change of protein sequence (the previous protein sequence is incomplete, and the protein sequence may be prolonged with the development of protein sequencing technology). When naming, we will use the "numbers" in historical reference to keep the sites consistent with the reports. The antibody binds to the following modification sequence (lowercase letters are modification sites): GEKRT

---

## | Target Information

**Gene name** SREBF1 BHLHD1 SREBP1

**Protein Name** SREBP-1 (Acetyl-Lys324)

Organism	Gene ID	UniProt ID
Human	<a href="#">6720</a> ;	<a href="#">P36956</a> ;

**Cellular Localization**

[Sterol regulatory element-binding protein 1]: Endoplasmic reticulum membrane ; Multi-pass membrane protein . Golgi apparatus membrane ; Multi-pass membrane protein . Cytoplasmic vesicle, COPII-coated vesicle membrane ; Multi-pass membrane protein . At high sterol concentrations, the SCAP-SREBP is retained in the endoplasmic reticulum. Low sterol concentrations promote recruitment into COPII-coated vesicles and transport of the SCAP-SREBP to the Golgi, where it is processed. .; [Processed sterol regulatory element-binding protein 1]: Nucleus .; [Isoform SREBP-1aDelta]: Nucleus .; [Isoform SREBP-1cDelta]: Nucleus .

**Tissue specificity**

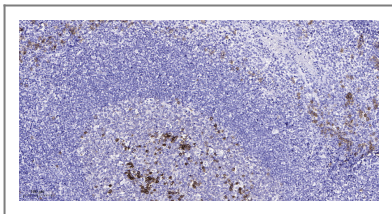
Expressed in a wide variety of tissues, most abundant in liver and adrenal gland (PubMed:8402897). In fetal tissues lung and liver shows highest expression (PubMed:8402897). .; [Isoform SREBP-1A]: Predominates in hepatoma cell lines (PubMed:8402897). Also expressed in kidney, brain, white fat, and muscle (PubMed:8402897). .; [Isoform SREBP-1C]: Predominantly expressed in liver and adipose tissues (PubMed:8402897). Also expressed in kidney, brain, white fat, and muscle (PubMed:8402897).

**Function**

Alternative products:Additional isoforms seem to exist,Function:Transcriptional activator required for lipid homeostasis. Regulates transcription of the LDL receptor gene as well as the fatty acid and to a lesser degree the cholesterol synthesis pathway (By similarity). Binds to the sterol regulatory element 1 (SRE-1) (5'-ATCACCCAC-3'). Has dual sequence specificity binding to both an E-box motif (5'-ATCACGTGA-3') and to SRE-1 (5'-ATCACCCAC-3').,online information:Sterol regulatory element-binding protein entry,PTM:At low cholesterol the SCAP/SREBP complex is recruited into COPII vesicles for export from the ER. In the Golgi complex SREBPs are cleaved sequentially by site-1 and site-2 protease. The first cleavage by site-1 protease occurs within the luminal loop, the second cleavage by site-2 protease occurs within the first transmembrane domain and releases the transcription factor from the Golgi membrane. Apoptosis triggers cleavage by the cysteine proteases caspase-3 and caspase-7.,sequence Caution:Intron retention.,similarity:Belongs to the SREBP family.,similarity:Contains 1 basic helix-loop-helix (bHLH) domain.,subcellular location:Moves from the endoplasmic reticulum to the Golgi in the absence of sterols.,subunit:Forms a tight complex with SCAP in the ER membrane. Efficient DNA binding of the soluble transcription factor fragment requires dimerization with another bHLH protein. Interacts with LMNA.,tissue specificity:Expressed in a wide variety of tissues, most abundant in liver and adrenal gland. In fetal tissues lung and liver shows highest expression. Isoform SREBP-1C predominates in liver, adrenal gland and ovary, whereas isoform SREBP-1A predominates in hepatoma cell lines. Isoform SREBP-1A and isoform SREBP-1C are found in kidney, brain, white fat, and muscle.,

---

## | Validation Data



Immunohistochemical analysis of paraffin-embedded human tonsil. 1, Antibody was diluted at 1:200(4° overnight). 2, Tris-EDTA,pH9.0 was used for antigen retrieval. 3,Secondary antibody was diluted at 1:200(room temperature, 45min).

## | Contact information

Orders: [order@immunoway.com](mailto:order@immunoway.com)  
Support: [tech@immunoway.com](mailto:tech@immunoway.com)  
Telephone: 877-594-3616 (Toll Free), 408-747-0185  
Website: <http://www.immunoway.com>  
Address: 2200 Ringwood Ave San Jose, CA 95131 USA



Please scan the QR code to access additional product information:  
**SREBP-1 (Acetyl Lys324) Rabbit pAb**

---

For Research Use Only. Not for Use in Diagnostic Procedures.

[Antibody](#) | [ELISA Kits](#) | [Protein](#) | [Reagents](#)