

# ACSS1 (Acetyl Lys642) Rabbit pAb

CatalogNo: YK0085

## Key Features

### Host Species

- Rabbit

### Reactivity

- Human:K642,Mouse:K635,Rat:K635

### Applications

- WB,ELISA

### MW

- 75kD (Calculated)

### Isotype

- IgG

## Storage

**Storage\*** -15°C to -25°C/1 year(Do not lower than -25°C)

**Formulation** Liquid in PBS containing 50% glycerol, 0.5% BSA and 0.02% sodium azide.

## Recommended Dilution Ratios

**WB 1:500-1:2000**

**ELISA 1:20000**

**Not yet tested in other applications.**

## Basic Information

**Clonality** Polyclonal

## Immunogen Information

**Immunogen** Synthesized Acetyl peptide derived from human ACSS1. at AA range: K642

**Specificity** This antibody detects endogenous levels of ACSS1 at Human:K642;Mouse:K635;Rat:K635, It doesn't react with total protein. The name of modified sites may be influenced by many factors, such as species (the modified site was not originally found in human samples) and the change of protein sequence (the previous protein sequence is incomplete, and the protein sequence may be prolonged with the development of protein sequencing technology). When naming, we will use the "numbers" in historical reference to keep the sites consistent with the reports. The antibody binds to the following modification sequence (lowercase letters are modification sites):SGkVM

## Target Information

**Gene name** ACSS1 ACAS2L KIAA1846

**Protein Name** Acetyl-coenzyme A synthetase 2-like mitochondrial

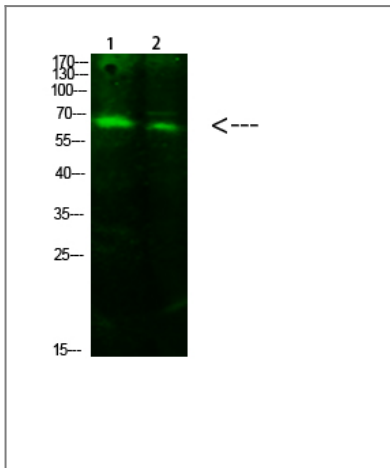
Organism	Gene ID	UniProt ID
Human	<a href="#">84532</a> ;	<a href="#">Q9NUB1</a> ;
Mouse	<a href="#">68738</a> ;	<a href="#">Q99NB1</a> ;

**Cellular Localization** Mitochondrion matrix .

**Tissue specificity** Amygdala,Brain,PCR rescued clones,Placenta,Spleen,Stomach,T

**Function** Catalytic activity:ATP + acetate + CoA = AMP + diphosphate + acetyl-CoA.,Function:Converts acetate to acetyl-CoA so that it can be used for oxidation through the tricarboxylic cycle to produce ATP and CO(2).,sequence Caution:Sequencing errors.,similarity:Belongs to the ATP-dependent AMP-binding enzyme family.,

## Validation Data



Western Blot analysis of 1,293T 2, hela cells using primary antibody diluted at 1:1000(4°C overnight). Secondary antibody:Goat Anti-rabbit IgG IRDye 800( diluted at 1:5000, 25°C, 1 hour)

## Contact information

Orders: [order@immunoway.com](mailto:order@immunoway.com)  
Support: [tech@immunoway.com](mailto:tech@immunoway.com)  
Telephone: 877-594-3616 (Toll Free), 408-747-0185  
Website: <http://www.immunoway.com>  
Address: 2200 Ringwood Ave San Jose, CA 95131 USA



Please scan the QR code to access additional product information:  
**ACSS1 (Acetyl Lys642) Rabbit pAb**

