

## HSP70 (Acetyl Lys246) Rabbit pAb

CatalogNo: YK0061

### Key Features

#### Host Species

- Rabbit

#### Reactivity

- Human,Rat,Mouse,

#### Applications

- WB,ELISA

#### MW

- 70kD (Observed)

#### Isotype

- IgG

### Recommended Dilution Ratios

**WB 1:500-1:2000**

**ELISA 1:10000**

**Not yet tested in other applications.**

### Storage

#### Storage\*

-15°C to -25°C/1 year(Do not lower than -25°C)

#### Formulation

Liquid in PBS containing 50% glycerol, 0.5% BSA and 0.02% sodium azide.

### Basic Information

#### Clonality

Polyclonal

### Immunogen Information

#### Immunogen

Synthesized acetyl-peptide derived from the Internal region of human HSP70 around the acetylation site of K246.

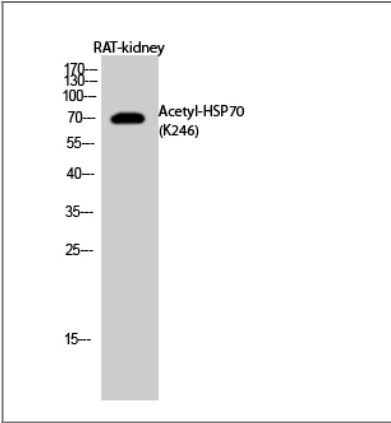
#### Specificity

Acetyl-HSP70 (K246) Polyclonal Antibody detects endogenous levels of HSP70 protein only when acetylation at K246. The name of modified sites may be influenced by many factors, such as species (the modified site was not originally found in human samples) and the change of protein sequence (the previous protein sequence is incomplete, and the protein sequence may be prolonged with the development of protein sequencing technology). When naming, we will use the "numbers" in historical reference to keep the sites consistent with the reports. The antibody binds to the following modification sequence (lowercase letters are modification sites):EFkRK

## Target Information

Gene name	HSPA1A		
Protein Name	Heat shock 70 kDa protein 1A/1B		
	Organism	Gene ID	UniProt ID
	Human	<a href="#">3303</a> ; <a href="#">3304</a> ;	<a href="#">P0DMV8</a> ; <a href="#">P0DMV9</a> ;
Cellular Localization	Cytoplasm . Nucleus . Cytoplasm, cytoskeleton, microtubule organizing center, centrosome . Secreted . Localized in cytoplasmic mRNP granules containing untranslated mRNAs.		
Tissue specificity	Brain,Cajal-Retzius cell,Embryonic kidney,Epithelium,Fetal		
Function	Function:In cooperation with other chaperones, Hsp70s stabilize preexistent proteins against aggregation and mediate the folding of newly translated polypeptides in the cytosol as well as within organelles. These chaperones participate in all these processes through their ability to recognize nonnative conformations of other proteins. They bind extended peptide segments with a net hydrophobic character exposed by polypeptides during translation and membrane translocation, or following stress-induced damage. In case of rotavirus A infection, serves as a post-attachment receptor for the virus to facilitate entry into the cell.,induction:By heat shock.,similarity:Belongs to the heat shock protein 70 family.,subunit:HSPA1B is found in a sperm-specific complex with CATSPER1 and CATSPERB (By similarity). Interacts with TSC2. Interacts with IRAK1BP1.,tissue specificity:HSPA1B is testis-specific.,		

## Validation Data



Western Blot analysis of RAT-kidney cells using Acetyl-HSP70 (K246) Polyclonal Antibody diluted at 1:1000. Secondary antibody(catalog#:RS0002) was diluted at 1:20000

## Contact information

Orders: order@immunoway.com  
Support: tech@immunoway.com  
Telephone: 877-594-3616 (Toll Free), 408-747-0185  
Website: http://www.immunoway.com  
Address: 2200 Ringwood Ave San Jose, CA 95131 USA



Please scan the QR code  
to access additional  
product information:  
**HSP70 (Acetyl  
Lys246) Rabbit pAb**

---

For Research Use Only. Not for Use in Diagnostic Procedures.

[Antibody](#) | [ELISA Kits](#) | [Protein](#) | [Reagents](#)