

# HMGB1 (Acetyl Lys12) Rabbit pAb

CatalogNo: YK0060 **Orthogonal Validated** 

## Key Features

### Host Species

- Rabbit

### Reactivity

- Human, Mouse, Rat

### Applications

- WB, IHC, IF, ELISA

### MW

- 25kD (Observed)

### Isotype

- IgG

## Storage

**Storage\*** -15°C to -25°C/1 year (Do not lower than -25°C)**Formulation** Liquid in PBS containing 50% glycerol, 0.5% BSA and 0.02% sodium azide.

## Recommended Dilution Ratios

**WB 1:500-1:2000****IHC: 1:100-300****ELISA 1:10000****IF 1:50-200**

## Basic Information

**Clonality** Polyclonal

## Immunogen Information

**Immunogen** Synthesized acetyl-peptide derived from the N-terminal region of human HMGB1 around the acetylation site of K12.

## Specificity

Acetyl-HMGB1 (K12) Polyclonal Antibody detects endogenous levels of HMGB1 protein only when acetylation at K12. The name of modified sites may be influenced by many factors, such as species (the modified site was not originally found in human samples) and the change of protein sequence (the previous protein sequence is incomplete, and the protein sequence may be prolonged with the development of protein sequencing technology). When naming, we will use the "numbers" in historical reference to keep the sites consistent with the reports. The antibody binds to the following modification sequence (lowercase letters are modification sites):RGkMS

## Target Information

**Gene name** HMGB1

**Protein Name** High mobility group protein B1

| Organism | Gene ID                    | UniProt ID              |
|----------|----------------------------|-------------------------|
| Human    | <a href="#">3146;</a>      | <a href="#">P09429;</a> |
| Mouse    | <a href="#">100862258;</a> | <a href="#">P63158;</a> |
| Rat      | <a href="#">25459;</a>     | <a href="#">P63159;</a> |

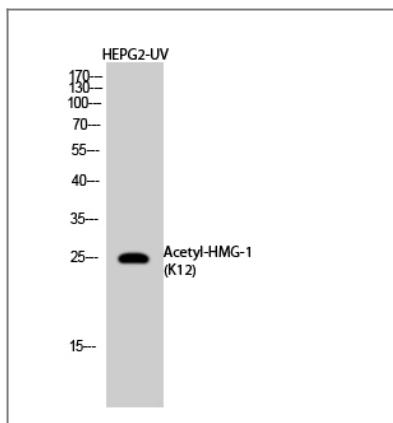
## Cellular Localization

Nucleus . Chromosome . Cytoplasm . Secreted . Cell membrane ; Peripheral membrane protein ; Extracellular side . Endosome . Endoplasmic reticulum-Golgi intermediate compartment . In basal state predominantly nuclear. Shuttles between the cytoplasm and the nucleus (PubMed:12231511, PubMed:17114460). Translocates from the nucleus to the cytoplasm upon autophagy stimulation (PubMed:20819940). Release from macrophages in the extracellular milieu requires the activation of NLRC4 or NLRP3 inflammasomes (By similarity). Passively released to the extracellular milieu from necrotic cells by diffusion, involving the fully reduced HGMB1 which subsequently gets oxidized (PubMed:19811284). Also released from apoptotic cells (PubMed:16855214, PubMed:18631454). Active secretion from a variety of immune and non-immune cells such as macrophages, monocytes, neutrophils, dendritic cells and natural killer cells in response to various stimuli such as LPS and cytokines involves a nonconventional secretory process via secretory lysosomes (PubMed:12231511, PubMed:14532127, PubMed:15944249). Secreted by plasma cells in response to LPS (By similarity). Found on the surface of activated platelets (PubMed:11154118). An increased chromatin association is observed when associated with the adenovirus protein pVII (PubMed:27362237). .

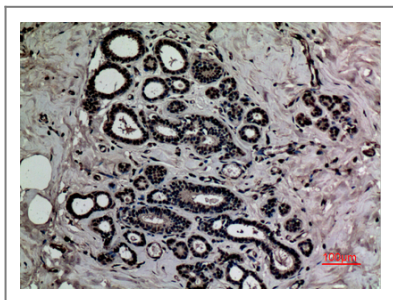
**Tissue specificity** Ubiquitous. Expressed in platelets (PubMed:11154118).

**Function** Function: Binds preferentially single-stranded DNA and unwinds double stranded DNA., similarity: Belongs to the HMGB family., similarity: Contains 2 HMG box DNA-binding domains.,

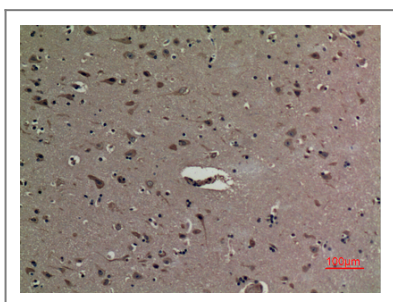
## Validation Data



Western Blot analysis of HepG2 cells treated with UV using Acetyl-HMG-1 (K12) Polyclonal Antibody. Antibody was diluted at 1:1000. Secondary antibody(catalog#:RS0002) was diluted at 1:20000



Immunohistochemical analysis of paraffin-embedded human-breast, antibody was diluted at 1:100



Immunohistochemical analysis of paraffin-embedded human-brain, antibody was diluted at 1:100

## Contact information

Orders: [order@immunoway.com](mailto:order@immunoway.com)  
 Support: [tech@immunoway.com](mailto:tech@immunoway.com)  
 Telephone: 877-594-3616 (Toll Free), 408-747-0185  
 Website: <http://www.immunoway.com>  
 Address: 2200 Ringwood Ave San Jose, CA 95131 USA



Please scan the QR code to access additional product information:

**HMGB1 (Acetyl Lys12) Rabbit pAb**

For Research Use Only. Not for Use in Diagnostic Procedures.

[Antibody](#) | [ELISA Kits](#) | [Protein](#) | [Reagents](#)