

Ub (Acetyl Lys33) Rabbit pAb

CatalogNo: YK0055

Key Features

Host Species

- Rabbit

Reactivity

- Human, Mouse, Rat

Applications

- WB, ELISA

MW

- 80kD (Observed)

Isotype

- IgG

Storage

Storage* -15°C to -25°C/1 year (Do not lower than -25°C)

Formulation Liquid in PBS containing 50% glycerol, 0.5% BSA and 0.02% sodium azide.

Recommended Dilution Ratios

WB 1:500-1:2000

ELISA 1:20000

Not yet tested in other applications.

Basic Information

Clonality Polyclonal

Immunogen Information

Immunogen Synthesized acetyl-peptide derived from the human Ub around the acetylation site of K33.

Specificity Acetyl-Ub (K33) Polyclonal Antibody Synthesized peptide derived from the human Ub around the acetylation site of K33. The name of modified sites may be influenced by many factors, such as species (the modified site was not originally found in human samples) and the change of protein sequence (the previous protein sequence is incomplete, and the protein sequence may be prolonged with the development of protein sequencing technology). When naming, we will use the "numbers" in historical reference to keep the sites consistent with the reports. The antibody binds to the following modification sequence (lowercase letters are modification sites): QDKEG

| Target Information

Gene name UBA52/RPS27A/UBB/UBC

Protein Name Ubiquitin

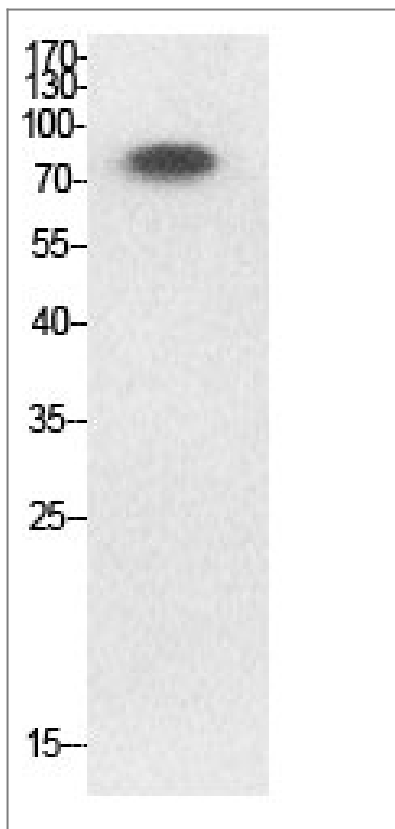
Organism	Gene ID	UniProt ID
Human	7311 ;	P0CG47 ; P0CG48 ; P62979 ; P62987 ;

Cellular Localization [Ubiquitin]: Cytoplasm . Nucleus .; [60S ribosomal protein L40]: Cytoplasm .

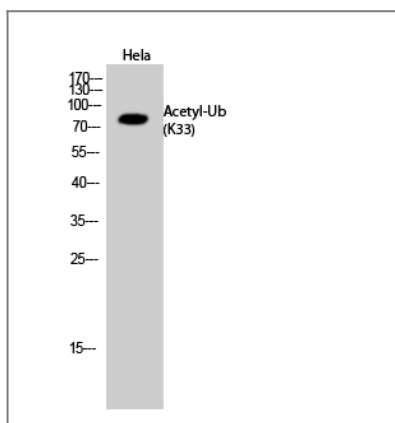
Tissue specificity Brain,Epithelium,Fetal brain cortex,Liver,L

Function Function:Protein modifier which can be covalently attached to target lysines either as a monomer or as a lysine-linked polymer. Attachment to proteins as a Lys-48-linked polymer usually leads to their degradation by proteasome. Attachment to proteins as a monomer or as an alternatively linked polymer does not lead to proteasomal degradation and may be required for numerous functions, including maintenance of chromatin structure, regulation of gene expression, stress response, ribosome biogenesis and DNA repair.,miscellaneous:This ribosomal protein is synthesized as a C-terminal extension protein (CEP) of ubiquitin.,miscellaneous:Ubiquitin is synthesized as a polyubiquitin precursor with exact head to tail repeats, the number of repeats differ between species and strains. In some species there is a final amino-acid after the last repeat, here in human a Val. Some ubiquitin genes contain a single copy of ubiquitin fused to a ribosomal protein (either L40 or S27a).,PTM:Several types of polymeric chains can be formed, depending on the lysine used for the assembly.,similarity:Belongs to the ribosomal protein L40e family.,similarity:Belongs to the ribosomal protein S27Ae family.,similarity:Belongs to the ubiquitin family.,

| Validation Data



Western Blot analysis of HeLa cells using Acetyl-Ub (K33) Polyclonal Antibody. Secondary antibody(catalog#:RS0002) was diluted at 1:20000



Western Blot analysis of HeLa cells using Acetyl-Ub (K33) Polyclonal Antibody. Secondary antibody(catalog#:RS0002) was diluted at 1:20000

Contact information

Orders: order@immunoway.com
 Support: tech@immunoway.com
 Telephone: 877-594-3616 (Toll Free), 408-747-0185
 Website: <http://www.immunoway.com>
 Address: 2200 Ringwood Ave San Jose, CA 95131 USA



Please scan the QR code to access additional product information:
Ub (Acetyl Lys33)
Rabbit pAb