

## Ku-70 (Acetyl Lys542) Rabbit pAb

CatalogNo: YK0033

### Key Features

#### Host Species

- Rabbit

#### Reactivity

- Human, Mouse, Rat

#### Applications

- WB, IHC, IF, ELISA

#### MW

- 100,70kD (Observed)

#### Isotype

- IgG

### Storage

**Storage\*** -15°C to -25°C/1 year (Do not lower than -25°C)

**Formulation** Liquid in PBS containing 50% glycerol, 0.5% BSA and 0.02% sodium azide.

### Recommended Dilution Ratios

**WB 1:500-1:2000**

**IHC: 1:100-300**

**ELISA 1:20000**

**IF 1:50-200**

### Basic Information

**Clonality** Polyclonal

### Immunogen Information

**Immunogen** Synthesized acetyl-peptide derived from the human Ku-70 around the acetylation site of K542.

**Specificity** Acetyl-Ku-70 (K542) Polyclonal Antibody detects endogenous levels of Ku-70 protein only when acetylated at K542. The name of modified sites may be influenced by many factors, such as species (the modified site was not originally found in human samples) and the change of protein sequence (the previous protein sequence is incomplete, and the protein sequence may be prolonged with the development of protein sequencing technology). When naming, we will use the "numbers" in historical reference to keep the sites consistent with the reports. The antibody binds to the following modification sequence (lowercase letters are modification sites): VTKRK

---

## | Target Information

**Gene name** XRCC6

**Protein Name** X-ray repair cross-complementing protein 6

Organism	Gene ID	UniProt ID
Human	<a href="#">2547;</a>	<a href="#">P12956;</a>
Mouse	<a href="#">14375;</a>	<a href="#">P23475;</a>

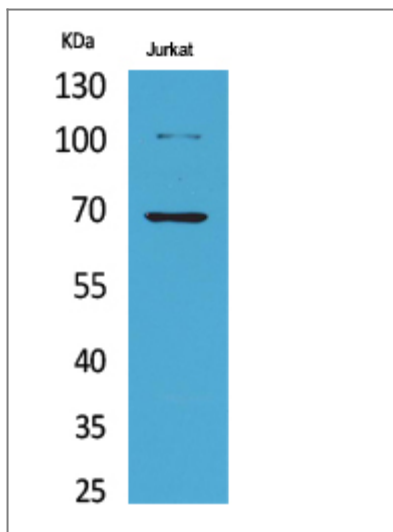
**Cellular Localization** Nucleus . Chromosome .

**Tissue specificity** Brain,Cervix carcinoma,Epithelium,Heart,Hepatocyte,Kidney,Liver,Lun

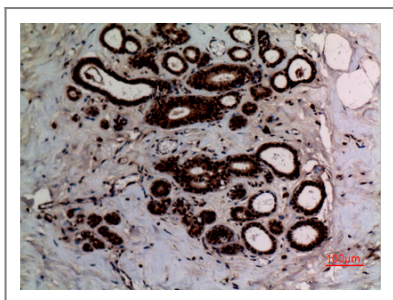
**Function** developmental stage:Expression does not increase during promyelocyte differentiation.,Disease:Individuals with systemic lupus erythematosus (SLE) and related disorders produce extremely large amounts of autoantibodies to p70 and p86. Existence of a major autoantigenic epitope or epitopes on the C-terminal 190 amino acids of p70 containing the leucine repeat. The majority of autoantibodies to p70 in most sera from patients with SLE seem to be reactive with this region.,Function:Single stranded DNA-dependent ATP-dependent helicase. Has a role in chromosome translocation. The DNA helicase II complex binds preferentially to fork-like ends of double-stranded DNA in a cell cycle-dependent manner. It works in the 3'-5' direction. Binding to DNA may be mediated by p70. Involved in DNA nonhomologous end joining (NHEJ) required for double-strand break repair and V(D)J recombination. The Ku p70/p86 dimer acts as regulatory subunit of the DNA-dependent protein kinase complex DNA-PK by increasing the affinity of the catalytic subunit PRKDC to DNA by 100-fold. The Ku p70/p86 dimer is probably involved in stabilizing broken DNA ends and bringing them together. The assembly of the DNA-PK complex to DNA ends is required for the NHEJ ligation step. Required for osteocalcin gene expression.,induction:In osteoblasts, by FGF2.,PTM:Phosphorylation by PRKDC may enhance helicase activity. Phosphorylation of Ser-51 does not affect DNA repair.,similarity:Belongs to the ku70 family.,similarity:Contains 1 Ku domain.,similarity:Contains 1 SAP domain.,subunit:Heterodimer of a 70 kDa and a 80 kDa subunit. The dimer associates in a DNA-dependent manner with PRKDC to form the DNA-dependent protein kinase complex DNA-PK, and with the LIG4-XRCC4 complex. The dimer also associates with NARG1, and this complex binds to the osteocalcin promoter and activates osteocalcin expression. In addition, the 70 kDa subunit binds to the osteoblast-specific transcription factors MSX2, RUNX2 and DLX5. Interacts with ELF3. Interacts with XRCC6BP1.,

---

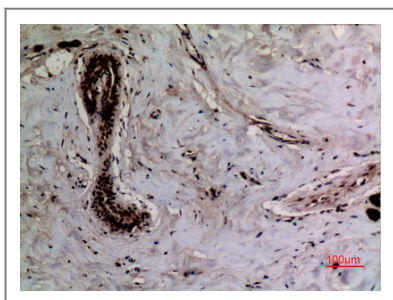
## | Validation Data



Western Blot analysis of Jurkat cells using Acetyl-Ku-70 (K542) Polyclonal Antibody. Secondary antibody(catalog#:RS0002) was diluted at 1:20000



Immunohistochemical analysis of paraffin-embedded human-breast, antibody was diluted at 1:100



Immunohistochemical analysis of paraffin-embedded human-breast, antibody was diluted at 1:100

## Contact information

Orders: [order@immunoway.com](mailto:order@immunoway.com)  
 Support: [tech@immunoway.com](mailto:tech@immunoway.com)  
 Telephone: 877-594-3616 (Toll Free), 408-747-0185  
 Website: <http://www.immunoway.com>  
 Address: 2200 Ringwood Ave San Jose, CA 95131 USA



Please scan the QR code to access additional product information:  
**Ku-70 (Acetyl Lys542) Rabbit pAb**