

EF-1 α 1/2 (Acetyl Lys41) Rabbit pAb

CatalogNo: YK0028

Key Features

Host Species

- Rabbit

Reactivity

- Human, Mouse, Rat

Applications

- WB, ELISA

MW

- 50kD (Observed)

Isotype

- IgG

Recommended Dilution Ratios

WB 1:500-1:2000**ELISA 1:20000****Not yet tested in other applications.**

Storage

Storage*

-15°C to -25°C/1 year (Do not lower than -25°C)

Formulation

Liquid in PBS containing 50% glycerol, 0.5% BSA and 0.02% sodium azide.

Basic Information

Clonality

Polyclonal

Immunogen Information

Immunogen

The antiserum was produced against synthesized Acetyl-peptide derived from human EEF1A around the Acetylation site of Lys41. AA range:1-50

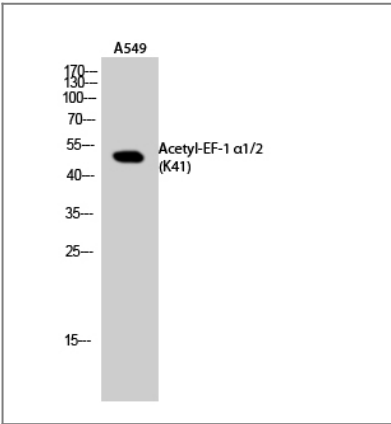
Specificity

Acetyl-EF-1 α 1/2 (K41) Polyclonal Antibody detects endogenous levels of EF-1 α 1/2 protein only when acetylated at K41. The name of modified sites may be influenced by many factors, such as species (the modified site was not originally found in human samples) and the change of protein sequence (the previous protein sequence is incomplete, and the protein sequence may be prolonged with the development of protein sequencing technology). When naming, we will use the "numbers" in historical reference to keep the sites consistent with the reports. The antibody binds to the following modification sequence (lowercase letters are modification sites): IEKFE

Target Information

Gene name	EEF1A1/EEF1A2/EEF1A1P5		
Protein Name	Elongation factor 1-alpha 1/Elongation factor 1-alpha 2/Putative elongation factor 1-alpha-like 3		
	Organism	Gene ID	UniProt ID
	Human	1915;	P68104;
	Mouse	13627;	P10126;
	Rat	171361;	P62630;
Cellular Localization	Cytoplasm . Nucleus . Nucleus, nucleolus . Cell membrane . Colocalizes with DLC1 at actin-rich regions in the cell periphery (PubMed:19158340). Translocates together with ZPR1 from the cytoplasm to the nucleus and nucleolus after treatment with mitogens (PubMed:8650580). Localization at the cell membrane depends on EEF1A1 phosphorylation status and the presence of PPP1R16B (PubMed:26497934). .		
Tissue specificity	Brain, placenta, lung, liver, kidney, pancreas but barely detectable in heart and skeletal muscle.		
Function	Caution:Could be the product of a pseudogene.,Function:This protein promotes the GTP-dependent binding of aminoacyl-tRNA to the A-site of ribosomes during protein biosynthesis.,similarity:Belongs to the GTP-binding elongation factor family. EF-Tu/EF-1A subfamily.,subunit:Found in a nuclear export complex with XPO5, EEF1A1, Ran and aminoacylated tRNA. Interacts with XPO5. May interact with ERGIC2.,tissue specificity:Brain, placenta, lung, liver, kidney, pancreas but barely detectable in heart and skeletal muscle.,		

Validation Data



Western Blot analysis of A549 cells using Acetyl-EF-1 α1/2 (K41) Polyclonal Antibody. Secondary antibody(catalog#:RS0002) was diluted at 1:20000

Contact information

Orders: order@immunoway.com
Support: tech@immunoway.com
Telephone: 877-594-3616 (Toll Free), 408-747-0185
Website: http://www.immunoway.com
Address: 2200 Ringwood Ave San Jose, CA 95131 USA



Please scan the QR code
to access additional
product information:
**EF-1 α 1/2 (Acetyl
Lys41) Rabbit pAb**

For Research Use Only. Not for Use in Diagnostic Procedures.

[Antibody](#) | [ELISA Kits](#) | [Protein](#) | [Reagents](#)