

Acetyl Lys proteins Rabbit pAb

CatalogNo: YK0020 Orthogonal Validated 

Key Features

Host Species

- Rabbit

Reactivity

- Human, Mouse, Rat, Monkey, plant

Applications

- WB, IHC, IF, ELISA

MW

- 20,40,80,175kD (Observed)

Isotype

- IgG

Storage

Storage* -15°C to -25°C/1 year (Do not lower than -25°C)

Formulation Liquid in PBS containing 50% glycerol, 0.5% BSA and 0.02% sodium azide.

Recommended Dilution Ratios

WB 1:500-1:2000

IHC 1:100-1:300

IF 1:200-1:1000

ELISA 1:10000

Not yet tested in other applications.

Basic Information

Clonality Polyclonal

Immunogen Information

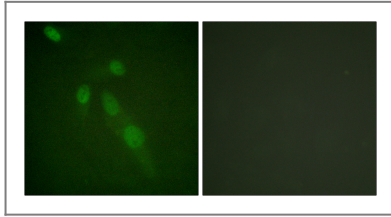
Immunogen Synthesized acetyl-peptide derived from human acetylation Lys proteins.

Specificity Acetyl-Lys proteins Polyclonal Antibody detects endogenous levels of acetylated Lys proteins.

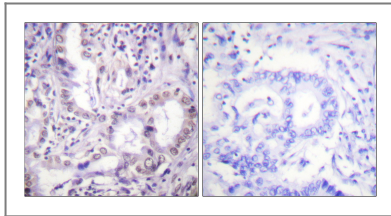
Target Information

Protein Name

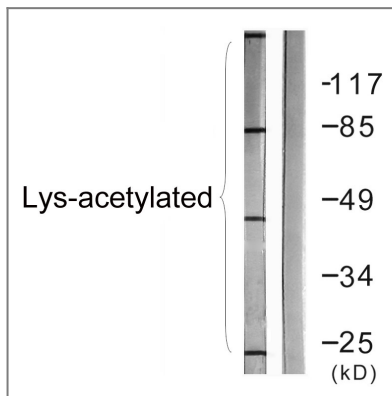
Validation Data



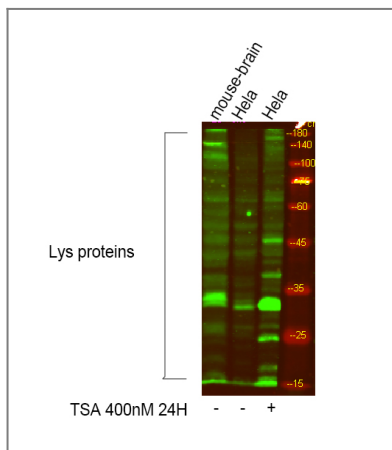
Immunofluorescence analysis of HeLa cells, using Lys-Acetylated Proteins Antibody. The picture on the right is blocked with the synthesized peptide.



Immunohistochemistry analysis of paraffin-embedded human lung carcinoma, using Lys-Acetylated Proteins Antibody. The picture on the right is blocked with the synthesized peptide.



Western blot analysis of lysates from COS7 cells treated with TSA 400uM 24h, using Lys-Acetylated Proteins Antibody. The lane on the right is blocked with the synthesized peptide.



Western blot analysis of lysates from 1) HeLa, 2) mouse brain, (Green) primary antibody was diluted at 1:1000, 4° over night, secondary antibody (cat:RS23920) was diluted at 1:10000, 37° 1hour.

Contact information

Orders: order@immunoway.com
Support: tech@immunoway.com
Telephone: 877-594-3616 (Toll Free), 408-747-0185
Website: http://www.immunoway.com
Address: 2200 Ringwood Ave San Jose, CA 95131 USA



Please scan the QR code
to access additional
product information:
Acetyl Lys proteins
Rabbit pAb

For Research Use Only. Not for Use in Diagnostic Procedures.

[Antibody](#) | [ELISA Kits](#) | [Protein](#) | [Reagents](#)