

Acetyl Histone H1 (Lys25) Rabbit pAb

CatalogNo: YK0001 **Orthogonal Validated** 

Key Features

Host Species

- Rabbit

Reactivity

- Human, Monkey

Applications

- WB, IHC, IF, ELISA

MW

- 20kD (Observed)

Isotype

- IgG

Storage

Storage* -15°C to -25°C/1 year (Do not lower than -25°C)**Formulation** Liquid in PBS containing 50% glycerol, 0.5% BSA and 0.02% sodium azide.

Recommended Dilution Ratios

WB 1:500-1:2000**IHC 1:100-1:300****ELISA 1:20000****IF 1:50-200**

Basic Information

Clonality Polyclonal

Immunogen Information

Immunogen The antiserum was produced against synthesized peptide derived from human Histone H1 around the acetylated site of Lys25. AA range:131-180

Specificity

Acetyl-Histone H1 (K25) Polyclonal Antibody detects endogenous levels of Histone H1 protein only when acetylated at K25. The name of modified sites may be influenced by many factors, such as species (the modified site was not originally found in human samples) and the change of protein sequence (the previous protein sequence is incomplete, and the protein sequence may be prolonged with the development of protein sequencing technology). When naming, we will use the "numbers" in historical reference to keep the sites consistent with the reports. The antibody binds to the following modification sequence (lowercase letters are modification sites):EAKED

Target Information

Gene name H1FOO

Protein Name Histone H1oo

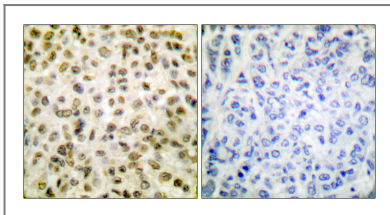
Organism	Gene ID	UniProt ID
Human	132243 ;	Q02539 ; P16403 ; P16402 ; P10412 ; ;
Mouse		Q8VIK3 ;

Cellular Localization Cytoplasm . Nucleus . Chromosome .

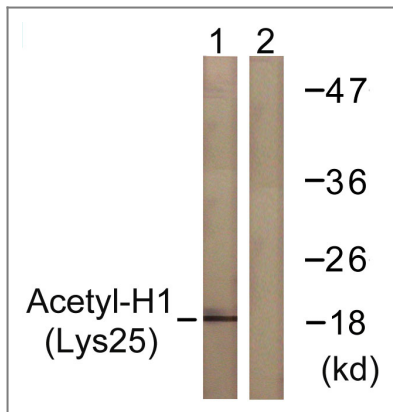
Tissue specificity Oocyte-specific.

Function Function:May play a key role in the control of gene expression during oogenesis and early embryogenesis, presumably through the perturbation of chromatin structure. Essential for meiotic maturation of germinal vesicle-stage oocytes. The somatic type linker histone H1c is rapidly replaced by H1oo in a donor nucleus transplanted into an oocyte. The greater mobility of H1oo as compared to H1c may contribute to this rapid replacement and increased instability of the embryonic chromatin structure. The rapid replacement of H1c with H1oo may play an important role in nuclear remodeling.,similarity:Belongs to the histone H1/H5 family.,tissue specificity:Oocyte-specific.,

Validation Data



Immunohistochemistry analysis of paraffin-embedded human breast carcinoma tissue, using Histone H1 (Acetyl-Lys25) Antibody. The picture on the right is blocked with the synthesized peptide.



Western blot analysis of lysates from COS7 cells, treated with TSA 400nM 24h, using Histone H1 (Acetyl-Lys25) Antibody. The lane on the right is blocked with the synthesized peptide.

Contact information

Orders: order@immunoway.com
Support: tech@immunoway.com
Telephone: 877-594-3616 (Toll Free), 408-747-0185
Website: <http://www.immunoway.com>
Address: 2200 Ringwood Ave San Jose, CA 95131 USA



Please scan the QR code to access additional product information:
Acetyl Histone H1 (Lys25) Rabbit pAb

For Research Use Only. Not for Use in Diagnostic Procedures.

[Antibody](#) | [ELISA Kits](#) | [Protein](#) | [Reagents](#)