

Histone H1 (Di Methyl Lys25) Rabbit pAb

CatalogNo: YH0046

Key Features

Host Species

- Rabbit

Reactivity

- Human, Mouse, Rat

Applications

- WB

MW

- 17-25kD (Observed)

Isotype

- IgG

Storage

Storage* -15°C to -25°C/1 year (Do not lower than -25°C)

Formulation PBS, pH 7.4, containing 0.5% BSA, 0.02% sodium azide as Preservative and 50% Glycerol.

Recommended Dilution Ratios

WB 1:500-1000

Basic Information

Clonality Polyclonal

Immunogen Information

Immunogen Synthetic Peptide of Histone H1 (Di Methyl Lys25)

Specificity The antibody detects endogenous Histone H1 (Di Methyl Lys25) protein.

Target Information

Gene name HIST1H1A/HIST1H1C/HIST1H1D/HIST1H1E

Protein Name Histone H1.1/Histone H1.2/Histone H1.3/Histone H1.4

Organism

Gene ID

UniProt ID

Human [3024](#); [3006](#); [3007](#); [3008](#);

[Q02539](#); [P16403](#); [P16402](#); [P10412](#);

Mouse [80838](#); [50708](#); [14957](#); [50709](#);

Rat [291145](#); [201097](#);

[D4A3K5](#); [P15865](#);

Cellular Localization

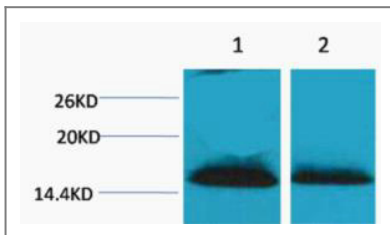
Nucleus . Chromosome . Mainly localizes in euchromatin.

Tissue specificity Placenta,

Function

Function:Histones H1 are necessary for the condensation of nucleosome chains into higher order structures.,similarity:Belongs to the histone H1/H5 family.,

Validation Data



Western blot analysis of 1) Hela, 2) 3T3, diluted at 1:2000. Secondary antibody(catalog#:RS0002) was diluted at 1:20000

Contact information

Orders: order@immunoway.com
Support: tech@immunoway.com
Telephone: 877-594-3616 (Toll Free), 408-747-0185
Website: <http://www.immunoway.com>
Address: 2200 Ringwood Ave San Jose, CA 95131 USA



Please scan the QR code to access additional product information:

Histone H1 (Di Methyl Lys25) Rabbit pAb

For Research Use Only. Not for Use in Diagnostic Procedures.

[Antibody](#) | [ELISA Kits](#) | [Protein](#) | [Reagents](#)