

E-Tag Rabbit pAb

CatalogNo: YG0006

Protein Overexpression 

Key Features

Host Species

- Rabbit

Reactivity

- Species independent

Applications

- WB, ELISA

Isotype

- IgG

Recommended Dilution Ratios

WB 1:1000-5000

ELISA(peptide)1:5000-20000

Storage

Storage* -15°C to -25°C/1 year(Do not lower than -25°C)**Formulation** Liquid in PBS containing 50% glycerol, and 0.02% sodium azide.

Basic Information

Clonality Polyclonal

Immunogen Information

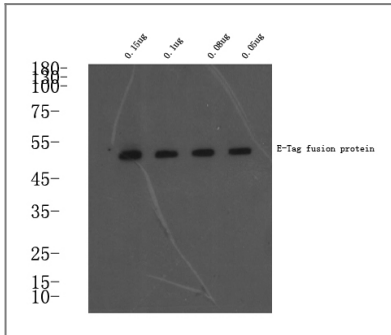
Immunogen Synthetic peptide: GAPVPYPDPLEPR conjugated to KLH.**Specificity** Rabbit polyclonal to E tag

Target Information

Gene name E Tag

Protein Name E Tag

| Validation Data



Western blot analysis of E-Tag fusion protein at 0.05-0.15ug, 4° over night, secondary antibody(cat: RS0002) was diluted at 1:10000, 37° 1hour.

| Contact information

Orders: order@immunoway.com
Support: tech@immunoway.com
Telephone: 877-594-3616 (Toll Free), 408-747-0185
Website: http://www.immunoway.com
Address: 2200 Ringwood Ave San Jose, CA 95131 USA



Please scan the QR code to access additional product information:
E-Tag Rabbit pAb

For Research Use Only. Not for Use in Diagnostic Procedures.

[Antibody](#) | [ELISA Kits](#) | [Protein](#) | [Reagents](#)